




Climatic Bulletin

October 2011

 **Max
temperature**

 **Min
temperature**

 **Mean
temperature**

 **Precipitation**

 **Sunshine
duration**



October was a "cold" month for the whole country. Low temperatures recorded in the middle of the period (snow covered even the tops of Parnitha mountain). Meanwhile, the main characteristic was the long appearance of gale force northern winds over eastern parts. In general, this October has the "label" of an unusually windy month.

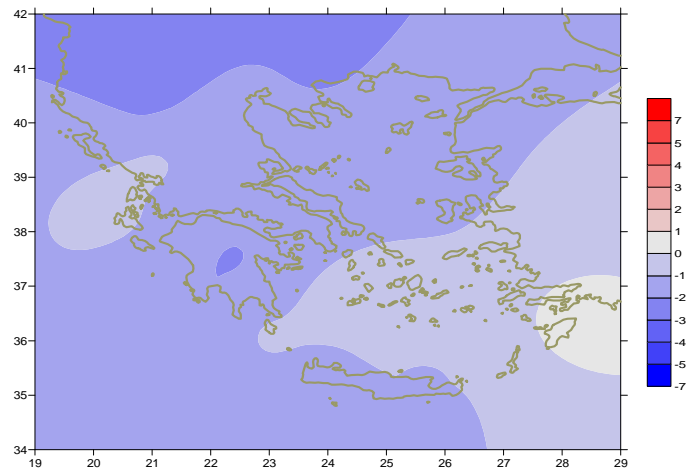


Temperature

First Decameron

Minimum: relatively high values everywhere:
They varied from 5°C to 10°C in northwestern parts
and from 15°C to 29°C in rest parts.

Maximum: High values at the end of the period.
More specific:
 31°C in Lamia, 29.4°C in Iraklion, 26°C in Serres
at 8/10.

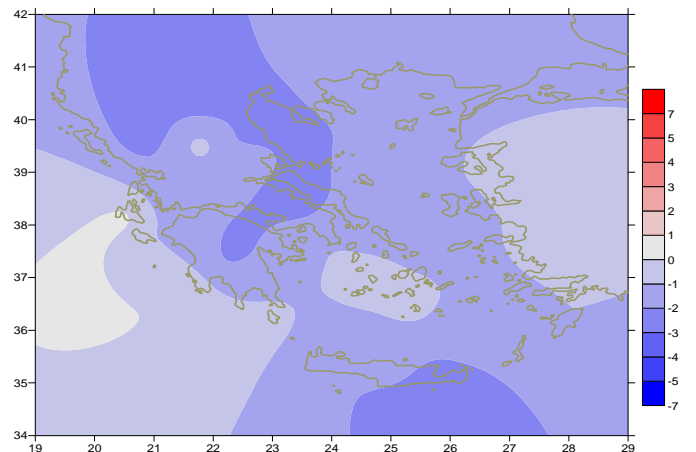


Deviation of mean temperature from normal values

Second Decameron

Minimum: Relatively low values.
E.g (the lowest): -5.6°C in Florina at 18/10, -3°C in Kastoria at 19/10.

Maximum: the values increased at the end.
More specific:
 23°C in Agrinio,
 22.5°C in Argos, 22°C in Larisa at 20/10.

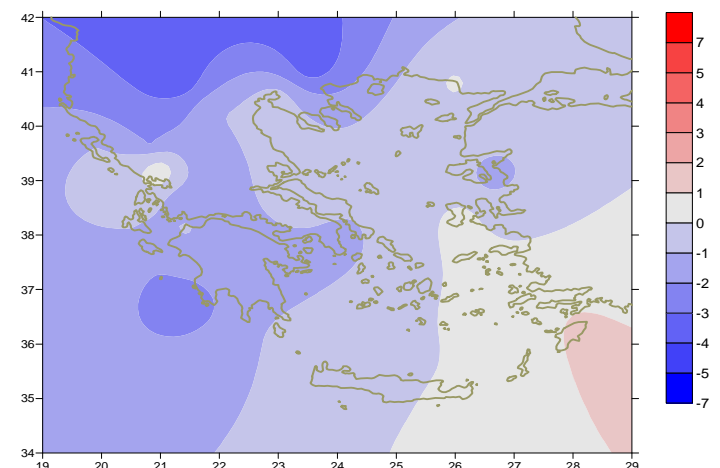


Deviation of maximum temperature from normal values

Third Decameron

Minimum: The values decreased mainly over
Northwestern mainland.
More specific:
 -5.3°C in Florina,
 -2.2°C in Ioannina at 31/10.

Maximum: relatively high values in contrast at the
same date.
For example:
 14.5°C in Florina (31/10),
 16.2°C in Ioannina (31/10),
(from the highest values : 23.4°C in Kalamata at 22/10).



Deviation of minimum temperature from normal values



Precipitation

First Decameron

Locally high precipitation amounts.

More specific:

79mm in Ioannina at 8/10,

50mm in Chios at 9/10,

67mm in Skyros, 54mm in Syros at 10/10.

Second Decameron

Very high precipitation amounts mainly over

West mainland, Ionian islands and Creta.

More specific:

195mm in Andravida, 141mm in Araxos ,

115mm in Argostoli at 15/10 and 67mm in Sitia at 17/10.

Third Decameron

Not remarkable precipitation amounts at network

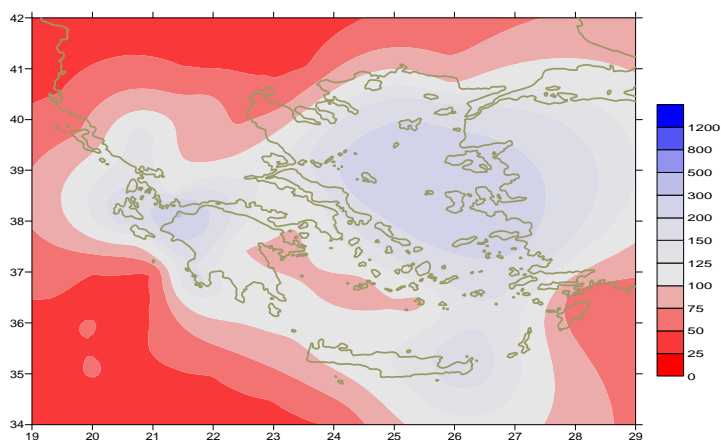
(with exception of NW mainland).

More specific:

15mm in Kerkira at 23/10,

7mm in Ioannina at 23/10,

6mm in Kastoria at 24/10.



*Deviation of monthly precipitation
height from normal values (%)*

TABLE OF MEAN VALUES

STATION	Longitude	Latitude	Tmean	TX	TN	RR	INST
SERRES	23,53	41,07	12,8	19,5	5,4	21	155
FLORINA	21,40	40,78	9,7	16,7	3,1	35	158
KASTORIA	21,27	40,45	11,3	16,9	5	17	174
TRIKALA_IMATHIAS	22,55	40,60					
THESSALONIKI	22,97	40,52	14,9	18,9	10,3	21	184
CHRYSOUPOLI	24,62	40,92	14,2	18,6	9,7	52	193
ALEXANDROUPOLI	25,95	40,85	14	18,3	10,2	43	181
KOZANI	21,83	40,28	11,9	16,5	6,8	46	
KERKYRA	19,92	39,62	17	21,7	12,4	120	211
IOANNINA	20,82	39,70	13,2	18,8	6,4	131	171
PREVEZA	20,76	38,91	18,1	22,5	14,6	108	
TRIKALA_THESSALIAS	21,77	39,52					
LARISA	22,45	39,65	14,5	20	8,9	37	133
LIMNOS	25,23	39,92	15,1	18,1	12,3	76	194
ARTA	21,00	39,17					
AGHIALOS	22,78	39,21	15,2	19,8	11,3	79	152
MYTILINI	26,60	39,05	17,1	21	13,2	92	234
VELO	22,77	37,97	16,7	21	12	77	191
AGRINIO	21,35	38,60	16	22,6	9,4	127	236
LAMIA	22,43	38,87					
ANDRAVIDA	21,28	37,92	16,9	22,4	11,4	273	212
SKYROS	24,48	38,96	16,6	18,8	14,5	99	189
ARGOSTOLI	20,50	38,12	19,1	22,9	15	192	234
ARAXOS	21,42	38,15	17,8	22	13,1	282	238
TANAGRA	23,57	38,33	15,2	19,7	10,9	55	183
HIOS	26,13	38,35	16,8	19,9	13,7	104	238
PYRGOS	21,42	37,67	17,9	23,5	11,6	146	190
TRIPOLI	22,40	37,52	12,3	18,1	6,6	80	184
TATOI	23,78	38,10	15,4	19,2	11,6	32	
HELLINIKO	23,73	37,90	17,8	21,9	13,4	52	196
ELEYSINA	23,55	38,07	17,3	21	13,5	30	
ZAKYNTHOS	20,88	37,75	17,7	22,1	13,8	185	184
SAMOS	26,92	37,68	18,6	22	14,9	67	
ARGOS	22,75	37,63					
KALAMATA	22,02	37,07	16,8	22,8	11,6	124	225
NAXOS	25,37	37,10	18,6	20,4	16,4	61	213
METHONI	21,70	36,82	18,2	23,3	12,9	170	215
MHLOS	24,43	36,73					
SPATA	23,95	37,95	15,2	21,4	11,6	35	
KOS	27,08	36,80	18,9	21,7	16,4	27	
KYTHIRA	22,98	36,15					
SANTORINI	25,41	36,41	18,4	20,8	16,3	27	240
SOUDA	24,12	35,55	17,7	21,1	14,7	96	160
RODOS	28,08	36,40	20,9	23,4	17,9	33	248
MYKONOS	25,35	37,43	17,1	19,4	15,6	97	
HERAKLEIO	25,18	35,33	18,9	21,6	15,9	92	176
IERAPETRA	25,73	35,02					
SITEIA	26,10	35,21	19,1	21,3	16,9	105	205
RETHYMNO	24,50	35,36					
TYMPAKI	24,76	35,06	18,8	22,9	13,4	106	245
KASTELI	25,33	35,18	16,1	19,7	12,8	119	173
KARPATOS	27,15	35,42	20,3	23	18,4	10	
PAROS	25,13	37,02	18	20,7	15,7	64	226
SYROS	24,95	37,42	17,7	20,3	15,8	105	248
IKARIA	26,35	37,68	17,8	19,3	16,3	178	

Climatic Bulletin

General Description

Precipitation amounts were quite higher than normal values over west parts, over the islands eastern Aegean but mainly over Crete. In contrast, they were very lower over northern mainland and Dodecanese. Meanwhile, the mean temperature varied lower than normal values almost everywhere (with exception of southeastern Aegean area).

Climatic Parameters :

- ❖ **Normal Values** : normal values for various parameters (temperature, precipitation, etc) are defined as mean values calculated for 30 years. These normal values are used as basis and represent the mean situation. They can be specified in 10 daily, monthly, seasonally and yearly level and are used for the trend comparison of 10 days, month, season or year as: rainy decameron, mild winter, cool August etc.

Measurement :

- ❖ **Precipitation**
1 mm = 1 litre/m²

Table Legend :

Tmean : Mean Temperature
 TN : Minimum Temperature
 TX : Maximum Temperature
 RR : Precipitation height(mm)
 INST : Sun Duration (hours)

UTC hours (Universal Time Coordinates) in Greece :

- ❖ Winter : UTC hour = local hour - 2
- ❖ Summer : UTC hour = local hour - 3

© Hellenic National Meteorological Service
 Reproduction is prohibited without written authorization
 14 El.Venizelou 16777
 Helliniko, Athens
 Greece