




Climatic Bulletin

March 2012

 **Max
temperature**

 **Min
temperature**

 **Mean
temperature**

 **Precipitation**

 **Sunshine
duration**



March characterized by great variations of temperature values, significant snowfalls over Central and Southern mountains and locally strong rainfalls over west parts. Also the alternation in wind direction was often while the wind force exceeded 8 Beaufort for a long time.



ΕΘΝΙΚΗ
ΜΕΤΕΩΡΟΛΟΓΙΚΗ
ΥΠΗΡΕΣΙΑ

HELLENIC NATIONAL METEOROLOGICAL SERVICE



Temperature

First Decameron

Minimum: the lowest values over Central and Northern mainland.

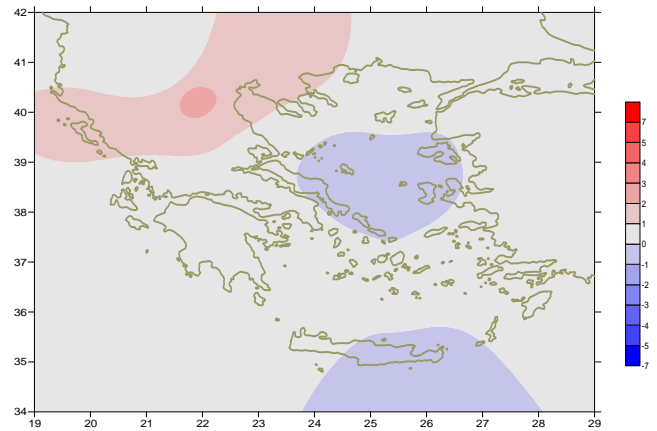
More specific:

-8°C in Florina and -4°C in Larisa at 2/3.

Maximum: high values mainly between 8/3 and 9/3.

More specific:

22.8°C in Sitia , 22.4°C in Kalamata ,
 1.9°C in Elefsina at 9/3.



Deviation of mean temperature from normal values

Second Decameron

Minimum: low values over mainland in the middle of the period.

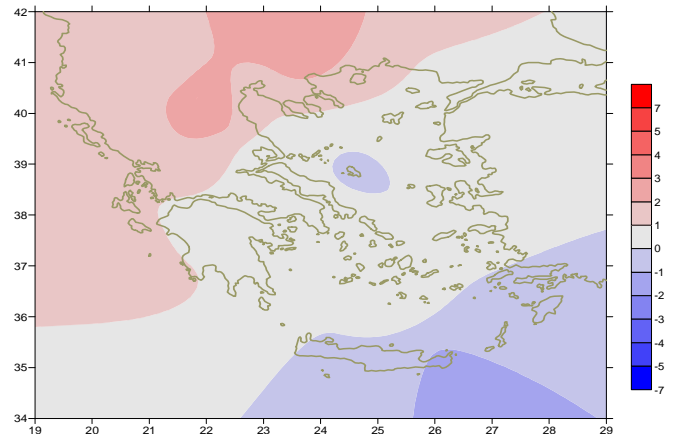
More specific:

-2.2°C in Tripoli, -0.4°C in Agrinio and 0.2°C in Thessaloniki at 14/3.

Maximum: low values in the middle rising rapidly at the end.

More specific:

25.8°C in Serres,
 24.4°C in Konitsa and
 23.5°C in Edessa at 20/3.



Deviation of maximum temperature from normal values

Third Decameron

Minimum: temporal rising and declining values.

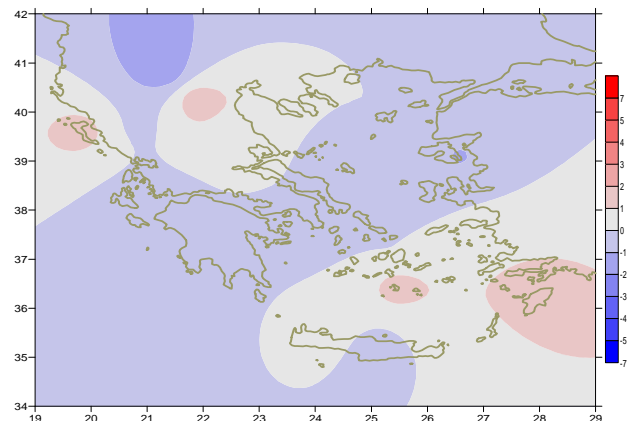
More specific (from the lowest) :

0.8°C in Tripoli, 3.7°C in Spata at 24/3,
 3.4°C in Argos and 3.8°C in Desfina at 32/3.

Maximum: very high values between 21-24/3.

For example:

25°C in Serres ,
 23.4°C in Agrinio,
 23.3°C in Lamia at 24/3.



Deviation of minimum temperature from normal values



P r e c i p i t a t i o n

First Decameron

Significant rainfalls mainly over west mainland.

More specific:

37mm in Preveza at 5/3,

28mm in Konitsa at 8/3,

95mm in Arta and 95mm in Preveza at 9/3.

Second Decameron

Remarkable rainfalls over Creta and most of islands of Aegean. Also, significant snowfalls over mountains of Peloponnese and central mainland.

More specific:

24mm in Samos at 12/3, 54mm in Souda at 13/3,

40mm in Santorini at 13/3, 35mm in Kastelli (Crete) at 13/3.

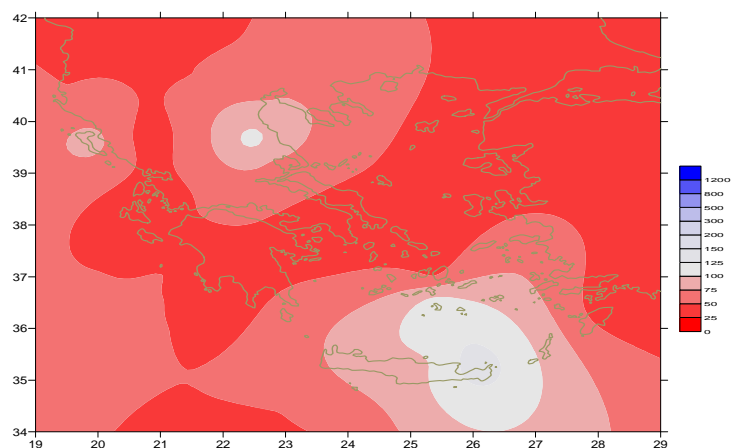
Third Decameron

Local rainfalls over Central mainland.

More specific:

6mm in Agrinio at 25/3, 4mm in Tripoli at 25/3,

4mm in Alexandroupoli at 26/3 and at 30/3.



Deviation of monthly precipitation height from normal values (%)

TABLE OF MEAN VALUES

STATION	Longitude	Latitude	Tmean	TX	TN	RR	INST
SERRES	23,53	41,07	11,5	17,7	4,3	23	178
FLORINA	21,40	40,78	6,7	13,2	-0,7	27	198
KASTORIA	21,27	40,45	9	14,5	1,5	39	204
TRIKALA_IMATHIAS	22,55	40,60					
THESSALONIKI	22,97	40,52	11	15,3	5,1	34	189
CHRYSOUPOLI	24,62	40,92	9,1	13,2	4,7	22	188
ALEXANDROUPOLI	25,95	40,85	8,6	13,1	3,4	23	201
KOZANI	21,83	40,28	9,7	14,6	3,8	29	
KERKYRA	19,92	39,62	13,5	17,7	8,3	85	218
IOANNINA	20,82	39,70	10,3	16,2	2,9	37	171
PREVEZA	20,76	38,91	13,1	16,8	8,9	151	
TRIKALA_THESSALIAS	21,77	39,52					
LARISA	22,45	39,65	10,7	16,8	3,8	40	189
LIMNOS	25,23	39,92	10,2	13,6	6,2	23	218
ARTA	21,00	39,17					
AGHIALOS	22,78	39,21	10,6	15	5,5	38	199
MYTILINI	26,60	39,05	11,8	15,4	7,1	21	221
VELO	22,77	37,97					
AGRINIO	21,35	38,60	12,1	18,5	5,5	36	216
LAMIA	22,43	38,87					
ANDRAVIDA	21,28	37,92	12,4	17	6,9	27	218
SKYROS	24,48	38,96	11	13,8	8	24	184
ARGOSTOLI	20,50	38,12	13,3	17,1	9	26	238
ARAXOS	21,42	38,15	12,8	16,8	7	29	232
TANAGRA	23,57	38,33	10,4	15,7	4,4	22	206
HIOS	26,13	38,35	11,6	15	6,9	28	229
PYRGOS	21,42	37,67	13,6	18,4	7,4	16	186
TRIPOLI	22,40	37,52					
TATOI	23,78	38,10	10,8	15	5,5	20	
HELLINIKO	23,73	37,90	12,7	16,7	7,7	13	194
ELEYSINA	23,55	38,07	12,6	17,2	7,3	8	
ZAKYNTHOS	20,88	37,75	13	17,4	8,2	36	229
SAMOS	26,92	37,68	12,5	16	8,3	60	
ARGOS	22,75	37,63					
KALAMATA	22,02	37,07	12,4	17,9	6,5	32	230
NAXOS	25,37	37,10	13,4	15,9	10,3	20	251
METHONI	21,70	36,82	13,9	17,3	8,4	22	251
MHLOS	24,43	36,73					
SPATA	23,95	37,95	12	15,4	5,2	18	
KOS	27,08	36,80	13	15,5	9,9	75	
KYTHIRA	22,98	36,15					
SANTORINI	25,41	36,41	13,8	16	11,6	74	256
SOUDA	24,12	35,55	12,9	16,5	9,1	75	222
RODOS	28,08	36,40	14,3	16,5	11,3	27	261
MYKONOS	25,35	37,43	12,2	14,4	10,6	36	
HERAKLEIO	25,18	35,33	13,3	16,5	9,3	54	228
IERAPETRA	25,73	35,02					
SITEIA	26,10	35,21	13,3	15,9	10,6	78	250
RETHYMNO	24,50	35,36					
TYMPAKI	24,76	35,06	13,4	17,7	6,4	36	265
KASTELI	25,33	35,18	10,5	14,8	5,4	71	207
KARPATOS	27,15	35,42	14,4	16,7	12,2	17	
PAROS	25,13	37,02	13	16	10	19	244
SYROS	24,95	37,42	12,9	15,8	10,2	13	253
IKARIA	26,35	37,68	13,5	15	12	24	

TABLE OF DEVIATIONS
FROM NORMAL VALUES

STATION	TMEAN (deviation) (I)	PRECI (deviation %) (II)
SERRES	1.8	69.0
FLORINA	0	44.0
THESSALONIKI	1.4	74.0
ALEXANDROUPOLI	0.1	44.0
KOZANI	2.7	69.0
KERKYRA	1.4	86.4
IOANNINA	1.4	37.7
LARISA	12	110.2
LIMNOS	0.3	44.6
AGHIALOS	0.6	72.7
MYTILINI	0	28.0
AGRINIO	0.4	46.2
SKYROS	-0.7	46.7
ARGOSTOLI	0.2	31.3
ARAXOS	0.5	48.7
HIOS	-0.2	38.1
HELLINIKO	0.3	29.3
ZAKYNTHOS	0.1	40.2
SAMOS	0.3	69.8
KALAMATA	0	44.4
NAXOS	0.1	40.2
METHONI	0.9	33.4
SANTORINI	1.1	123.3
SOUDA	0.3	92.9
RODOS	0.7	35.9
HERAKLIO	-0.3	94.1
SITIA	-0.5	138.5

(I) deviation of mean temperature from normal values

(II) deviation of monthly precipitation height from normal values %.

Climatic Bulletin

General Description

Precipitation amounts were very lower than normal values everywhere with exception of Hesperous, eastern Creta and parts of southern Aegean sea.
The mean temperature varied higher than normal values over Greek mainland and islands.

Climatic Parameters :

- ❖ **Normal Values** : normal values for various parameters (temperature, precipitation, etc) are defined as mean values calculated for 30 years. These normal values are used as basis and represent the mean situation. They can be specified in 10 daily, monthly, seasonally and yearly level and are used for the trend comparison of 10 days, month, season or year as: rainy decameron, mild winter, cool August etc.

Measurement :

- ❖ **Precipitation**
1 mm = 1 litre/m²

Table Legend :

Tmean : Mean Temperature
TN : Minimum Temperature
TX : Maximum Temperature
RR : Precipitation height(mm)
INST : Sun Duration (hours)

UTC hours (Universal Time Coordinates) in Greece :

- ❖ Winter : UTC hour = local hour - 2
- ❖ Summer : UTC hour = local hour - 3

© Hellenic National Meteorological Service
Reproduction is prohibited without written authorization
14 El.Venizelou 16777
Helliniko, Athens
Greece