




# Climatic Bulletin

April 2012

 **Max  
temperature**

 **Min  
temperature**

 **Mean  
temperature**

 **Precipitation**

 **Sunshine  
duration**



April characterized by variations of temperature values, with two cold days (10-11/4) and two hot ones (29-30 /4).

Meanwhile significant snowfalls recorded over mountains of mainland during the above cold period.

Also locally strong rainfalls and thunderstorms recorded . South winds, with force which exceeded 8 Beaufort, affected the whole country.



ΕΘΝΙΚΗ  
**ΜΕΤΕΩΡΟΛΟΓΙΚΗ**  
ΥΠΗΡΕΣΙΑ

HELLENIC NATIONAL METEOROLOGICAL SERVICE



# Temperature

## First Decameron

**Minimum:** the lowest values at the end of the period.

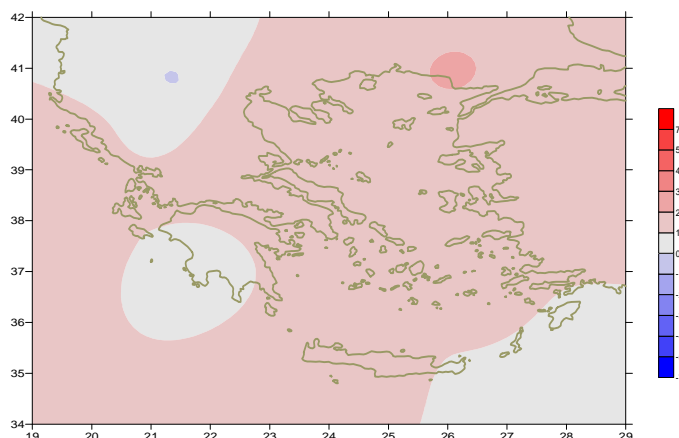
More specific:

$-0.1^{\circ}\text{C}$  in Florina ,  $0.3^{\circ}\text{C}$  in Kozani ,  
 $0.1^{\circ}\text{C}$  in Tripoli ,  $5^{\circ}\text{C}$  in Kalamata at 10/4.

**Maximum:** high values in the middle of the period.

More specific:

$28^{\circ}\text{C}$  in Souda ,  $27.2^{\circ}\text{C}$  in N.Filadelfia ,  
 $26.2^{\circ}\text{C}$  in Lamia at 7/4.



*Deviation of mean temperature from normal values*

## Second Decameron

**Minimum:** low values at 11/4, rising rapidly from 12/4.

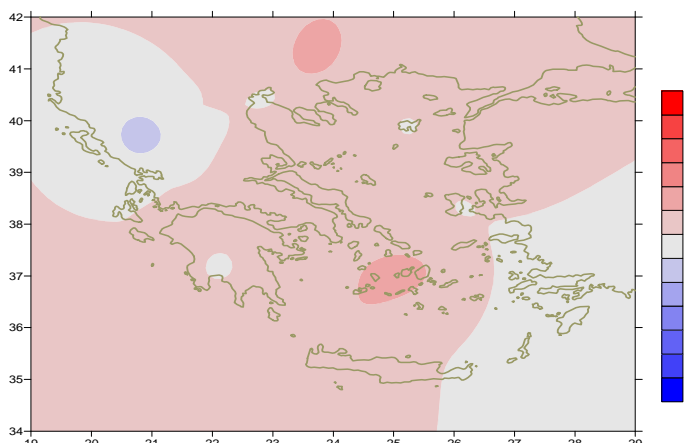
More specific:

$-1.6^{\circ}\text{C}$  in Tripoli ,  $-0.2^{\circ}\text{C}$  in Argos and  $0.6^{\circ}\text{C}$  in Larissa at 11/4.

**Maximum:** low values rising gradually until the end.

More specific:

$13.2^{\circ}\text{C}$  in Skyros ( 11/ 4) and,  $20.2^{\circ}\text{C}$  ( 20/4)  
 $14.2^{\circ}\text{C}$  in Mykonos ( 11/ 4) and  $20.2^{\circ}\text{C}$  ( 20/4).



*Deviation of maximum temperature from normal values*

## Third Decameron

**Minimum:** high values during last two days.

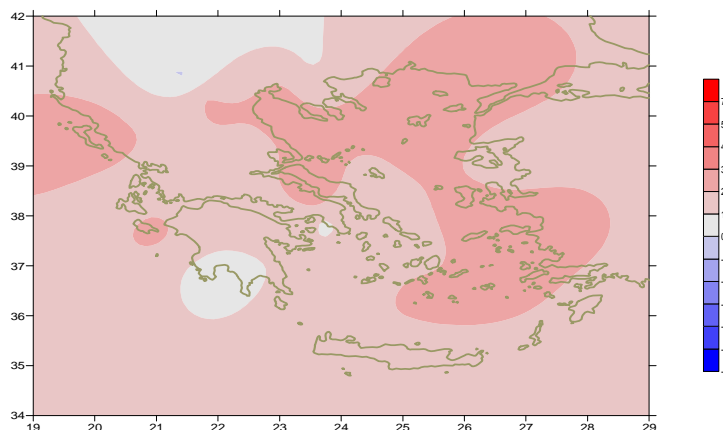
More specific :

$18.6^{\circ}\text{C}$  in Alexandroupoli ,  $18^{\circ}\text{C}$  in Argostoli at 29/4,  
and  $21^{\circ}\text{C}$  in Elefsina at 30/4.

**Maximum:** very high values between 25-30/4.

For example:

$31.6^{\circ}\text{C}$  in Iraklion at 25/4 ,  
 $31.8^{\circ}\text{C}$  in Serres at 29/4,  
 $32^{\circ}\text{C}$  in Agrinio ,  $30.4^{\circ}\text{C}$  in Hellinikon at 30/4.



*Deviation of minimum temperature from normal values*



## P r e c i p i t a t i o n

### First Decameron

Significant rainfalls over most parts and snowfalls mountains of mainland

During last two days.

More specific:

*29mm in Preveza at 9/4,*

*29mm in Tanagra at 9/4,*

*26mm in Mytilini and 49mm in Samos at 10/4.*

### Second Decameron

Strong rainfalls and thunderstorms temporarily from 14/4 to 18/4

over Ionian sea, mainland and islands of Eastern Aegean.

More specific:

*24mm in Samos , 45mm in Mytilini,*

*25mm in Kerkira, 29mm in Serres at 14/4.*

### Third Decameron

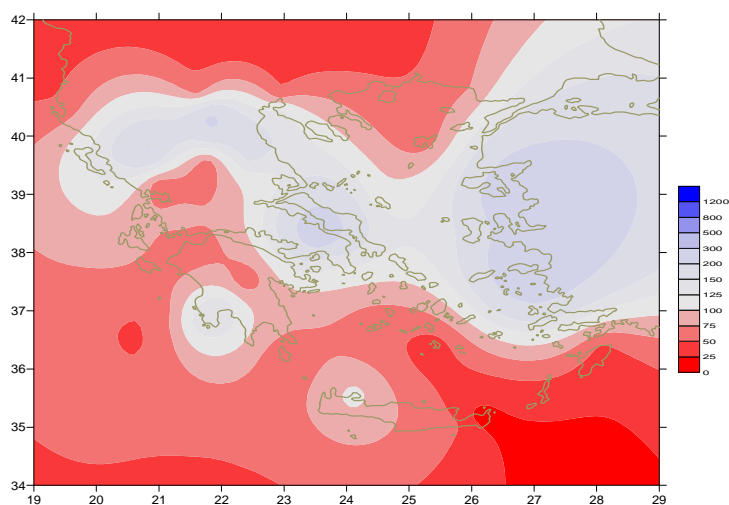
Few local rainfalls and thunderstorms temporarily over

western mainland ,Thrace and Eastern Aegean.

More specific:

*6mm in Ioannina, 8mm in Konitsa at 21/4,*

*6mm in Serres at 28/4.*



*Deviation of monthly precipitation  
height from normal values (%)*

TABLE OF MEAN VALUES

STATION	Longitude	Lattitude	Tmean	TX	TN	RR	INST
SERRES	23,53	41,07	15,7	22	8,7	18	113
FLORINA	21,40	40,78	12,3	18	5	77	176
KASTORIA	21,27	40,45	12,5	17,6	5,6	91	183
TRIKALA_IMATHIAS	22,55	40,60					
THESSALONIKI	22,97	40,52	16	20,1	9,5	44	204
CHRYSOUPOLI	24,62	40,92	15,2	19,1	10,2	35	227
ALEXANDROUPOLI	25,95	40,85	15,3	18,8	9,7	29	256
KOZANI	21,83	40,28	12,7	17,7	7,5	90	
KERKYRA	19,92	39,62	16,6	20	12,1	82	201
IOANNINA	20,82	39,70	13,3	17,6	7,9	158	152
PREVEZA	20,76	38,91	16,2	19,5	12,1	104	
TRIKALA_THESSALIAS	21,77	39,52					
LARISA	22,45	39,65	15,6	21,1	8,2	47	224
LIMNOS	25,23	39,92	15,4	18,2	11,6	19	252
ARTA	21,00	39,17					
AGHIALOS	22,78	39,21	16,1	20,6	9,6	38	220
MYTILINI	26,60	39,05	17,4	21	12,8	126	262
VELO	22,77	37,97					
AGRINIO	21,35	38,60	16,4	21,7	9,7	51	228
LAMIA	22,43	38,87					
ANDRAVIDA	21,28	37,92	16,4	20,3	10,8	41	230
SKYROS	24,48	38,96	16,4	19,4	13,4	25	230
ARGOSTOLI	20,50	38,12	16,6	19,3	12,8	55	244
ARAXOS	21,42	38,15					
TANAGRA	23,57	38,33	16,4	20,7	9,6	77	242
HIOS	26,13	38,35	16,8	19,6	12,3	70	253
PYRGOS	21,42	37,67	17,1	21,2	11	65	132
TRIPOLI	22,40	37,52					
TATOI	23,78	38,10	16,4	20,6	9,3	40	
HELLINIKO	23,73	37,90	17,6	21,1	12,6	35	256
ELEYSINA	23,55	38,07	17,6	21,6	11,4	31	
ZAKYNTHOS	20,88	37,75	16,5	20,4	13,6	32	242
SAMOS	26,92	37,68	17,6	20,7	13,4	95	
ARGOS	22,75	37,63					
KALAMATA	22,02	37,07	15,8	20,9	9,8	70	257
NAXOS	25,37	37,10	17,6	20,8	14,2	16	291
METHONI	21,70	36,82	16,3	20	12,1	48	275
MHLOS	24,43	36,73					
SPATA	23,95	37,95	15,6	19,9	10,2	31	
KOS	27,08	36,80	16,7	19,6	13,9	56	
KYTHIRA	22,98	36,15					
SANTORINI	25,41	36,41	17,6	20	15	7	260
SOUDA	24,12	35,55	17,6	22	13,1	35	288
RODOS	28,08	36,40	17,6	20,4	14,3	11	280
MYKONOS	25,35	37,43	16,4	18,8	14,6	24	
HERAKLEIO	25,18	35,33	17,9	21,7	13,4	19	287
IERAPETRA	25,73	35,02					
SITEIA	26,10	35,21	17,7	21,1	14,2	5	293
RETHYMNO	24,50	35,36					
TYMPAKI	24,76	35,06	17,5	21,1	10,5	17	287
KASTELI	25,33	35,18	16,2	20,9	10,3	17	264
KARPATHOS	27,15	35,42	17,5	20,1	15,4	8	
PAROS	25,13	37,02	17,3	20,4	14,1	22	271
SYROS	24,95	37,42	17,1	20,7	13,9	22	284
IKARIA	26,35	37,68	17,3	19,1	15,7	47	

TABLE OF DEVIATIONS  
FROM NORMAL VALUES

STATION	TMEAN ( deviation ) (I)	PRECI ( deviation % ) (II)
SERRES	1.4	51
FLORINA	-0.1	140
THESSALONIKI	1.8	122
ALEXANDROUPOLI	2.1	73
KOZANI	0.8	223
KERKYRA	1.5	133
IOANNINA	0.7	208
LARISA	1.6	163
LIMNOS	1.6	59
AGHIALOS	1.9	110
MYTILINI	1.6	269
AGRINIO	1.2	91
SKYROS	1.2	114
ARGOSTOLI	1.2	92
ARAXOS		
HIOS	1.5	170
HELLINIKO	1.6	141
ZAKYNTHOS	1	63
SAMOS	1.5	299
KALAMATA	0.4	147
NAXOS	1.5	87
METHONI	0.8	151
SANTORINI	2	37
SOUDA	1.8	110
RODOS	0.9	46
HERAKLIO	1.3	63
SITIA	0.9	18

(I) deviation of mean temperature from normal values

(II) deviation of monthly precipitation height from normal values %.

# Climatic Bulletin

## General Description

Precipitation amounts were very higher than normal values with exception of Creta and parts of southern Aegean area. The mean temperature varied higher than normal values mainly over eastern and southern Greece.

### Climatic Parameters :

- ❖ **Normal Values** : normal values for various parameters (temperature, precipitation, etc) are defined as mean values calculated for 30 years. These normal values are used as basis and represent the mean situation. They can be specified in 10 daily, monthly, seasonally and yearly level and are used for the trend comparison of 10 days, month, season or year as: rainy decameron, mild winter, cool August etc.

### Measurement :

- ❖ **Precipitation**  
1 mm = 1 litre/m<sup>2</sup>

### Table Legend :

Tmean : Mean Temperature  
 TN : Minimum Temperature  
 TX : Maximum Temperature  
 RR : Precipitation height(mm)  
 INST : Sun Duration (hours)

### UTC hours (Universal Time Coordinates) in Greece :

- ❖ Winter : UTC hour = local hour - 2
- ❖ Summer : UTC hour = local hour - 3

© Hellenic National Meteorological Service  
 Reproduction is prohibited without written authorization  
 14 El.Venizelou 16777  
 Helliniko, Athens  
 Greece