




Climatic Bulletin

December 2012

 **Max
temperature**

 **Min
temperature**

 **Mean
temperature**

 **Precipitation**

 **Sunshine
duration**



December started with very high values of temperature which declined soon
So between 9/12 and 15/12 very low values and significant snowfalls recorded over northern mainland, mainly over West Macedonia..
Meanwhile strong rainfalls and thunderstorms caused severe floods locally over west parts, eastern Thessaly, eastern Sterea-Evia and over greater area of Aegean sea..



ΕΘΝΙΚΗ
ΜΕΤΕΩΡΟΛΟΓΙΚΗ
ΥΠΗΡΕΣΙΑ

HELLENIC NATIONAL METEOROLOGICAL SERVICE



Temperature

First Decameron

Minimum: declining values from 4/12, low ones at the end.

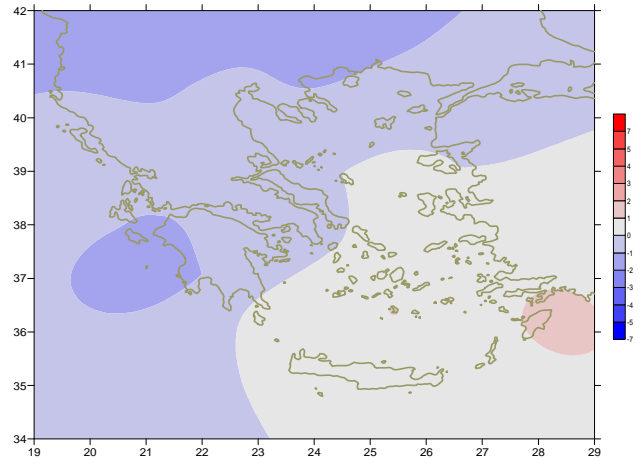
More specific (varied) :

-1.4°C in Thessaloniki, -1.9°C in Tripoli (8/12) and -8.4°C in Florina, -4.6°C in Kozani (10/12).

Maximum: values which declined rapidly from 5/12, mainly over Aegean area.

More specific:

24.6°C in Sitia (2/12) and 14.3°C (10/12), 18.2°C in Alexandroupoli (1/12) and 6.6°C (10/12),



Deviation of mean temperature from normal values

Second Decameron

Minimum: very low values over NW mainland, which rose in the middle of month.

More specific :

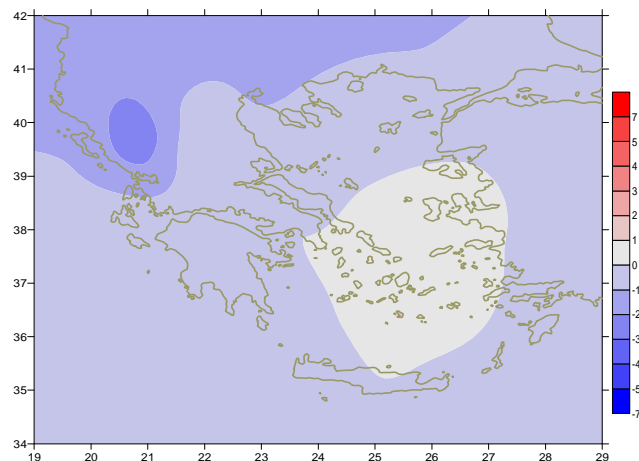
-18°C in Florina, -14°C in Kastoria and -6.7°C in Konitsa at 13/12.

Maximum: More specific (varied):

from -4.4°C to 10°C over north mainland,

from 7°C to 14°C over rest mainland,

from 11°C to 19°C over islands.



Deviation of maximum temperature from normal values

Third Decameron

Minimum: very high values at the end.

More specific (varied) :

from -5°C to 8°C over north mainland,

from -3°C to 12°C over rest mainland,

from 2°C to 15°C over islands.

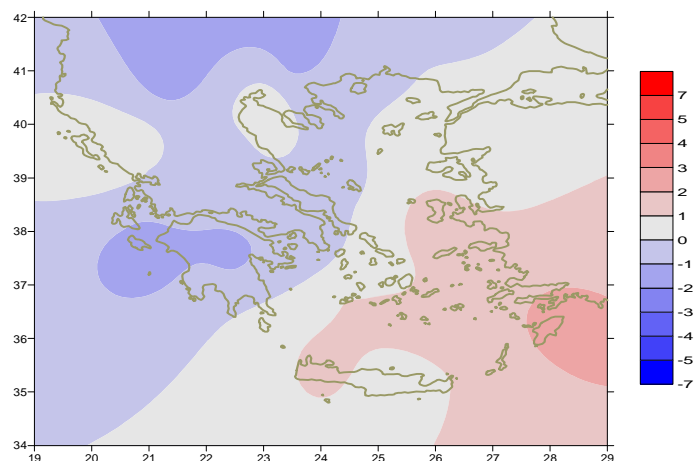
Maximum: high values at the end (29-30/12).

More specific (varied) :

from 3°C to 12°C over north mainland,

from 7°C to 16°C over rest mainland,

from 9°C to 19°C over islands.



Deviation of minimum temperature from normal values



Precipitation

First Decameron

Local rainfalls and thunderstorms , mainly from 8/12 to 10/12.

More specific:

*33mm in Mytilini (1/12), 24mm (3/12), 29mm (6/12),
64mm in Kerkyra (8/12), 39mm in Alexandroupoli (9/12), 35mm in Samos (10/12),*

Second Decameron

Strong rainfalls and thunderstorms between 17-19/12.

More specific:

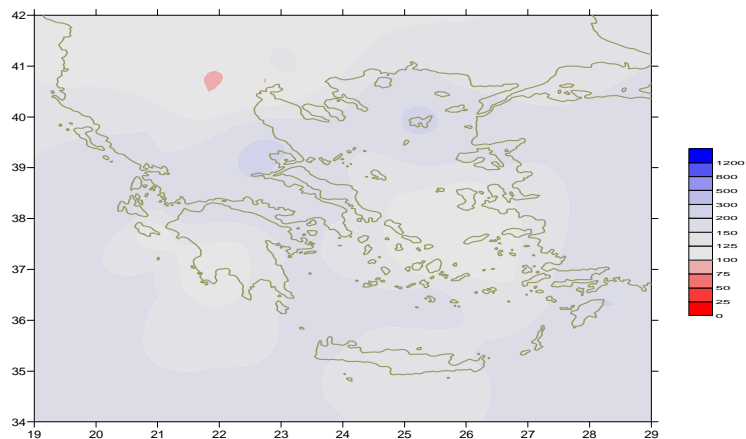
*33mm in Larisa, 30mm in Karistos, 30mm in Syros,
and 30mm in SpataL at 18/12,
44mm in Argostoli at 19/12.*

Third Decameron

Locally strong rainfalls and thunderstorms at 23/12 and mainly
at 29,30/12.

More specific:

*50mm in Rodos, 38mm in Kastelli (Creta) at 23/12,
60mm in Aghialos, 50mm in Skyros at 29/12,
107mm in Rodos, 90mm in Tatoi, 74mm in Elefsina,
and 49mm in Spata at 30/12.*



***Deviation of monthly precipitation
height from normal values (%)***

TABLE OF MEAN VALUES

STATION	Longitude	Latitude	Tmean	TX	TN	RR	INST
SERRES	23,53	41,07	3,2	8	-0,4	24	95
FLORINA	21,40	40,78	0,2	4,9	-3,6	81	
KASTORIA	21,27	40,45	2,3	7	1,6	109	92
TRIKALA_IMATHIAS	22,55	40,60					
THESSALONIKI	22,97	40,52	6,3	9,7	3,3	50	105
CHRYSOUPOLI	24,62	40,92	6,8	10,1	3,9	76	91
ALEXANDROUPOLI	25,95	40,85	6,2	9,8	3,4	116	70
KOZANI	21,83	40,28	3,2	7,3	-0,2	40	
KERKYRA	19,92	39,62	10,6	14,2	7,5	244	75
IOANNINA	20,82	39,70	5,3	8,6	2,2	239	59
PREVEZA	20,76	38,91	9,9	13	7,2	261	
TRIKALA_THESSALIAS	21,77	39,52					
LARISA	22,45	39,65	5,7	10,5	1,6	85	106
LIMNOS	25,23	39,92	9	12,1	6,3	178	92
ARTA	21,00	39,17					
AGHIALOS	22,78	39,21	7,7	12,2	4,3	163	125
MYTILINI	26,60	39,05	11,3	13,9	8,7	186	97
VELO	22,77	37,97					
AGRINIO	21,35	38,60					
LAMIA	22,43	38,87					
ANDRAVIDA	21,28	37,92	10,4	14,9	7,2	197	119
SKYROS	24,48	38,96					
ARGOSTOLI	20,50	38,12	12,1	15,4	9,2	201	123
ARAXOS	21,42	38,15	10,5	14,7	6,7	205	132
TANAGRA	23,57	38,33	8,7	13,3	4,9	144	115
HIOS	26,13	38,35	11,9	14,6	9,3	107	106
PYRGOS	21,42	37,67					
TRIPOLI	22,40	37,52	6,1	11	1,4	163	108
TATOI	23,78	38,10	8,7	13,4	5,1	169	
HELLINIKO	23,73	37,90	11,5	15,2	8	99	91
ELEYSINA	23,55	38,07	10,6	14,5	7,1	127	
ZAKYNTHOS	20,88	37,75	11,3	15,4	7,7	154	105
SAMOS	26,92	37,68	12,3	15,1	9,9	174	
ARGOS	22,75	37,63					
KALAMATA	22,02	37,07	10,6	16,5	6,7	122	132
NAXOS	25,37	37,10	13,8	16,1	11,6	68	108
METHONI	21,70	36,82					
MHLOS	24,43	36,73					
SPATA	23,95	37,95	10,8	14,8	6,6	105	
KOS	27,08	36,80	13	15	11,2	248	
KYTHIRA	22,98	36,15					
SANTORINI	25,41	36,41	13,9	16,1	11,6	97	138
SOUDA	24,12	35,55	12,9	15,6	10,6	123	97
RODOS	28,08	36,40	14,6	16,3	12,7	290	108
MYKONOS	25,35	37,43	12,5	14,5	10,7	65	
HERAKLEIO	25,18	35,33	13,9	17,1	11,4	83	95
IERAPETRA	25,73	35,02					
SITEIA	26,10	35,21	14,1	16,9	12	120	112
RETHYMNO	24,50	35,36					
TYMPAKI	24,76	35,06					
KASTELI	25,33	35,18	11,2	14,5	8	108	
KARPATHOS	27,15	35,42	15,3	17	14	25	
PAROS	25,13	37,02					
SYROS	24,95	37,42	13	15,4	10,8	92	170
IKARIA	26,35	37,68					

**TABLE OF DEVIATIONS
FROM NORMAL VALUES**

STATION	TMEAN (deviation) (I)	PRECI (deviation %) (II)
SERRES	-1.7	76
FLORINA	-1.8	95
THESSALONIKI	-0.4	99
ALEXANDROUPOLI	-0.8	133
KOZANI	-0.4	76
KERKYRA	-0.5	135
IOANNINA	-0.5	139
LARISA	-0.6	163
LIMNOS	-0.3	223
AGHIALOS	-0.3	255
MYTILINI	0	128
AGRINIO		
SKYROS		
ARGOSTOLI	-0.8	161
ARAXOS	-1	156
HIOS	0.8	98
HELLINIKO	-0.5	150
ZAKYNTHOS	-1.5	95
SAMOS	0.2	106
KALAMATA	-1	91
NAXOS	0.1	101
METHONI		
SANTORINI	1.1	159
SOUDA	0.3	131
RODOS	1.2	200
HERAKLIO	0.1	108
SITIA	0.1	135

(I) deviation of mean temperature from normal values
 (II) deviation of monthly precipitation height from normal values %.

Climatic Bulletin

General Description

Precipitation amounts were higher than normal values almost everywhere. Meanwhile, they were higher enough over west parts, east Thessaly, east Sterea- Evia and over Aegean area. The mean temperature varied lower than normal values over most parts with exception of southeastern islands where it was slightly higher.

Climatic Parameters :

- ❖ **Normal Values** : normal values for various parameters (temperature, precipitation, etc) are defined as mean values calculated for 30 years. These normal values are used as basis and represent the mean situation. They can be specified in 10 daily, monthly, seasonally and yearly level and are used for the trend comparison of 10 days, month, season or year as: rainy decameron, mild winter, cool August etc.

Measurement :

- ❖ **Precipitation**
1 mm = 1 litre/m²

Table Legend :

Tmean : Mean Temperature
 TN : Minimum Temperature
 TX : Maximum Temperature
 RR : Precipitation height(mm)
 INST : Sun Duration (hours)

UTC hours (Universal Time Coordinates) in Greece :

- ❖ Winter : UTC hour = local hour - 2
- ❖ Summer : UTC hour = local hour - 3

© Hellenic National Meteorological Service
 Reproduction is prohibited without written authorization
 14 El.Venizelou 16777
 Helliniko, Athens
 Greece