



Climatic Bulletin

February 2013

 **Max
temperature**

 **Min
temperature**

 **Mean
temperature**

 **Precipitation**

 **Sunshine
duration**



The main characteristics of February were the strong rainfalls and thunderstorms, the heavy snowfalls over mountains of mainland and the prevalence of gale force winds for half of the period.

Meanwhile very strong thunderstorms affected Attica on Monday 22/2, from early morning till noon.

That event recorded as an extreme one due to its strength and duration.



ΕΘΝΙΚΗ
ΜΕΤΕΩΡΟΛΟΓΙΚΗ
ΥΠΗΡΕΣΙΑ

HELLENIC NATIONAL METEOROLOGICAL SERVICE



Temperature

First Decameron

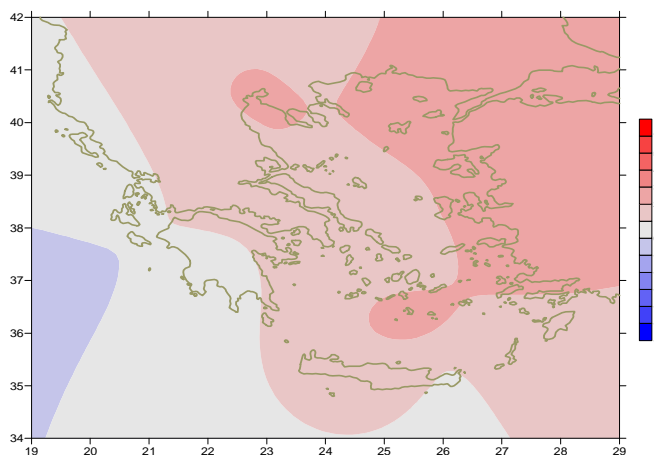
Minimum: low values in the beginning.
 More specific (the lowest) :
 -6°C in Florina, -2.6°C in Kastoria and
 -3°C in Kozani at 1/2.
Maximum: low values mainly at the end.
 More specific (the lowest):
 8.5°C in Florina (1/2) and 2.3°C (8/2).
 6.4°C in Kastoria (8/2).

Second Decameron

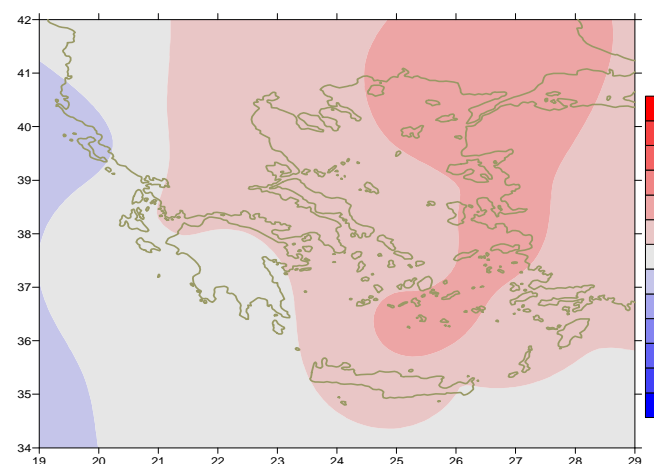
Minimum: high values in the middle of month.
 More specific :
 12.8°C in Hellinikon, 12.4°C in Paros and
 12°C in Zakynthos at 13/2.
Maximum:
 More specific (the highest):
 17.6 in Iraklion, 16.9°C in Santorini,
 16.4°C in Kalamata, 15.4°C in Chios at 13/2.

Third Decameron

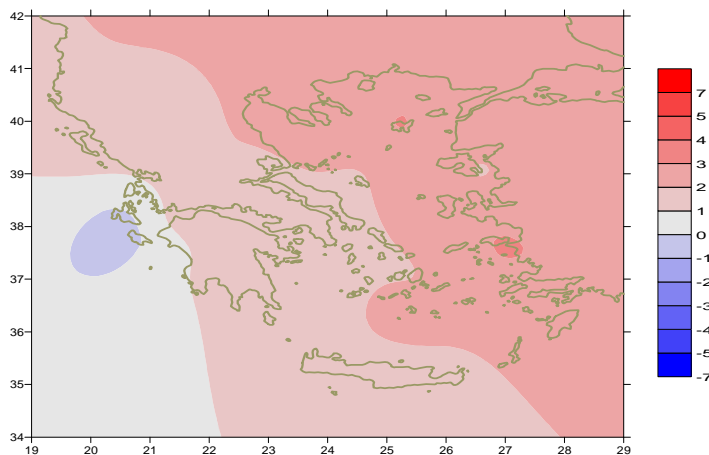
Minimum: high in the middle of the period.
 More specific (from the highest) :
 13.2°C in Kythira,
 14.4°C in Kerkyra and 15°C in Karpathos at 24/2.
Maximum: very high values at the same day.
 More specific :
 24°C in Araxos,
 23°C in Souda, in Andravida and in Preveza at 24/2.



Deviation of mean temperature from normal values



Deviation of maximum temperature from normal values



Deviation of minimum temperature from normal values



Precipitation

First Decameron

Significant rainfalls and thunderstorms from 6/2 to the end.

More specific:

*59mm in Konitsa, 42mm in Arta, 19mm in Elefsina (7/2),
25mm in Mytilini, 19mm in Chios, 21mm in Samos (8/2).*

Second Decameron

Strong rainfalls and thunderstorms over most parts.

More specific:

*25mm in Serres, 28mm in Tatoi at 13/2,
58 in Chios, 27mm in Kithira at 14/2,
36 in Skyros at 15/2, 33mm in Spata at 17/2,
39 in Kerkyra at 18/2 and 32mm in Argostoli at 19/2.*

Third Decameron

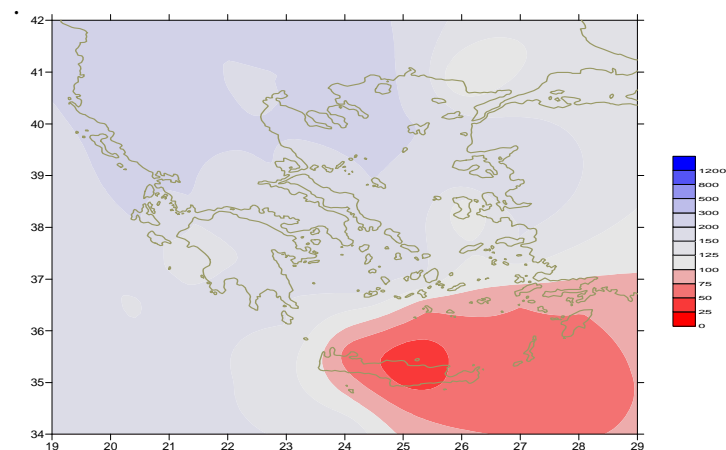
strong rainfalls and thunderstorms mainly over Attica at 22/2

and local heavy thunderstorms over northern

mainland between 25-26/2.

More specific:

*71mm in Hellinikon at 22/2,
49mm in Tatoi, 23mm in Spata, 23mm in Elefsina,
and 49mm in Tanagra at 22/2,
30mm in Kerkyra, 29mm in Ioannina at 25/2,
47mm in Serres at 26/2.*



*Deviation of monthly precipitation
height from normal values (%)*

TABLE OF MEAN VALUES

STATION	Longitude	Latitude	Tmean	TX	TN	RR	INST
SERRES	23,53	41,07	8	12,4	3,6	125	36
FLORINA	21,40	40,78					
KASTORIA	21,27	40,45	4,9	9,2	1	106	82
TRIKALA_IMATHIAS	22,55	40,60					
THESSALONIKI	22,97	40,52	9	12,4	5	76	86
CHRYSOUPOLI	24,62	40,92	8,3	11,5	5,1	99	97
ALEXANDROUPOLI	25,95	40,85	8	11,8	4,7	60	97
KOZANI	21,83	40,28	5,4	9,4	1,2	64	
KERKYRA	19,92	39,62	10,8	13,8	7,6	254	56
IOANNINA	20,82	39,70					
PREVEZA	20,76	38,91	11,1	14,6	7,9	164	
TRIKALA_THESSALIAS	21,77	39,52					
LARISA	22,45	39,65	8,4	13,4	3,5	62	102
LIMNOS	25,23	39,92	10,3	13,2	7,8	73	104
ARTA	21,00	39,17					
AGHIALOS	22,78	39,21	9,5	13,8	5,3	81	121
MYTILINI	26,60	39,05	12	14,6	8,9	147	107
VELO	22,77	37,97					
AGRINIO	21,35	38,60					
LAMIA	22,43	38,87					
ANDRAVIDA	21,28	37,92	11,6	15,1	7,6	144	120
SKYROS	24,48	38,96	11,6	13,8	9,6	106	113
ARGOSTOLI	20,50	38,12	11,9	15,2	8,4	190	132
ARAXOS	21,42	38,15	11,6	15,4	7,8	101	125
TANAGRA	23,57	38,33	9,9	14,3	5,4	97	123
HIOS	26,13	38,35	11,9	14,8	8,9	148	134
PYRGOS	21,42	37,67					
TRIPOLI	22,40	37,52	6,5	10,8	2,4	100	77
TATOI	23,78	38,10	9,5	13,6	5,4	152	
HELLINIKO	23,73	37,90					
ELEYSINA	23,55	38,07	11,1	14,9	7,3	101	
ZAKYNTHOS	20,88	37,75	11,6	15,1	8,2	105	131
SAMOS	26,92	37,68	12,3	15,4	9,5	142	
ARGOS	22,75	37,63					
KALAMATA	22,02	37,07	11,2	15,7	7,1	108	88
NAXOS	25,37	37,10	13,5	16,1	11,2	89	136
METHONI	21,70	36,82					
MHLOS	24,43	36,73					
SPATA	23,95	37,95	11,3	14,9	7,3	104	
KOS	27,08	36,80	12,8	15	10,7	99	
KYTHIRA	22,98	36,15					
SANTORINI	25,41	36,41	13,9	16,4	11,7	47	176
SOUDA	24,12	35,55	12,8	16,3	9,5	65	189
RODOS	28,08	36,40	13,9	16,3	11,5	89	154
MYKONOS	25,35	37,43	12,5	14,6	10,8	82	
HERAKLEIO	25,18	35,33	13,6	17,1	10,7	18	235
IERAPETRA	25,73	35,02					
SITEIA	26,10	35,21	13,3	16,7	10,9	47	160
RETHYMNO	24,50	35,36					
TYMPAKI	24,76	35,06					
KASTELI	25,33	35,18	11	15	7,7	53	170
KARPATIOS	27,15	35,42	15	16,3	14,2	10	
PAROS	25,13	37,02					
SYROS	24,95	37,42	13	15,7	11	56	166
IKARIA	26,35	37,68	12,3	14,6	10,5	104	

TABLE OF DEVIATIONS
FROM NORMAL VALUES

STATION	TMEAN (deviation) (I)	PRECI (deviation %) (II)
SERRES	1.7	294
FLORINA		
THESSALONIKI	2.3	188
ALEXANDROUPOLI	2.2	98
KOZANI	1.8	203
KERKYRA	0.5	187
IOANNINA		
LARISA	1.4	178
LIMNOS	2.4	166
AGHIALOS	1.9	159
MYTILINI	2.2	151
AGRINIO		
SKYROS	1.4	168
ARGOSTOLI	0.2	168
ARAXOS	1.1	118
HIOS	2.1	177
HELLINIKO		
ZAKYNTHOS	0.1	93
SAMOS	2.3	138
KALAMATA	0.5	106
NAXOS	1.4	152
METHONI		
SANTORINI	2.7	77
SOUDA	1.7	58
RODOS	1.9	76
HERAKLIO	1.4	23
SITIA	0.9	63

(I) deviation of mean temperature from normal values
(II) deviation of monthly precipitation height from normal values %.

Climatic Bulletin

General Description

Precipitation amounts were quite higher than normal values over most parts with exception of Southern Aegean and Creta where they were lower enough.
The mean temperature varied higher than normal values everywhere.

Climatic Parameters :

- ❖ **Normal Values** : normal values for various parameters (temperature, precipitation, etc) are defined as mean values calculated for 30 years. These normal values are used as basis and represent the mean situation. They can be specified in 10 daily, monthly, seasonally and yearly level and are used for the trend comparison of 10 days, month, season or year as: rainy decameron, mild winter, cool August etc.

Measurement :

- ❖ **Precipitation**
1 mm = 1 litre/m²

Table Legend :

Tmean : Mean Temperature
TN : Minimum Temperature
TX : Maximum Temperature
RR : Precipitation height(mm)
INST : Sun Duration (hours)

UTC hours (Universal Time Coordinates) in Greece :

- ❖ Winter : UTC hour = local hour - 2
- ❖ Summer : UTC hour = local hour - 3

© Hellenic National Meteorological Service
Reproduction is prohibited without written authorization
14 El.Venizelou 16777
Helliniko, Athens
Greece