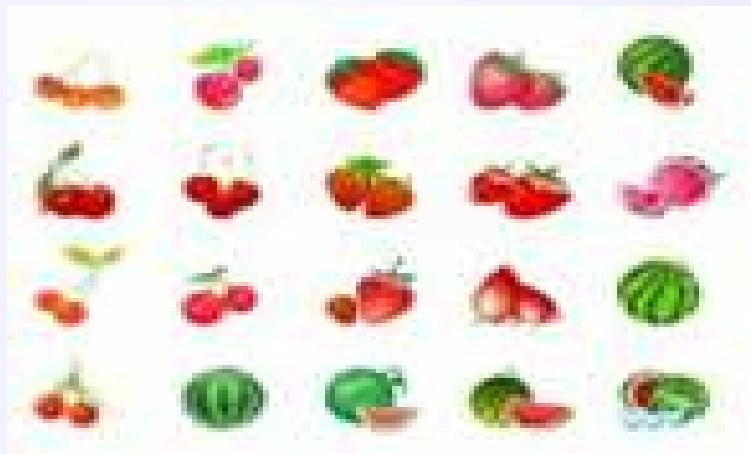




Climatic Bulletin

May 2013

-  Max temperature
-  Min temperature
-  Mean temperature
-  Precipitation
-  Sunshine duration



May started with high values of temperature which declined gradually and rised again till the middle.
Between 17-23/5 gale force south winds prevailed and frequent transportation of dust from Northern Africa recorded.
Meanwhile significant amounts of precipitation recorded mainly during the second week of month.



Temperature

First Decameron

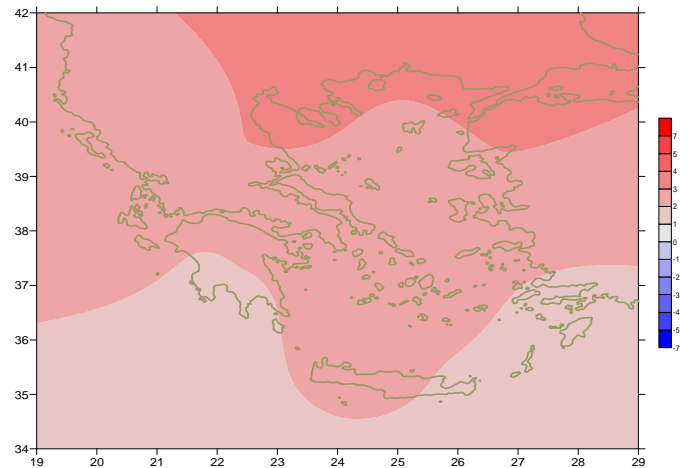
Minimum: variation of values:
 over north mainland from 7°C to 16°C .
 over central mainland from 9°C to 18°C .
 over rest parts from 15°C to 22°C .
Maximum: More specific(the highest):
 33.7°C in Argos at 6/5,
 32.8°C in Serres and 32.7°C in Limnos at 1/5.

Second Decameron

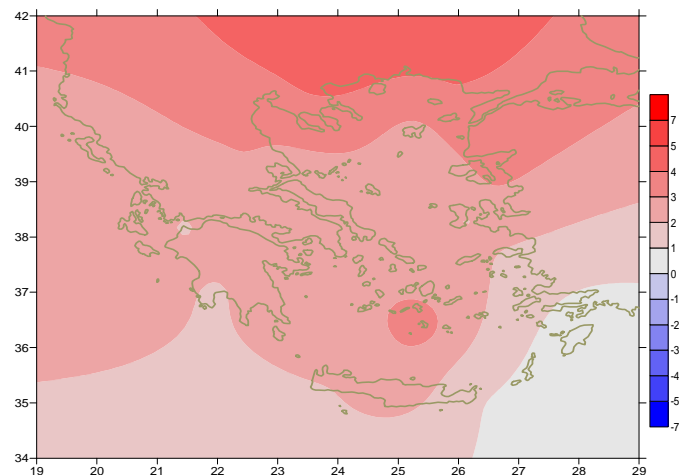
Minimum: variation of values:
 over north mainland from 6°C to 14°C .
 over central mainland from 8°C to 16°C .
 over rest parts from 13°C to 19°C .
Maximum:
 More specific (the highest):
 36 in Iraklion, 33.8°C in Larisa at 18/5,
 34°C in Elefsina at 20/5.

Third Decameron

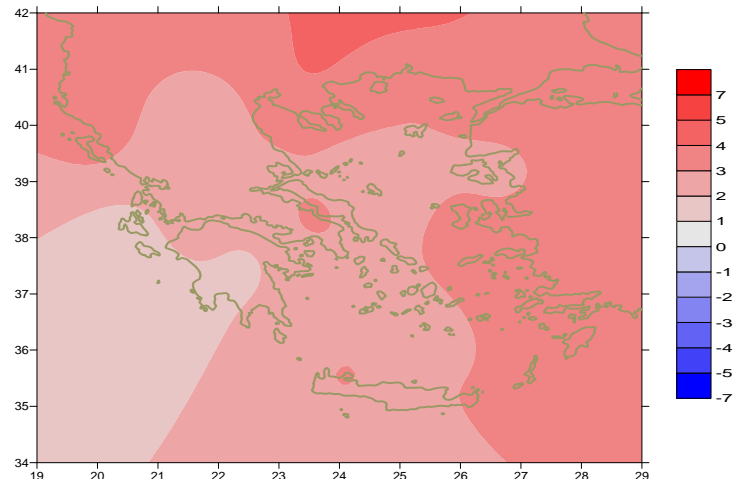
Minimum: variation of values:
 over north mainland from 5°C to 17°C .
 over central mainland from 9°C to 20°C .
 over rest parts from 14°C to 25°C .
Maximum:
 More specific (the highest):
 34.8°C in Serres, 34°C in Lamia at 21/5,
 33°C in Mytilini at 29/5,
 33.2°C in Aghialos at 30/5.



Deviation of mean temperature from normal values



Deviation of maximum temperature from normal values



Deviation of minimum temperature from normal values



Precipitation

First Decameron

Significant precipitation amounts locally over mainland and Crete during last three days.

More specific:

*15mm in Kalamata at 7/5,
32mm in Argos, 47mm in Kithira at 9/5,
44mm in Souda at 10/5.*

Second Decameron

Significant precipitation amounts locally over central mainland and Aegean sea.

More specific:

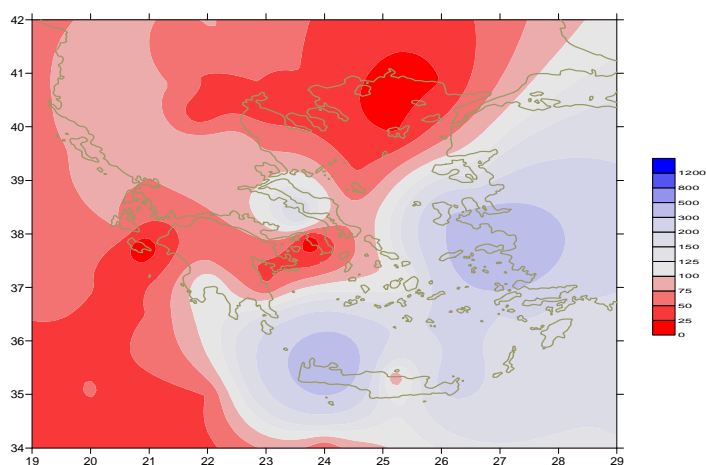
*19mm in Tanagra at 12/5,
55mm in Samos 11mm in Spata at 13/5,
28mm in Skyros at 14/5.*

Third Decameron

A dry period with exception of Northwest parts.

More specific:

*23mm in Kerkira, 14mm in Arta at 24/5,
10mm in Konitsa, 6mm in Ioannina and 9mm in Argostoli at 31/5.*



*Deviation of monthly precipitation
height from normal values (%)*

TABLE OF MEAN VALUES

STATION	Longitude	Latitude	Tmean	TX	TN	RR	INST
SERRES	23,53	41,07	23,1	30	16,6	19	168
FLORINA	21,40	40,78					
KASTORIA	21,27	40,45	18,6	24,4	10,4	24	264
TRIKALA_IMATHIAS	22,55	40,60					
THESSALONIKI	22,97	40,52	23,2	27,8	15,3	3	286
CHRYSOUPOLI	24,62	40,92	21,8	25,7	15,6	7	317
ALEXANDROUPOLI	25,95	40,85	22	26,5	14,9	1	336
KOZANI	21,83	40,28	19,2	25	11,7	16	
KERKYRA	19,92	39,62	22	26,2	16,3	28	270
IOANNINA	20,82	39,70					
PREVEZA	20,76	38,91	21,5	25,7	16,3	9	
TRIKALA_THESSALIAS	21,77	39,52					
LARISA	22,45	39,65	22,6	28,8	13,7	35	250
LIMNOS	25,23	39,92	20,9	24,6	15,7	0	314
ARTA	21,00	39,17					
AGHIALOS	22,78	39,21	22,3	26,8	14,7	25	294
MYTILINI	26,60	39,05	23,1	27,1	17,9	27	315
VELO	22,77	37,97					
AGRINIO	21,35	38,60					
LAMIA	22,43	38,87					
ANDRAVIDA	21,28	37,92	21,9	26,1	15,4	6	281
SKYROS	24,48	38,96	21,9	24,7	17,5	4	271
ARGOSTOLI	20,50	38,12	21,8	24,9	16,2	10	303
ARAXOS	21,42	38,15	22	26	15,7	6	286
TANAGRA	23,57	38,33	22,4	27,4	14,3	40	282
HIOS	26,13	38,35	21,8	24,9	16,7	30	284
PYRGOS	21,42	37,67					
TRIPOLI	22,40	37,52	19,2	25,3	9,9	17	281
TATOI	23,78	38,10	22,3	27,1	14,6	20	
HELLINIKO	23,73	37,90					
ELEVSINA	23,55	38,07	24	28,7	17,9	12	
ZAKYNTHOS	20,88	37,75	22,2	26,1	15,8	0	282
SAMOS	26,92	37,68	22,7	26,4	17,7	65	
ARGOS	22,75	37,63					
KALAMATA	22,02	37,07	21,3	26,3	14,3	24	258
NAXOS	25,37	37,10	21,8	24,7	18,3	8	309
METHONI	21,70	36,82					
MHLOS	24,43	36,73					
SPATA	23,95	37,95	22,7	26,8	16	15	
KOS	27,08	36,80	21,4	24,7	18,3	11	
KYTHIRA	22,98	36,15					
SANTORINI	25,41	36,41	22	25,5	18,3	11	293
SOUDA	24,12	35,55	22,3	26,5	17,6	60	307
RODOS	28,08	36,40	22,1	24,7	19	23	312
MYKONOS	25,35	37,43	21	23,9	18,6	11	
HERAKLEIO	25,18	35,33	22,6	26,1	17,3	8	314
IERAPETRA	25,73	35,02					
SITEIA	26,10	35,21	21,9	25	18,5	30	285
RETHYMNO	24,50	35,36					
TYMPAKI	24,76	35,06					
KASTELI	25,33	35,18	22	27,1	15,5	11	290
KARPATOS	27,15	35,42	22	24,1	19,3	0	
PAROS	25,13	37,02					
SYROS	24,95	37,42					
IKARIA	26,35	37,68	20,9	23	18,8	38	

TABLE OF DEVIATIONS
FROM NORMAL VALUES

STATION	TMEAN (deviation) (I)	PRECI (deviation %) (II)
SERRES	3.6	39
FLORINA		
THESSALONIKI	3.7	7
ALEXANDROUPOLI	3.7	1
KOZANI	2.4	28
KERKYRA	2.4	77
IOANNINA		
LARISA	3	94
LIMNOS	2.5	0
AGHIALOS	2.8	67
MYTILINI	2.9	127
AGRINIO		
SKYROS	2.6	23
ARGOSTOLI	2.3	53
ARAXOS	2.2	32
HIOS	2.3	256
HELLINIKO		
ZAKYNTHOS	2.4	0
SAMOS	2.2	419
KALAMATA	1.5	105
NAXOS	2.4	81
METHONI		
SANTORINI	2.8	183
SOUDA	2.3	461
RODOS	1.6	164
HERAKLIO	2.3	53
SITIA	1.5	231

(I) deviation of mean temperature from normal values
(II) deviation of monthly precipitation height from normal values %.

Climatic Bulletin

General Description

Precipitation amounts were quite higher than normal values over the eastern Aegean islands, Crete island and Dodecanese islands. In contrast they were lower over rest parts and especially over eastern mainland. The mean temperature varied higher than normal values everywhere and particularly over north mainland.

Climatic Parameters :

- ❖ **Normal Values** : normal values for various parameters (temperature, precipitation, etc) are defined as mean values calculated for 30 years. These normal values are used as basis and represent the mean situation. They can be specified in 10 daily, monthly, seasonally and yearly level and are used for the trend comparison of 10 days, month, season or year as: rainy decameron, mild winter, cool August etc.

Measurement :

- ❖ **Precipitation**
1 mm = 1 litre/m²

Table Legend :

Tmean : Mean Temperature
 TN : Minimum Temperature
 TX : Maximum Temperature
 RR : Precipitation height(mm)
 INST : Sun Duration (hours)

UTC hours (Universal Time Coordinates) in Greece :

- ❖ Winter : UTC hour = local hour - 2
- ❖ Summer : UTC hour = local hour - 3

© Hellenic National Meteorological Service
 Reproduction is prohibited without written authorization
 14 El.Venizelou 16777
 Helliniko, Athens
 Greece