




# Climatic Bulletin

June 2014

 **Max  
temperature**

 **Min  
temperature**

 **Mean  
temperature**

 **Precipitation**

 **Sunshine  
duration**

The main characteristic of June was the frequent passing of cold fronts through Greece and the prevailing of unstable weather conditions which caused strong rainfalls, thunderstorms and hail.  
A couple of days (26-27/6) with very high temperatures recorded over southern parts.



ΕΘΝΙΚΗ  
**ΜΕΤΕΩΡΟΛΟΓΙΚΗ**  
ΥΠΗΡΕΣΙΑ  
HELLENIC NATIONAL METEOROLOGICAL SERVICE



# Temperature

## First Decameron

More specific (varied) :

**Minimum:**

from 4°C to 21°C over north mainland,  
from 10°C to 23°C over central mainland,  
from 14°C to 23°C over rest parts.

**Maximum:**

from 19°C to 33°C over north mainland,  
from 21°C to 34°C over central mainland,  
from 22°C to 31°C over rest parts.

## Second Decameron

More specific (varied) :

**Minimum:**

from 8°C to 20°C over North mainland,  
from 15°C to 21°C over central mainland,  
from 16°C to 26°C over rest parts.

**Maximum:**

from 25°C to 34°C over north mainland,  
from 25°C to 33°C over central mainland,  
from 28°C to 35°C over rest parts.

## Third Decameron

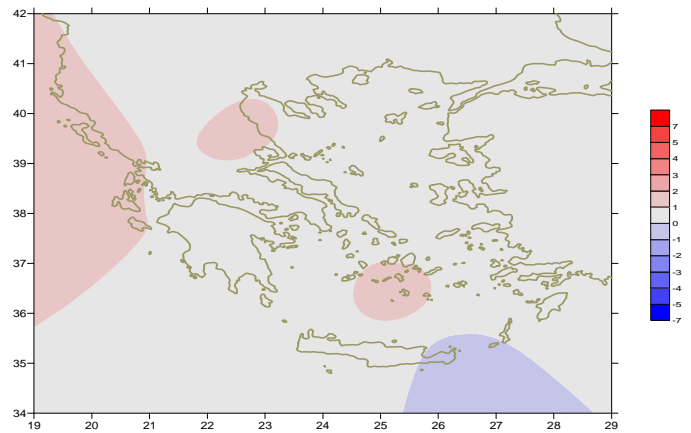
More specific (varied) :

**Minimum:**

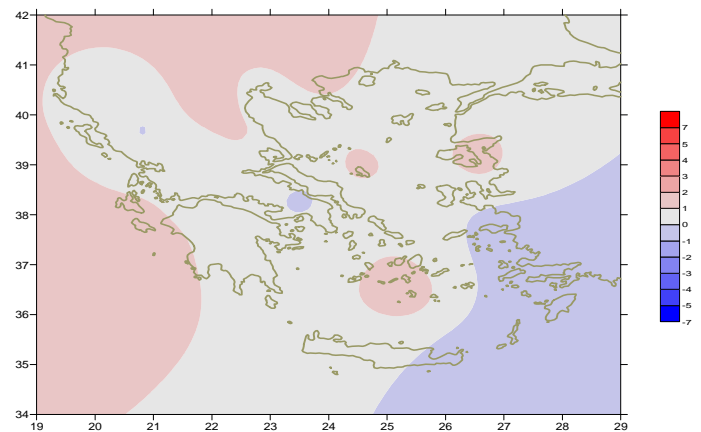
from 6°C to 20°C over north mainland,  
from 11°C to 22°C over central mainland,  
from 17°C to 27°C over rest parts.

**Maximum:**

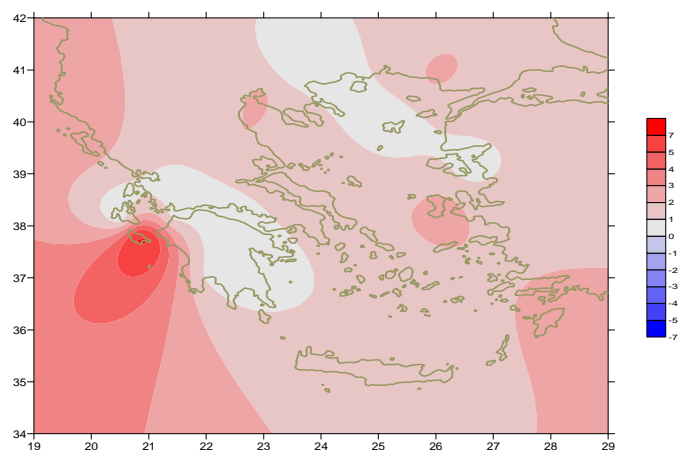
from 26°C to 37°C over north mainland,  
from 27°C to 42°C over central mainland,  
from 28°C to 40°C over rest parts.  
( the highest value: 42.3°C in Argos at 26/6).



*Deviation of mean temperature from normal values*



*Deviation of maximum temperature from normal values*



*Deviation of minimum temperature from normal values*



## P r e c i p i t a t i o n

### First Decameron

Significant local rainfalls and thunderstorms.

More specific:

*24mm in Chrissoupoli(1/6), 18mm in Preveza (3/6),  
32mm in Limno, 14mm in Tanagra, 15mm in Astros (4/6),  
13mm in Samos (5/6).*

### Second Decameron

Significant local rainfalls and thunderstorms mainly between 15 to 20/6.

More specific:

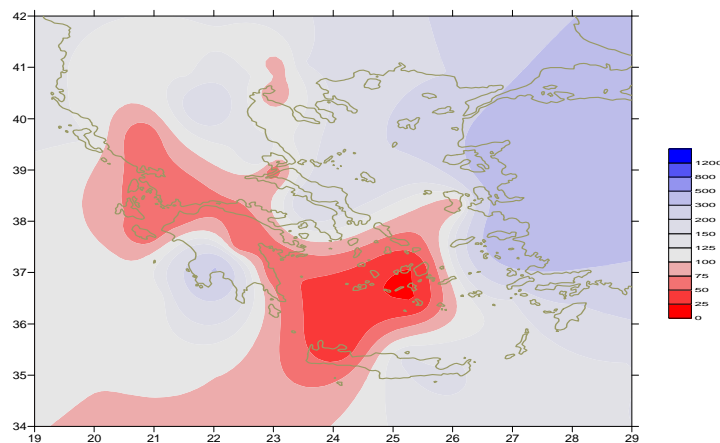
*11mm in Alexandroupoli (11/6), 41mm in Kozani (11/6),  
16mm in Serres, 39mm in Skiathos (15/6),  
15mm in Thessaloniki (19/6),  
12mm in Kerkyra, 14mm in Argostoli (20/6).*

### Third Decameron

Significant local rainfalls and thunderstorms mainly  
over North parts (27-28/6).

More specific:

*3mm in Elefsina (21/6),  
2mm in Alexandroupoli (25/6),  
23mm in Chrissoupoli (28/6).*



*Deviation of monthly precipitation  
height from normal values (%)*

TABLE OF MEAN VALUES

STATION	Longitude	Latitude	Tmean	TX	TN	RR	INST
SERRES	23,53	41,07	24,6	31,2	16,5	54	216
FLORINA	21,40	40,78					
KASTORIA	21,27	40,45	21,1	27,4	12	24	284
TRIKALA_IMATHIAS	22,55	40,60					
THESSALONIKI	22,97	40,52	25,1	29,5	18,2	24	308
CHRYSOUPOLI	24,62	40,92	23,5	26,8	17,6	90	293
ALEXANDROUPOLI	25,95	40,85	23,7	27,4	17	49	294
KOZANI	21,83	40,28	21,7	27,7	14,1	68	
KERKYRA	19,92	39,62	25,1	28,7	19,3	16	327
IOANNINA	20,82	39,70	22,1	27,5	14,3	9	259
PREVEZA	20,76	38,91	23,8	27,4	18,7	24	
TRIKALA_THESSALIAS	21,77	39,52					
LARISA	22,45	39,65	26,5	32	17	25	293
LIMNOS	25,23	39,92	23,4	27,2	17,1	47	334
ARTA	21,00	39,17					
AGHIALOS	22,78	39,21	25,4	29,7	17,7	27	294
MYTILINI	26,60	39,05	25,6	29,8	19,9	24	320
VELO	22,77	37,97					
AGRINIO	21,35	38,60					
LAMIA	22,43	38,87					
ANDRAVIDA	21,28	37,92	24	28,6	16,9	1	289
SKYROS	24,48	38,96	24,5	27,3	20,9	9	280
ARGOSTOLI	20,50	38,12	24,5	27,5	18,7	14	298
ARAXOS	21,42	38,15	24,5	28,7	17,2	2	276
TANAGRA	23,57	38,33	25,4	29,8	17	28	299
HIOS	26,13	38,35	24,7	27,9	19,7	11	325
PYRGOS	21,42	37,67					
TRIPOLI	22,40	37,52	22,1	28,1	11,9	8	258
TATOI	23,78	38,10	24,7	29,2	16,7	13	
HELLINIKO	23,73	37,90					
ELEYSINA	23,55	38,07	26,7	31,1	19,5	17	
ZAKYNTHOS	20,88	37,75	25,2	29,7	15,9	2	310
SAMOS	26,92	37,68	25,3	28,8	20,1	13	
ARGOS	22,75	37,63					
KALAMATA	22,02	37,07	24,3	29,6	16,6	21	247
NAXOS	25,37	37,10	24,1	26,7	20,6	0	364
METHONI	21,70	36,82					
MHLOS	24,43	36,73					
SPATA	23,95	37,95					
KOS	27,08	36,80					
KYTHIRA	22,98	36,15					
SANTORINI	25,41	36,41	25	28,2	20,9	0	334
SOUDA	24,12	35,55	25,1	29,3	19,9	0	330
RODOS	28,08	36,40	25,2	27,6	22	5	353
MYKONOS	25,35	37,43	24	26,7	20,6	0	
HERAKLEIO	25,18	35,33	24,9	27,6	20	5	341
IERAPETRA	25,73	35,02					
SITEIA	26,10	35,21	24	27	20,9	6	
RETHYMNO	24,50	35,36					
TYMPAKI	24,76	35,06					
KASTELI	25,33	35,18	24	28,4	17,4	4	3,16
KARPATHOS	27,15	35,42	24,3	27,3	22	0	
PAROS	25,13	37,02					
SYROS	24,95	37,42	24,7	28,4	20,5	0	341
IKARIA	26,35	37,68	23,1	25,1	21,2	9	

TABLE OF DEVIATIONS  
FROM NORMAL VALUES

STATION	TMEAN ( deviation ) (I)	PRECI (deviation % ) (II)
SERRES	0.7	123
FLORINA		
THESSALONIKI	0.9	76
ALEXANDROUPOLI	0.7	180
KOZANI	0.4	175
KERKYRA	1.3	112
IOANNINA	0.4	19
LARISA	1.6	106
LIMNOS	0.1	215
AGHIALOS	1	128
MYTILINI	1	400
AGRINIO		
SKYROS	0.8	173
ARGOSTOLI	1	67
ARAXOS	0.5	22
HIOS	0.8	72
HELLINIKO		
ZAKYNTHOS	1.1	28
SAMOS	0.1	482
KALAMATA	0.2	323
NAXOS	0.9	0
METHONI		
SANTORINI	1.6	1
SOUDA	0.7	1
RODOS	0.5	173
HERAKLIO	0.6	156
SITIA	-0.4	128

(I) deviation of mean temperature from normal values

(II) deviation of monthly precipitation height from normal values %.

# Climatic Bulletin

## General Description

Precipitation amounts were higher than normal values everywhere with exception of few parts of southern, central mainland and southwestern Aegean area .  
The mean temperature varied near by the normal values.

### Climatic Parameters :

- ❖ **Normal Values** : normal values for various parameters (temperature, precipitation, etc) are defined as mean values calculated for 30 years. These normal values are used as basis and represent the mean situation. They can be specified in 10 daily, monthly, seasonally and yearly level and are used for the trend comparison of 10 days, month, season or year as: rainy decameron, mild winter, cool August etc.

### Measurement :

- ❖ **Precipitation**  
1 mm = 1 litre/m<sup>2</sup>

### Table Legend :

Tmean : Mean Temperature  
TN : Minimum Temperature  
TX : Maximum Temperature  
RR : Precipitation height(mm)  
INST : Sun Duration (hours)

### UTC hours (Universal Time Coordinates) in Greece :

- ❖ Winter : UTC hour = local hour - 2
- ❖ Summer : UTC hour = local hour - 3

© Hellenic National Meteorological Service  
Reproduction is prohibited without written authorization  
14 El.Venizelou 16777  
Helliniko, Athens  
Greece