




Climatic Bulletin

February 2015

 **Max
temperature**

 **Min
temperature**

 **Mean
temperature**

 **Precipitation**

 **Sunshine
duration**

February had a hot first week with strong rainfalls, thunderstorms and strong gale force South winds. A cold ten days period followed which characterized by significant snowfalls (the snow covered the whole Attica for a few hours). The weather conditions changed during last week, the temperature raised but heavy rainfalls and thunderstorms caused local floods.



Temperature

First Decameron

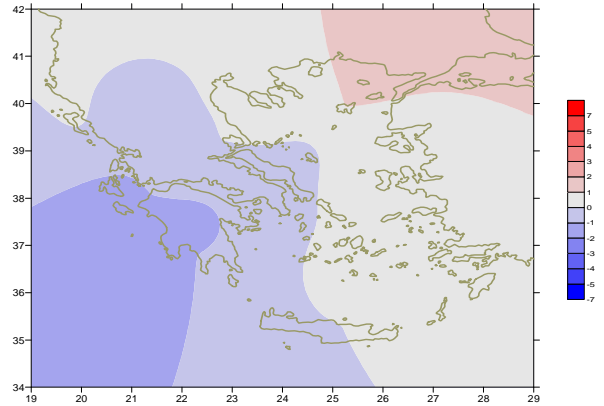
More specific (varied) :

Minimum:

from -12.1°C to 9°C over north mainland,
 from -2°C to 16°C over central mainland,
 from $+3^{\circ}\text{C}$ to 17°C over rest parts.

Maximum:

from -2.8°C to 18°C over north mainland,
 from $+2^{\circ}\text{C}$ to 21°C over central mainland,
 from $+5^{\circ}\text{C}$ to 24°C over rest parts.



Deviation of mean temperature from normal values

Second Decameron

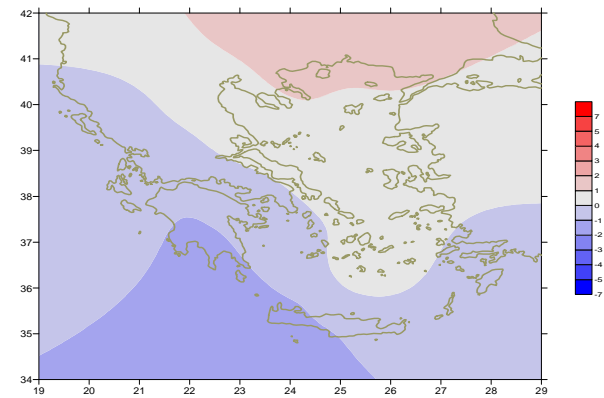
More specific (varied) :

Minimum:

from -8°C to 2°C over North mainland,
 from -1°C to 7°C over central mainland,
 from $+3^{\circ}\text{C}$ to 10°C over rest parts.

Maximum:

from $+2^{\circ}\text{C}$ to 13°C over north mainland,
 from $+3^{\circ}\text{C}$ to 14°C over central mainland,
 from $+4^{\circ}\text{C}$ to 16°C over rest parts.



Deviation of maximum temperature from normal values

Third Decameron

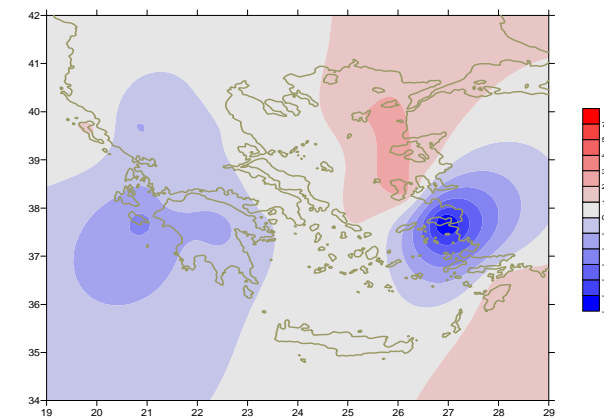
More specific (varied) :

Minimum:

from -6°C to 5°C over north mainland,
 from -4°C to 12°C over central mainland,
 from $+1^{\circ}\text{C}$ to 15°C over rest parts.

Maximum:

from $+5^{\circ}\text{C}$ to 17°C over north mainland,
 from $+9^{\circ}\text{C}$ to 14°C over central mainland,
 from $+13^{\circ}\text{C}$ to 18°C over rest parts.



Deviation of minimum temperature from normal values



P r e c i p i t a t i o n

First Decameron

Remarkable precipitation mainly over west, north mainland and eastern south parts of Aegean sea.

More specific:

*48mm in Konitsa, 45mm in Kozani, 53mm in Ioannina (1/2),
25mm in Preveza (6/2),
24mm in Andravida, 27mm in Kalamata, 14mm in Argostoli (9/2),
26mm in Karistos, 20mm in Spata (airport), 24mm in Kos,
29mm in Sitia, 41mm in Kasteli (10/2).*

Second Decameron

Significant snowfalls mainly over eastern mainland and Aegean sea area. (Also remarkable snowfalls over Attika).

More specific:

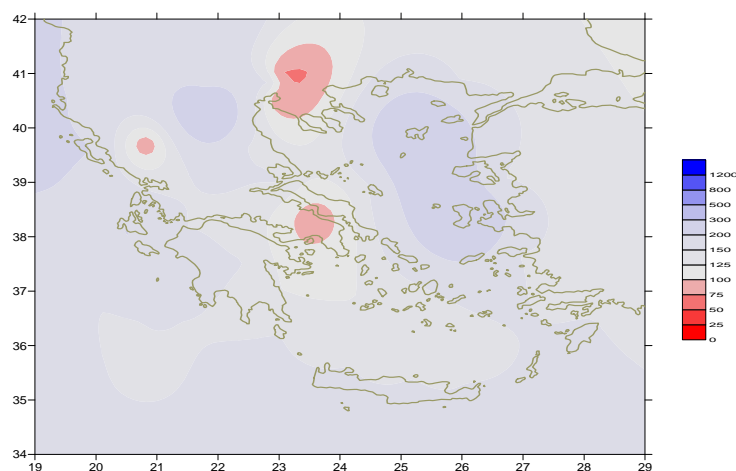
*17mm in Souda, 15mm in Kasteli (12/2),
11mm in Iraklio (14/2),
6mm in Edessa, 4mm in Aghialos (17/2).*

Third Decameron

Locally strong rainfalls, thunderstorms over most parts.

More specific:

*79mm in Kerkira, 61mm in Limnos,
94mm in Chios, 76mm in Rodos,
51mm in Ikaria (23/2),
41mm in Mukonos, 50mm in Kastelorizo (24/2),
46mm in Zakynthos (26/2).*



*Deviation of monthly precipitation
height from normal values (%)*

TABLE OF MEAN VALUES

STATION	Longitude	Latitude	Tmean	TX	TN	RR	INST
SERRES	23,53	41,07	6,9	12,3	1,6	30	79
FLORINA	21,40	40,78					
KASTORIA	21,27	40,45	3,4	8,5	-1,9	97	135
TRIKALA_IMATHIAS	22,55	40,60					
THESSALONIKI	22,97	40,52	7,2	11,4	2,9	24	154
CHRYSOUPOLI	24,62	40,92	7,1	11	3,2	92	150
ALEXANDROUPOLI	25,95	40,85	7	11	3,8	64	131
KOZANI	21,83	40,28	3,3	8,4	-0,6	90	
KERKYRA	19,92	39,62	10,4	13,8	6,8	261	136
IOANNINA	20,82	39,70	5,7	11,2	0,1	45	76
PREVEZA	20,76	38,91	9,8	13,5	6,6	179	
TRIKALA_THESSALIAS	21,77	39,52					
LARISA	22,45	39,65	6,7	12,1	1,5	39	142
LIMNOS	25,23	39,92	8,9	11,5	6,7	132	121
ARTA	21,00	39,17					
AGHIALOS	22,78	39,21	7,6	12,5	3,7	68	157
MYTILINI	26,60	39,05	10,4	12,9	8,5	114	114
VELO	22,77	37,97					
AGRINIO	21,35	38,60					
LAMIA	22,43	38,87					
ANDRAVIDA	21,28	37,92	9,1	13,5	4,9	175	163
SKYROS	24,48	38,96	10	13,5	7,7	68	107
ARGOSTOLI	20,50	38,12	10,4	14,2	7,6	196	172
ARAXOS	21,42	38,15	9,6	13,3	5,8	132	177
TANAGRA	23,57	38,33	8,1	12,5	4,3	36	92
HIOS	26,13	38,35	10,7	13	8,8	190	121
PYRGOS	21,42	37,67					
TRIPOLI	22,40	37,52	4,4	9,4	-0,1	141	117
TATOI	23,78	38,10	7,7	11,4	4,1	63	
HELLINIKO	23,73	37,90	10,3	13,6	7,5	41	122
ELEYSINA	23,55	38,07	9,3	12,9	5,9	67	
ZAKYNTHOS	20,88	37,75	9,6	14,3	5,8	190	160
SAMOS	26,92	37,68					
ARGOS	22,75	37,63					
KALAMATA	22,02	37,07	9,7	14,3	5,2	136	138
NAXOS	25,37	37,10	12,3	14,5	10,2	69	96
METHONI	21,70	36,82					
MHLOS	24,43	36,73					
SPATA	23,95	37,95	10,8	12,6	6,4	59	
KOS	27,08	36,80	11	13,2	9,2	102	
KYTHIRA	22,98	36,15					
SANTORINI	25,41	36,41	12,2	14,2	10	63	123
SOUDA	24,12	35,55	10,8	13,8	8,3	119	126
RODOS	28,08	36,40	12,7	14,8	10,6	163	138
MYKONOS	25,35	37,43	10,6	12,4	9	84	
HRAKLEIO	25,18	35,33	12,2	14,7	9,4	81	107
IERAPETRA	25,73	35,02					
SITEIA	26,10	35,21					
RETHYMNO	24,50	35,36					
TYMPAKI	24,76	35,06					
KASTEI	25,33	35,18	9,4	12	6,8	176	105
KARPATOS	27,15	35,42	13,2	15	11,7	26	
PAROS	25,13	37,02					
SYROS	24,95	37,42	11,2	13,3	8,8	69	127
IKARIA	26,35	37,68	11	12,7	9,2	97	

TABLE OF DEVIATIONS
FROM NORMAL VALUES

STATION	TMEAN	PRECI
	(deviation)	(deviation %)
	(I)	(II)
SERRES	0.6	71
FLORINA		
THESSALONIKI	0.5	60
ALEXANDROUPOLI	1.2	105
KOZANI	-0.3	285
KERKYRA	0.1	192
IOANNINA	-0.4	39
LARISA	-0.1	112
LIMNOS	1	299
AGHIALOS	0	133
MYTILINI	0.6	117
AGRINIO		
SKYROS	-0.2	108
ARGOSTOLI	-1.3	173
ARAXOS	-0.9	155
HIOS	0.9	228
HELLINIKO	-0.2	86
ZAKYNTHOS	-1.9	168
SAMOS		
KALAMATA	-1	133
NAXOS	0.2	118
METHONI		
SANTORINI	1	104
SOUDA	-0.3	106
RODOS	0.7	139
HERAKLIO	0	105
SITIA		

(I) deviation of mean temperature from normal values

(II) deviation of monthly precipitation height from normal values %.

Climatic Bulletin

General Description

Precipitation amounts were higher than normal values over most parts, particularly over Ionian area, Northwest mainland and Aegean area. The mean temperature varied close to normal values but it was slightly lower over Ionian and west mainland.

Climatic Parameters :

- ❖ **Normal Values** : normal values for various parameters (temperature, precipitation, etc) are defined as mean values calculated for 30 years. These normal values are used as basis and represent the mean situation. They can be specified in 10 daily, monthly, seasonally and yearly level and are used for the trend comparison of 10 days, month, season or year as: rainy decameron, mild winter, cool August etc.

Measurement :

- ❖ **Precipitation**
1 mm = 1 litre/m²

Table Legend :

Tmean : Mean Temperature
 TN : Minimum Temperature
 TX : Maximum Temperature
 RR : Precipitation height(mm)
 INST : Sun Duration (hours)

UTC hours (Universal Time Coordinates) in Greece :

- ❖ Winter : UTC hour = local hour - 2
- ❖ Summer : UTC hour = local hour - 3

© Hellenic National Meteorological Service
 Reproduction is prohibited without written authorization
 14 El.Venizelou 16777
 Helliniko, Athens
 Greece