



# Climatic Bulletin

October 2015

 **Max  
temperature**

 **Min  
temperature**

 **Mean  
temperature**

 **Precipitation**

 **Sunshine  
duration**

October had a long period with relatively high temperatures and southerly but north winds prevailed during last week and the temperature declined rapidly. However the month characterized by very strong rainfalls and thunderstorms which took place the periods 7-8/10 , 10-11/10 and mainly between 21th and 23th of October over central -southern parts. Because of the above mentioned severe phenomena a lot of great damages caused. Particularly over Attica significant floods recorded on the 22th of the month.



ΕΘΝΙΚΗ  
**ΜΕΤΕΩΡΟΛΟΓΙΚΗ**  
ΥΠΗΡΕΣΙΑ

HELLENIC NATIONAL METEOROLOGICAL SERVICE



# Temperature

### First Decameron

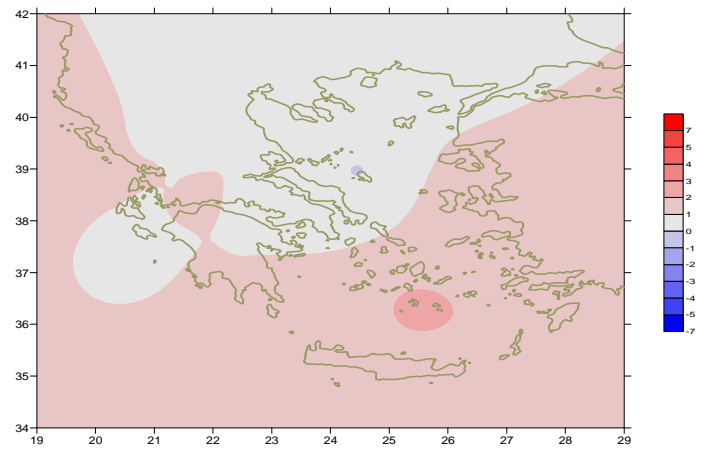
More specific (varied) :

**Minimum:**

from 5°C to 17°C over north mainland,  
from 10°C to 19°C over central mainland,  
from 13°C to 21°C over rest parts.

**Maximum:**

from 16°C to 27°C over north mainland,  
from 17°C to 25°C over central mainland,  
from 20°C to 30°C over rest parts.



*Deviation of mean temperature from normal values*

### Second Decameron

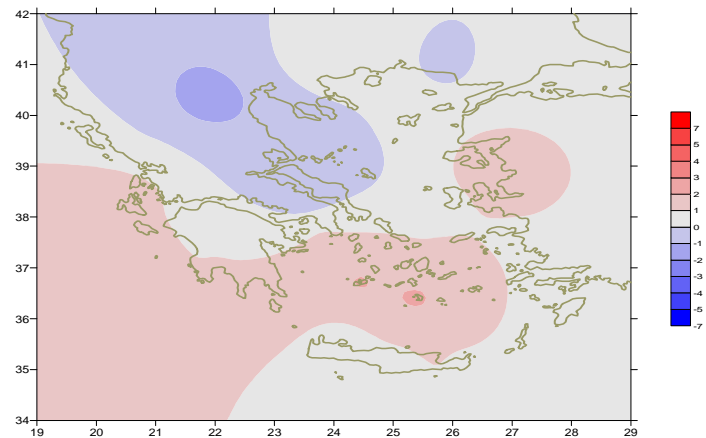
More specific (varied) :

**Minimum:**

from 5°C to 16°C over north mainland,  
from 7°C to 18°C over central mainland,  
from 11°C to 21°C over rest parts.

**Maximum:**

from 14°C to 25°C over north mainland,  
from 20°C to 27°C over central mainland,  
from 21°C to 31°C over rest parts.



*Deviation of maximum temperature from normal values*

### Third Decameron

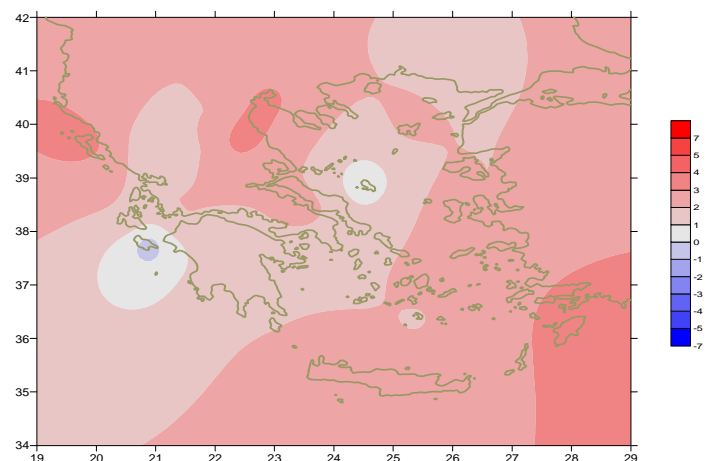
More specific (varied) :

**Minimum:**

from -2°C to 14°C over north mainland,  
from 0°C to 19°C over central mainland,  
from 8°C to 20°C over rest parts.

**Maximum:**

from 12°C to 20°C over north mainland,  
from 15°C to 26°C over central mainland,  
from 16°C to 24°C over rest parts.



*Deviation of minimum temperature from normal values*



## P r e c i p i t a t i o n

### First Decameron

Local heavy rainfalls and thunderstorms during last days.

More specific:

*19mm in Larisa, 30mm in Andravida, 34mm in Killini (7/10),  
41mm in Edessa, 30mm in Santorini, 20mm in Kimi (8/10),  
40mm in Edessa, 20mm in Ioannina (10/10).*

### Second Decameron

Local strong rainfalls and thunderstorms mainly between 10-11/10.

More specific:

*30mm in Kastoria, 34mm in Kozani, 25mm in Tanagra, 26m in Doxato (11/10),  
26mm in Kerkira, 31mm in Argostoli (16/10).*

### Third Decameron

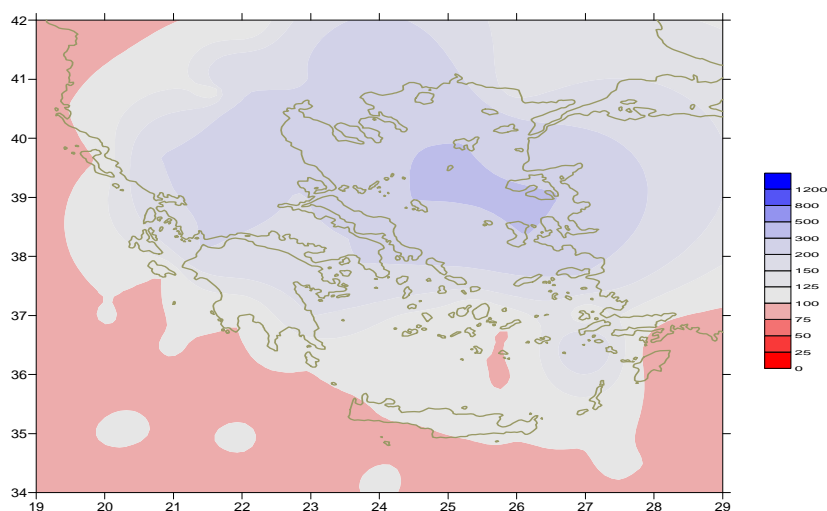
Very strong rainfalls with long duration and local severe thunderstorms temporarily over most parts during the period 21-24/10.

More specific:

*52mm in Serres, 66mm in Konitsa, 49mm in Preveza, 135mm in Andravida,  
127mm in Araxos, 94mm in Desfina, 124mm in Tanagra,  
48mm in Kalamata, 115mm in N. Filadelfia, 63mm in OAKA (22/10),  
40mm in Skiros, 37mm in Mikonos, 45mm in Timbaki (23/10),*

*100mm in Skiathos, 48mm in Mitilini, 65mm in Chios, 46mm in Souda (24/10),*

*100mm in Kasteli (Iraklion)(25/10).*



**Deviation of monthly precipitation  
height from normal values (%)**

TABLE OF MEAN VALUES

STATION	Longitude	Latitude	Tmean	TX	TN	RR	INST
SERRES	23,53	41,07	16,1	21,7	11,3	119	110
FLORINA	21,40	40,78					
KASTORIA	21,27	40,45	13,5	17,9	9,6	132	121
TRIKALA_IMATHIAS	22,55	40,60					
THESSALONIKI	22,97	40,52	17	20,3	13,8	91	133
CHRYSOUPOLI	24,62	40,92	16,1	20	12,3	52	177
ALEXANDROUPOLI	25,95	40,85	15,9	20	11,9	63	183
KOZANI	21,83	40,28	13,9	17,4	9,9	120	
KERKYRA	19,92	39,62	20,1	23,7	16,7	117	167
IOANNINA	20,82	39,70	15,6	21,3	9,3	127	138
PREVEZA	20,76	38,91	20	23,4	16,6	100	
TRIKALA_THESSALIAS	21,77	39,52					
LARISA	22,45	39,65	17	21,3	13,3	109	105
LIMNOS	25,23	39,92	17,4	20,5	14,6	96	195
ARTA	21,00	39,17					
AGHIALOS	22,78	39,21	17,7	21,1	14,2	98	126
MYTILINI	26,60	39,05	19,7	23,1	16,6	100	211
VELO	22,77	37,97					
AGRINIO	21,35	38,60					
LAMIA	22,43	38,87					
ANDRAVIDA	21,28	37,92	19,6	24,4	14,6	193	203
SKYROS	24,48	38,96	18	20,1	15,7	81	180
ARGOSTOLI	20,50	38,12	20,6	24,4	17,6	123	209
ARAXOS	21,42	38,15	20,1	24	15,8	174	216
TANAGRA	23,57	38,33	17,6	21,4	13,8	90	158
HIOS	26,13	38,35	19,5	22,4	16,3	101	218
PYRGOS	21,42	37,67					
TRIPOLI	22,40	37,52	15,3	21	9,5	74	188
TATOI	23,78	38,10	17,4	21,4	13,8	188	
HELLINIKO	23,73	37,90	20	23,8	16,7	79	212
ELEYSINA	23,55	38,07	19,6	23,1	15,9	82	
ZAKYNTHOS	20,88	37,75	19,9	24,4	15,1	75	211
SAMOS	26,92	37,68					
ARGOS	22,75	37,63					
KALAMATA	22,02	37,07	20	25,7	14,7	84	219
NAXOS	25,37	37,10	20,8	22,6	19	36	201
METHONI	21,70	36,82					
MHLOS	24,43	36,73					
SPATA	23,95	37,95	18,8	21,8	14,8	69	
KOS	27,08	36,80	20,6	23,1	18,3	25	
KYTHIRA	22,98	36,15					
SANTORINI	25,41	36,41	21,2	23,8	18,3	36	212
SOUDA	24,12	35,55	20,5	23,5	17,9	74	180
RODOS	28,08	36,40	22,6	25	20,2	6	250
MYKONOS	25,35	37,43	19,5	21,9	18	51	
HRAKLEIO	25,18	35,33	21,6	24	18,7	29	172
IERAPETRA	25,73	35,02					
SITEIA	26,10	35,21					
RETHYMNO	24,50	35,36					
TYMPAKI	24,76	35,06					
KASTELI	25,33	35,18	19,3	22,8	15,8	171	186
KARPATIOS	27,15	35,42	22,3	24,8	20,4	8	
PAROS	25,13	37,02					
SYROS	24,95	37,42	20	22,5	17,8	61	242
IKARIA	26,35	37,68	20,7	22,5	19,2	77	

TABLE OF DEVIATIONS  
FROM NORMAL VALUES

STATION	TMEAN ( deviation ) (I)	PRECI ( deviation % ) (II)
SERRES	0.7	272
FLORINA		
THESSALONIKI	0.9	224
ALEXANDROUPOLI	0.4	125
KOZANI	0.5	237
KERKYRA	1.7	79
IOANNINA	0.7	133
LARISA	0.9	231
LIMNOS	0.8	267
AGHIALOS	1	151
MYTILINI	1.4	262
AGRINIO		
SKYROS	-0.1	209
ARGOSTOLI	0.9	115
ARAXOS	1.2	204
HIOS	1.5	271
HELLINIKO	0.7	165
ZAKYNTHOS	0.3	51
SAMOS		
KALAMATA	1.2	84
NAXOS	1.5	92
METHONI		
SANTORINI	2.3	124
SOUDA	1.5	93
RODOS	2	9
HERAKLIO	1.7	42
SITIA		

(I) deviation of mean temperature from normal values  
(II) deviation of monthly precipitation height from normal values %.

# Climatic Bulletin

## General Description

Precipitation amounts were higher than normals over most parts. The mean temperature varied close to normal values, in general.

### Climatic Parameters :

- ❖ **Normal Values** : normal values for various parameters (temperature, precipitation, etc) are defined as mean values calculated for 30 years. These normal values are used as basis and represent the mean situation. They can be specified in 10 daily, monthly, seasonally and yearly level and are used for the trend comparison of 10 days, month, season or year as: rainy decameron, mild winter, cool August etc.

### Measurement :

- ❖ **Precipitation**  
1 mm = 1 litre/m<sup>2</sup>

### Table Legend :

Tmean : Mean Temperature  
 TN : Minimum Temperature  
 TX : Maximum Temperature  
 RR : Precipitation height(mm)  
 INST : Sun Duration (hours)

### UTC hours (Universal Time Coordinates) in Greece :

- ❖ Winter : UTC hour = local hour - 2
- ❖ Summer : UTC hour = local hour - 3

© Hellenic National Meteorological Service  
 Reproduction is prohibited without written authorization  
 14 El.Venizelou 16777  
 Helliniko, Athens  
 Greece