




Climatic Bulletin

November 2015

 **Max
temperature**

 **Min
temperature**

 **Mean
temperature**

 **Precipitation**

 **Sunshine
duration**

November was a dry month in general with lack of precipitation during the first twenty days. In contrast to the last ten days when a lot of local rainfalls, thunderstorms and snowfalls over mountainous mainland recorded.



ΕΘΝΙΚΗ
ΜΕΤΕΩΡΟΛΟΓΙΚΗ
ΥΠΗΡΕΣΙΑ
HELLENIC NATIONAL METEOROLOGICAL SERVICE



Temperature

First Decameron

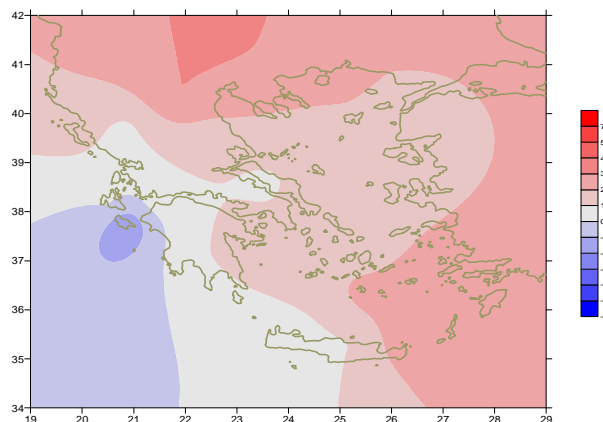
More specific (varied) :

Minimum:

from -5°C to 12°C over north mainland,
from -2°C to 14°C over central mainland,
from +3°C to 18°C over rest parts.

Maximum:

from 12°C to 25°C over north mainland,
from 12°C to 27°C over central mainland,
from 14°C to 29°C over rest parts.



Deviation of mean temperature from normal values

Second Decameron

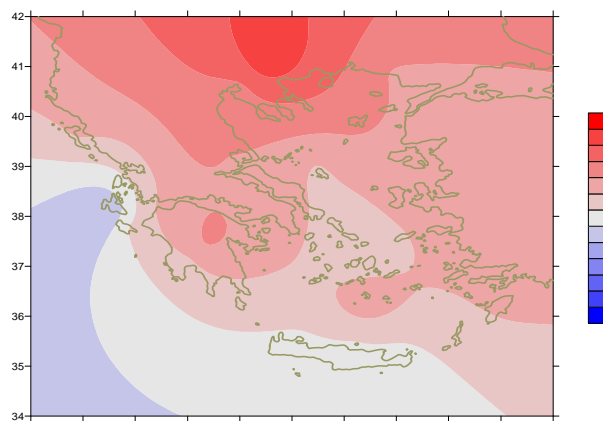
More specific (varied) :

Minimum:

from -2°C to 12°C over north mainland,
from +2°C to 15°C over central mainland,
from 5°C to 16°C over rest parts.

Maximum:

from 12°C to 23°C over north mainland,
from 18°C to 28°C over central mainland,
from 19°C to 25°C over rest parts.



Deviation of maximum temperature from normal values

Third Decameron

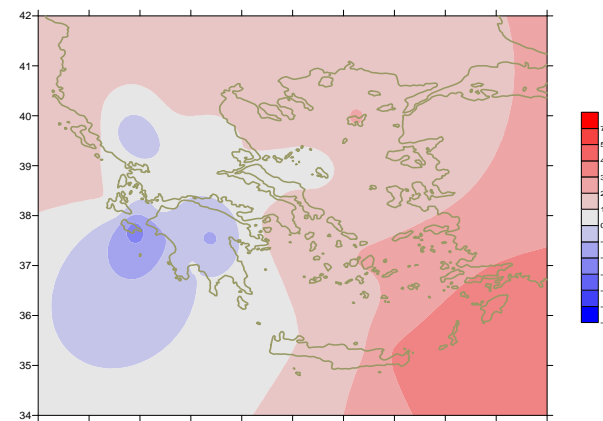
More specific (varied) :

Minimum:

from -5°C to 15°C over north mainland,
from -1°C to 19°C over central mainland,
from 7°C to 19°C over rest parts.

Maximum:

from 14°C to 25°C over north mainland,
from 15°C to 24°C over central mainland,
from 15°C to 24°C over rest parts.



Deviation of minimum temperature from normal values



P r e c i p i t a t i o n

First Decameron

Lack of precipitation

Second Decameron

No significant precipitation.

Third Decameron

Remarkable precipitation over most parts.

More specific:

29mm in Kastoria, 23mm in Ioannina at 21/11

19mm in Argostoli, 27mm in Araxos at 23/11,

35mm in Kastoria, 52mm in Kerkira, 69mm in Ioannina,

88mm in Preveza, 40mm in Kalamata, 22mm in Leonidio at 25/11,

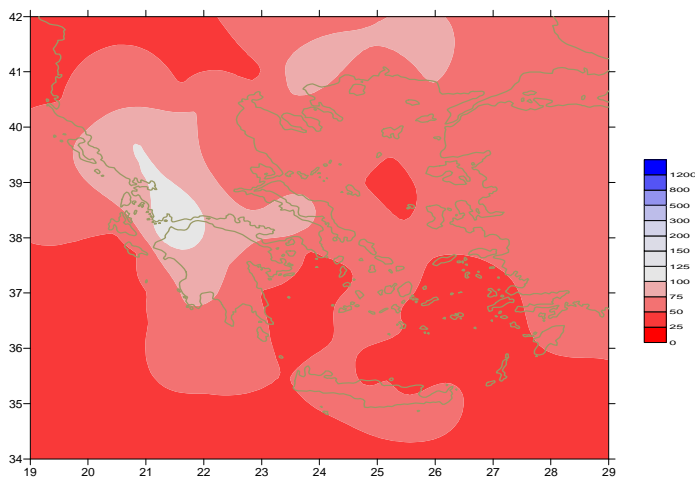
30mm in Serres, 15mm in Mitilini, 30mm in Tanagra, 12mm in Rodos at 26/11,

46mm in Chrisoupoli, 36mm in Alexandroupoli, 49mm in Konitsa,

30mm in Preveza, 36mm in Argostoli, 34mm in Kalamata, 22mm in Timbaki at 27/11,

30mm in Mililini, 22mm in Tripoli, 17mm in Zakynthos,

17mm in Samos, 15mm in Icaria, 12mm in Kos at 28/11.



*Deviation of monthly precipitation
height from normal values (%)*

TABLE OF MEAN VALUES

STATION	Longitude	Latitude	Tmean	TX	TN	RR	INST
SERRES	23,53	41,07	12	19.5	6	44	158
FLORINA	21,40	40,78					
KASTORIA	21,27	40,45	9.9	17.5	2.8	62	177
TRIKALA_IMATHIAS	22,55	40,60					
THESSALONIKI	22,97	40,52	13.6	19	8.5	37	190
CHRYSOUPOLI	24,62	40,92	13.1	18.4	8.3	74	203
ALEXANDROUPOLI	25,95	40,85	13	18	8.3	49	173
KOZANI	21,83	40,28	11	16.6	5.4	35	
KERKYRA	19,92	39,62	15.7	20.9	11.7	146	173
IOANNINA	20,82	39,70	10.4	18.2	3.9	74	095
PREVEZA	20,76	38,91	15.5	20.3	11.8	185	
TRIKALA_THESSALIAS	21,77	39,52					
LARISA	22,45	39,65	12.4	19.6	5.8	19	149
LIMNOS	25,23	39,92	14.2	18.7	11.2	7	214
ARTA	21,00	39,17					
AGHIALOS	22,78	39,21	13.4	19.9	9	14	207
MYTILINI	26,60	39,05	15.9	19.7	12.8	49	201
VELO	22,77	37,97					
AGRINIO	21,35	38,60					
LAMIA	22,43	38,87					
ANDRAVIDA	21,28	37,92	15.3	21	10.2	65	189
SKYROS	24,48	38,96	15.9	19.1	12.7	19	178
ARGOSTOLI	20,50	38,12	15.7	17.5	13.4	45	180
ARAXOS	21,42	38,15	15	20.9	10.6	137	208
TANAGRA	23,57	38,33	13.6	20.1	8.7	55	194
HIOS	26,13	38,35	15.5	19.5	11.6	24	207
PYRGOS	21,42	37,67					
TRIPOLI	22,40	37,52	19.2	18.7	3.7	76	183
TATOI	23,78	38,10					
HELLINIKO	23,73	37,90	17.4	21.4	13.8	22	239
ELEYSINA	23,55	38,07	16.2	21.1	11.5	25	
ZAKYNTHOS	20,88	37,75	13.9	20.1	9.8	32	181
SAMOS	26,92	37,68					
ARGOS	22,75	37,63					
KALAMATA	22,02	37,07	15.5	22.3	9.9	118	196
NAXOS	25,37	37,10	17.6	19.7	15.5	21	153
METHONI	21,70	36,82					
MHLOS	24,43	36,73					
SPATA	23,95	37,95	15.6	19.9	9.6		
KOS	27,08	36,80	17.6	20.3	15.4	18	
KYTHIRA	22,98	36,15					
SANTORINI	25,41	36,41	17.8	20.9	14.6	14	216
SOUDA	24,12	35,55	16.2	20.4	12.9	14	180
RODOS	28,08	36,40	19.2	22.4	16.5	28	237
MYKONOS	25,35	37,43					
HRAKLEIO	25,18	35,33	17.6	20.8	15	20	184
IERAPETRA	25,73	35,02					
SITEIA	26,10	35,21	19.1	21	17	17	200
RETHYMNO	24,50	35,36					
TYMPAKI	24,76	35,06					
KASTEI	25,33	35,18	14.8	18.6	11.6	25	176
KARPATOS	27,15	35,42	19.2	22	17.4	8	
PAROS	25,13	37,02					
SYROS	24,95	37,42	17.1	20.1	14.8	24	233
IKARIA	26,35	37,68	18	19.6	16.5	23	

**TABLE OF DEVIATIONS
FROM NORMAL VALUES**

STATION	TMEAN	PRECI
	(deviation)	(deviation %)
	(I)	(II)
SERRES	2.9	82
FLORINA		
THESSALONIKI	2.7	64
ALEXANDROUPOLI	2	65
KOZANI	3	58
KERKYRA	1.5	81
IOANNINA	0.7	45
LARISA	1.6	33
LIMNOS	1.9	9
AGHIALOS	1.3	22
MYTILINI	1.4	52
AGRINIO		
SKYROS	1.2	35
ARGOSTOLI	0	28
ARAXOS	0.4	103
HIOS	1.7	29
HELLINIKO	2	43
ZAKYNTHOS	-1.9	20
SAMOS		
KALAMATA	0.8	83
NAXOS	1.4	44
METHONI		
SANTORINI	2.4	26
SOUDA	0.6	19
RODOS	2.8	32
HERAKLIO	1	34
SITIA	2.3	28

(I) deviation of mean temperature from normal values
 (II) deviation of monthly precipitation height from normal values %.

Climatic Bulletin

General Description

Precipitation amounts varied very lower than normals over most parts, with the exception of Epirus.
The mean temperature was higher than normal values, with the exception of central Ionian area.

Climatic Parameters :

- ❖ **Normal Values** : normal values for various parameters (temperature, precipitation, etc) are defined as mean values calculated for 30 years. These normal values are used as basis and represent the mean situation. They can be specified in 10 daily, monthly, seasonally and yearly level and are used for the trend comparison of 10 days, month, season or year as: rainy decameron, mild winter, cool August etc.

Measurement :

- ❖ **Precipitation**
1 mm = 1 litre/m²

Table Legend :

Tmean : Mean Temperature
TN : Minimum Temperature
TX : Maximum Temperature
RR : Precipitation height(mm)
INST : Sun Duration (hours)

UTC hours (Universal Time Coordinates) in Greece :

- ❖ Winter : UTC hour = local hour - 2
- ❖ Summer : UTC hour = local hour - 3

© Hellenic National Meteorological Service
Reproduction is prohibited without written authorization
14 El.Venizelou 16777
Helliniko, Athens
Greece