



Climatic Bulletin

May 2016

 **Max
temperature**

 **Min
temperature**

 **Mean
temperature**

 **Precipitation**

 **Sunshine
duration**

In May the temperature values varied from very high to relatively low levels while bad weather days alternated with sunny ones.

Between 21-22/5 strong rainfalls and thunderstorms affected Ipirus, Central Macedonia, East Sterea and mainly East Thessaly. Within the above period the heavy precipitation caused severe floods in Magnisia area and in the city of Volos as well.



ΕΘΝΙΚΗ
ΜΕΤΕΩΡΟΛΟΓΙΚΗ
ΥΠΗΡΕΣΙΑ

HELLENIC NATIONAL METEOROLOGICAL SERVICE



Temperature

First Decameron

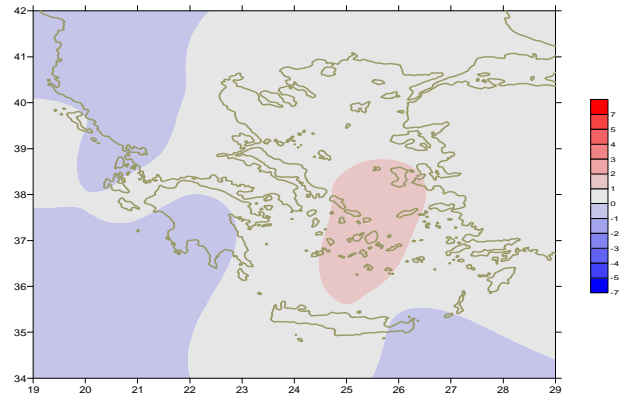
More specific (varied) :

Minimum:

from 3°C to 12°C over north mainland,
from 2°C to 17°C over central mainland,
from 9°C to 18°C over rest parts.

Maximum:

from 20°C to 27°C over north mainland,
from 20°C to 29°C over central mainland,
from 21°C to 26°C over rest parts.



Deviation of mean temperature from normal values

Second Decameron

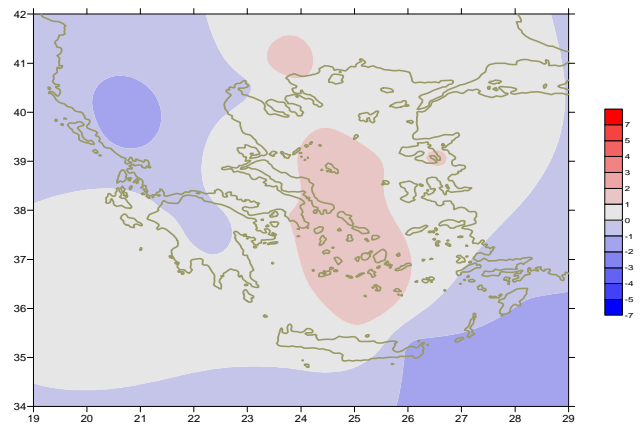
More specific (varied) :

Minimum:

from 6°C to 16°C over north mainland,
from 9°C to 20°C over central mainland,
from 10°C to 24°C over rest parts.

Maximum:

from 14°C to 30°C over north mainland,
from 19°C to 32°C over central mainland,
from 20°C to 35°C over rest parts.



Deviation of maximum temperature from normal values

Third Decameron

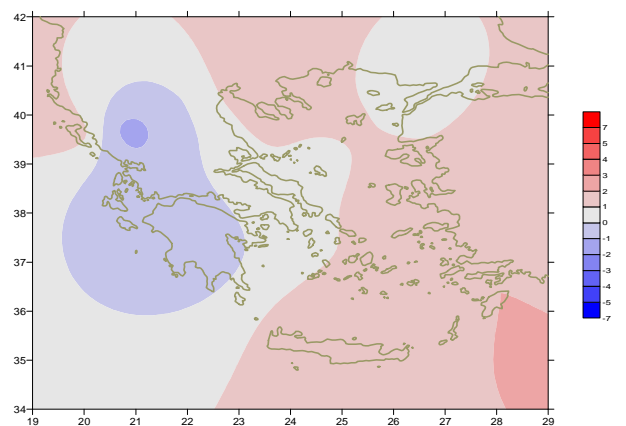
More specific (varied) :

Minimum:

from 10°C to 16°C over north mainland,
from 13°C to 21°C over central mainland,
from 16°C to 23°C over rest parts.

Maximum:

from 15°C to 32°C over north mainland,
from 18°C to 36°C over central mainland,
from 20°C to 35°C over rest parts.



Deviation of minimum temperature from normal values



P r e c i p i t a t i o n

First Decameron

Remarkable rainfalls , thunderstorms and snowfalls over mountaineous parts of central-north mainland.

More specific:

*28mm in Kastoria, 21mm in Ioannina at 2/5,
27mm in Serres, 20mm in Alexandroupoli, 18mm in Thessaloniki.
26mm in Preveza, 18mm in Limnos at 3/5,
24mm in Mitilini, 13mm in Andravida at 4/5,
48mm in Kos, 22mm in Kithira at 5/5,
11mm in Ioannina at 6/5, 10mm in Larisa at 7/5.*

Second Decameron

Local precipitation at the beginning.

More specific:

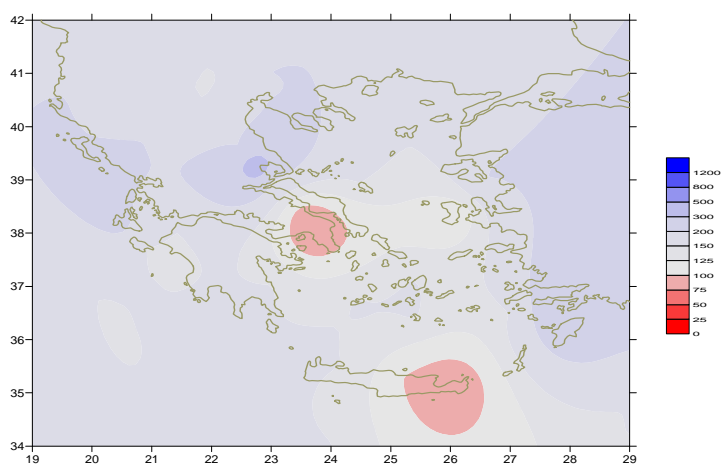
*20mm in Konitsa, 16mm in Timbaki at 12/5,
10mm in Serres at 13/5,
14mm in Kos, 9mm in Rodos , 22mm in Ioannina at 15/5,
14mm in Edessa. 20mm in Kerkira at 20 /5.*

Third Decameron

Strong rainfalls , thunderstorms at the beginning.

More specific:

*108mm in Aghialos, 44mm in Konitsa, 65mm in Edessa,
56mm in Ioannina , 43mm in Preveza, 40mm in Kastoria,
31mm in Thessaloniki, 27mm in Chryssoupoli,
23mm in Argostoli, 34mm in Desfina at 21/5.*



*Deviation of monthly precipitation
height from normal values (%)*

TABLE OF MEAN VALUES

STATION	Longitude	Latitude	Tmean	TX	TN	RR	INST
SERRES	23,53	41,07	19,7	26,4	13,7	79	251
FLORINA	21,40	40,78					
KASTORIA	21,27	40,45	15,8	21,2	8,2	105	242
TRIKALA_IMATHIAS	22,55	40,60					
THESSALONIKI	22,97	40,52	20,3	24,3	13,3	76	290
CHRYSOUPOLI	24,62	40,92	19,1	22,7	13	45	281
ALEXANDROUPOLI	25,95	40,85	18,6	22,5	11,7	52	267
KOZANI	21,83	40,28	16,7	21,1	9,2	51	
KERKYRA	19,92	39,62	19,7	23,1	14,3	80	264
IOANNINA	20,82	39,70	16,6	21,7	8,1	68	187
PREVEZA	20,76	38,91	19,2	22,8	13,6	99	
TRIKALA_THESSALIAS	21,77	39,52					
LARISA	22,45	39,65	20,3	25,8	11,1	66	256
LIMNOS	25,23	39,92	19,2	22,6	13,9	35	308
ARTA	21,00	39,17					
AGHIALOS	22,78	39,21	20,3	24,8	12,5	141	275
MYTILINI	26,60	39,05	21	25	16,3	38	319
VELO	22,77	37,97					
AGRINIO	21,35	38,60					
LAMIA	22,43	38,87					
ANDRAVIDA	21,28	37,92	19,8	24	13	50	279
SKYROS	24,48	38,96	20,2	23,2	15,8	26	274
ARGOSTOLI	20,50	38,12	19,5	22,9	14,1	40	294
ARAXOS	21,42	38,15	20	24	12,7	21	284
TANAGRA	23,57	38,33	21	25,6	12,1	6	273
HIOS	26,13	38,35	20,6	23,6	14,9	9	294
PYRGOS	21,42	37,67					
TRIPOLI	22,40	37,52	16,6	22,4	7,3	49	261
TATOI	23,78	38,10	20,1	24,4	12,1	8	
HELLINIKO	23,73	37,90	21,3	25	16,4	9	274
ELEVSINA	23,55	38,07	21,6	26,2	14,5	13	
ZAKYNTHOS	20,88	37,75	19,9	24	14,1	22	297
SAMOS	26,92	37,68					
ARGOS	22,75	37,63					
KALAMATA	22,02	37,07	19,4	24,5	11,7	34	273
NAXOS	25,37	37,10	20,5	23,3	16,5	16	314
METHONI	21,70	36,82					
MHLOS	24,43	36,73					
SPATA	23,95	37,95	21	24,5	13,3	211	
KOS	27,08	36,80	19,7	22,8	16,7	83	
KYTHIRA	22,98	36,15					
SANTORINI	25,41	36,41	20,7	24,2	17	9	272
SOUDA	24,12	35,55	20,7	24,7	16,2	17	300
RODOS	28,08	36,40	21	23,4	17,8	41	304
MYKONOS	25,35	37,43	19,8	22,7	16,7	8	0
HRAKLEIO	25,18	35,33	21,2	24,2	16,3	13	297
IERAPETRA	25,73	35,02					
SITEIA	26,10	35,21	20	22,5	17,2	1	262
RETHYMNO	24,50	35,36					
TYMPAKI	24,76	35,06					
KASTELI	25,33	35,18	19,9	24,6	13,6	20	247
KARPATOS	27,15	35,42	20,7	23,2	18,1	4	
PAROS	25,13	37,02	20,3	24	16,2	8	300
SYROS	24,95	37,42	20,3	24,4	16,5	3	318
IKARIA	26,35	37,68					

**TABLE OF DEVIATIONS
FROM NORMAL VALUES**

STATION	TMEAN (deviation) (I)	PRECI (deviation %) (II)
SERRES	0.2	162
FLORINA		
THESSALONIKI	0.8	173
ALEXANDROUPOLI	0.3	143
KOZANI	-0.1	89
KERKYRA	0.1	220
IOANNINA	-0.8	102
LARISA	0.7	178
LIMNOS	0.8	150
AGHIALOS	0.8	377
MYTILINI	0.8	179
AGRINIO		
SKYROS	0.9	147
ARGOSTOLI	0	211
ARAXOS	0.2	112
HIOS	1.1	77
HELLINIKO	0.7	63
ZAKYNTHOS	0.1	129
SAMOS		
KALAMATA	-0.4	149
NAXOS	1.1	163
METHONI		
SANTORINI	1.5	150
SOUDA	0.7	131
RODOS	0.5	293
HERAKLIO	0.9	86
SITIA	-0.4	8

(I) deviation of mean temperature from normal values
(II) deviation of monthly precipitation height from normal values %.

Climatic Bulletin

General Description

Precipitation amounts varied higher than normals over most parts, with the exception of eastern-southern Attica and parts Aegean area. The mean temperature varied closely to normal values almost everywhere.

Climatic Parameters :

- ❖ **Normal Values** : normal values for various parameters (temperature, precipitation, etc) are defined as mean values calculated for 30 years. These normal values are used as basis and represent the mean situation. They can be specified in 10 daily, monthly, seasonally and yearly level and are used for the trend comparison of 10 days, month, season or year as: rainy decameron, mild winter, cool August etc.

Measurement :

- ❖ **Precipitation**
1 mm = 1 litre/m²

Table Legend :

Tmean : Mean Temperature
 TN : Minimum Temperature
 TX : Maximum Temperature
 RR : Precipitation height(mm)
 INST : Sun Duration (hours)

UTC hours (Universal Time Coordinates) in Greece :

- ❖ Winter : UTC hour = local hour - 2
- ❖ Summer : UTC hour = local hour - 3

© Hellenic National Meteorological Service
 Reproduction is prohibited without written authorization
 14 El.Venizelou 16777
 Helliniko, Athens
 Greece