




Climatic Bulletin

January 2017

 **Max
temperature**

 **Min
temperature**

 **Mean
temperature**

 **Precipitation**

 **Sunshine
duration**

January, because of the inrush of extremely cold air masses over the greater Greek area (7-13/1), was among the coldest months for last thirty years.

In Particular snowfalls recorded almost everywhere while total frost conditions prevailed locally over northern mainland.

Also the snow amounts were significant not only over eastern mountainous mainland but over the mountains of Creta and Aegean islands.



ΕΘΝΙΚΗ
ΜΕΤΕΩΡΟΛΟΓΙΚΗ
ΥΠΗΡΕΣΙΑ

HELLENIC NATIONAL METEOROLOGICAL SERVICE



Temperature

First 10-day period

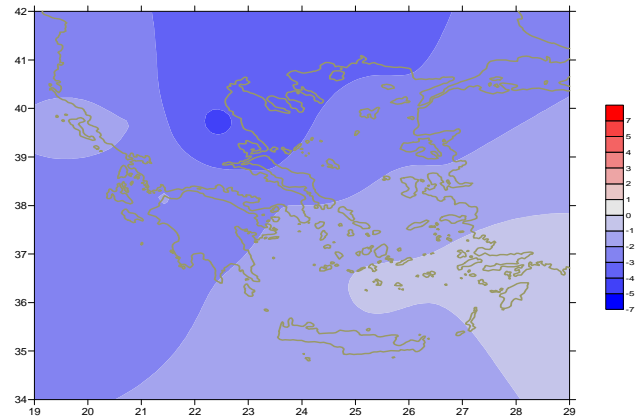
More specific (varied) :

Minimum:

from -19.2°C to 6°C over north mainland,
 from -10°C to 11°C over central mainland,
 from -5°C to 15°C over rest parts.

Maximum:

from -9°C to 11°C over north mainland,
 from -1°C to 19°C over central mainland,
 from -1°C to 17°C over rest parts.



Deviation of mean temperature from normal values

Second 10-day period

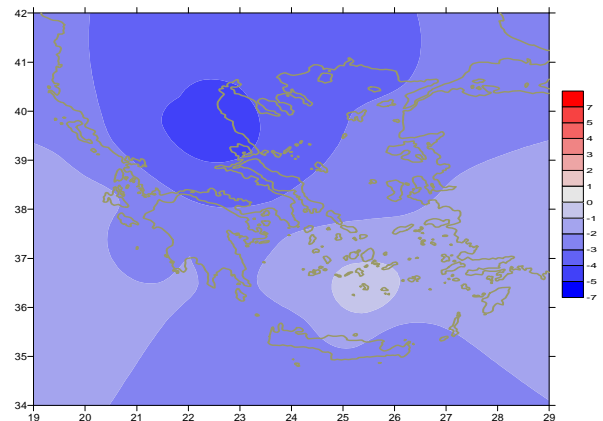
More specific (varied) :

Minimum:

from -22.7°C to 4°C over north mainland,
 from -14.8°C to 8°C over central mainland,
 from -1°C to 13°C over rest parts.

Maximum:

from -8.5°C to 8°C over north mainland,
 from -3°C to 15°C over central mainland,
 from 2°C to 18°C over rest parts.



Deviation of maximum temperature from normal values

Third 10-day period

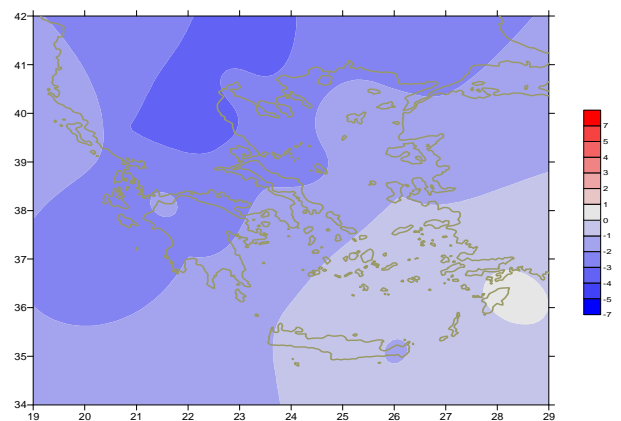
More specific (varied) :

Minimum:

from -15.3°C to 2°C over north mainland,
 From -5°C to 6°C over central mainland,
 from 1°C to 13°C over rest parts.

Maximum:

from -2°C to 10°C over north mainland,
 from 3°C to 12°C over central mainland,
 From 7°C to 16°C over rest parts.



Deviation of minimum temperature from normal values



P r e c i p i t a t i o n

First 10-day period

Remarkable local precipitation.

More specific:

*11mm in Kastelorizo, 23mm in Araxos (4/1),
26mm in Argostoli, 15mm in Tripoli (5/1),
34mm in Alexandroupoli, 20mm in Astros, 63mm in Mitilini,
43mm in Chios, 102mm in Spata, 35mm in Mikonos (6/1).*

30mm in Souda, 20mm in Rodos, 20mm in Syros (7/1),

52mm in Iraklion, 36mm in Souda, 32mm in Kasteli (8/1),

24mm in Skiathos, 44mm in Kos, 22mm in Karpathos (10/1).

Second 10-day period

Significant precipitation (mostly snow) almost everywhere.

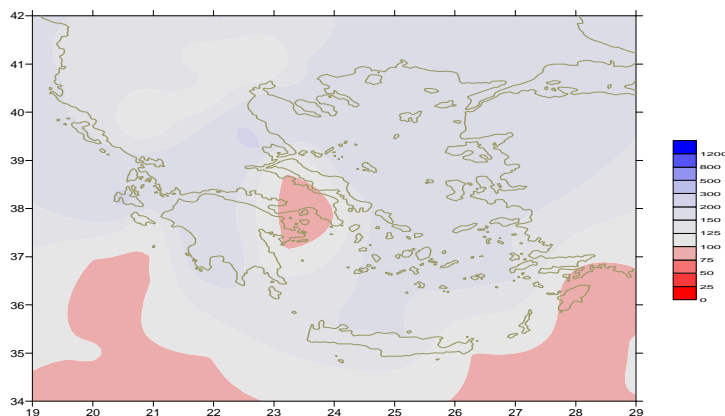
*18mm in Alexandroupoli, 31mm in Limnos, 34mm in Argostoli,
25mm in Tripoli, 15mm in Zakynthos, 27mm in Kalamata (11/1),
36mm in Mitilini (15/1),
20mm in Lamia, 23mm in Mikonos, 17mm in Tripoli (16/1),
34mm in Kerkira, 38mm in Mitilini,
38mm in Adravida, 56mm in Kasos, 24mm in Chios (17/1),
21mm in Thessaloniki, 29mm in Preveza,
86mm in Argostoli, 16mm in Elefsina, 26mm in Zakynthos (18/1),
22mm in Serres, 20mm in Larisa, 18mm in Limnos, 18mm in Skiros (19/1).*

Third 10-day period

Significant precipitation (locally heavy rainfalls mainly over Aegean area and snowfalls over mountainous mainland) in the middle of the period.

More specific:

*17mm in Ioannina, 28mm in Astros, 30mm in Naxos,
39mm in Mikonos, 21mm in Paros (24/1),
41mm in Mitilini, 18mm in Samos, 36mm in Mikonos,
32mm in Rodos, 23mm in Kos (25/1),
34mm in Skiathos (26/1),
34mm in Zakynthos, 15mm in Argostoli, 12mm in Methoni (29/1).*



*Deviation of monthly precipitation
height from normal values (%)*

TABLE OF MEAN VALUES

STATION	Longitude	Lattitude	Tmean	TX	TN	RR	INST
SERRES	23,53	41,07	0,2	4,7	-3,5	40	80
FLORINA	21,40	40,78					
KASTORIA	21,27	40,45	-1,2	2,7	-5,3	58	67
TRIKALA_IMATHIAS	22,55	40,60					
THESSALONIKI	22,97	40,52	1,9	5,1	-1,5	52	95
CHRYSOUPOLI	24,62	40,92	2,7	6,3	-1	53	101
ALEXANDROUPOLI	25,95	40,85	1,7	5,2	-1,2	95	87
KOZANI	21,83	40,28	-1,6	1,7	-4,6	40	
KERKYRA	19,92	39,62	7,8	11,6	4,1	162	92
IOANNINA	20,82	39,70	2,2	6,7	-2,8	94	56
PREVEZA	20,76	38,91	7,6	10,6	4,4	165	
TRIKALA_THESSALIAS	21,77	39,52					
LARISA	22,45	39,65	0,7	4,7	-3,2	61	77
LIMNOS	25,23	39,92	5	7,7	3,1	104	106
ARTA	21,00	39,17					
AGHIALOS	22,78	39,21	3,1	6,6	0	82	105
MYTILINI	26,60	39,05	7,1	9,8	4,7	264	125
VELO	22,77	37,97					
AGRINIO	21,35	38,60					
LAMIA	22,43	38,87					
ANDRAVIDA	21,28	37,92	7,6	11,9	3,6	190	106
SKYROS	24,48	38,96	7,2	9	5,1	124	94
ARGOSTOLI	20,50	38,12	9,1	12,6	5,8	249	126
ARAXOS	21,42	38,15	8,2	11,1	4,5	166	123
TANAGRA	23,57	38,33	4,7	8,3	1,3	56	91
HIOS	26,13	38,35	8	10,4	5	160	128
PYRGOS	21,42	37,67					
TRIPOLI	22,40	37,52	2,7	6,9	-1,4	147	94
TATOI	23,78	38,10	5,3	9,3	1,7	44	
HELLINIKO	23,73	37,90	8,4	11,1	5,2	28	132
ELEYSINA	23,55	38,07	7	10,7	3,5	32	
ZAKYNTHOS	20,88	37,75	8,7	11,9	5,2	156	118
SAMOS	26,92	37,68					
ARGOS	22,75	37,63					
KALAMATA	22,02	37,07	8,1	13,2	3,6	175	136
NAXOS	25,37	37,10	10,5	12,9	8,5	146	133
METHONI	21,70	36,82					
MHLOS	24,43	36,73					
SPATA	23,95	37,95	7,3	10,4	3	52	
KOS	27,08	36,80	9,4	11,8	7,3	130	
KYTHIRA	22,98	36,15					
SANTORINI	25,41	36,41	10,9	13,3	8,6	81	161
SOUDA	24,12	35,55	9,1	12,1	6,7	170	102
RODOS	28,08	36,40	11,4	13,7	8,8	119	162
MYKONOS	25,35	37,43	8,7	10,9	7,1	179	
HRAKLEIO	25,18	35,33	10,7	13,4	8,2	118	116
IERAPETRA	25,73	35,02					
SITEIA	26,10	35,21	10,6	12,6	8,3	65	133
RETHYMNO	24,50	35,36					
TYMPAKI	24,76	35,06					
KASTELI	25,33	35,18	7,9	11,1	4,3	122	119
KARPATOS	27,15	35,42	12,2	14,6	9,9	72	
PAROS	25,13	37,02	9,7	12	7,5	51	147
SYROS	24,95	37,42					
IKARIA	26,35	37,68					

**TABLE OF DEVIATIONS
FROM NORMAL VALUES**

STATION	TMEAN (deviation) (I)	PRECI (deviation %) (II)
SERRES	-3.6	113
FLORINA		
THESSALONIKI	-3.1	141
ALEXANDROUPOLI	-3.1	157
KOZANI	-3.6	102
KERKYRA	-1.8	123
IOANNINA	-2.4	72
LARISA	-4.4	205
LIMNOS	-2.5	144
AGHIALOS	-3.3	170
MYTILINI	-2.2	203
AGRINIO		
SKYROS	-2.7	159
ARGOSTOLI	-2.5	213
ARAXOS	-1.9	172
HIOS	-1.6	137
HELLINIKO	-1.8	62
ZAKYNTHOS	-2.6	104
SAMOS		
KALAMATA	-2.1	155
NAXOS	-1.5	205
METHONI		
SANTORINI	-0.4	126
SOUDA	-1.7	120
RODOS	-0.3	81
HERAKLIO	-1.3	129
SITIA	-1.7	71

(I) deviation of mean temperature from normal values
 (II) deviation of monthly precipitation height from normal values %.

Climatic Bulletin

General Description

Precipitation (mostly snow over central and northern parts) amounts were higher enough than normals in general. The mean temperature varied lower enough than normal values everywhere.

Climatic Parameters :

- ❖ **Normal Values** : normal values for various parameters (temperature, precipitation, etc) are defined as mean values calculated for 30 years. These normal values are used as basis and represent the mean situation. They can be specified in 10 daily, monthly, seasonally and yearly level and are used for the trend comparison of 10 days, month, season or year as: rainy decameron, mild winter, cool August etc.

Measurement :

- ❖ **Precipitation**
1 mm = 1 litre/m²

Table Legend :

Tmean : Mean Temperature
 TN : Minimum Temperature
 TX : Maximum Temperature
 RR : Precipitation height(mm)
 INST : Sun Duration (hours)

UTC hours (Universal Time Coordinates) in Greece :

- ❖ Winter : UTC hour = local hour - 2
- ❖ Summer : UTC hour = local hour - 3

© Hellenic National Meteorological Service
 Reproduction is prohibited without written authorization
 14 El.Venizelou 16777
 Helliniko, Athens
 Greece