



Climatic Bulletin

January 2018

 **Max
temperature**

 **Min
temperature**

 **Mean
temperature**

 **Precipitation**

 **Sunshine
duration**

January characterized by short periods of very strong rainfalls and thunderstorms which affected the southern and eastern parts of Greece.
In parallel heavy snowfalls recorded over the mountains of the above mentioned areas.
Meanwhile strong gale force north winds caused locally severe damages.



ΕΘΝΙΚΗ
ΜΕΤΕΩΡΟΛΟΓΙΚΗ
ΥΠΗΡΕΣΙΑ

HELLENIC NATIONAL METEOROLOGICAL SERVICE



Temperature

First 10-day period

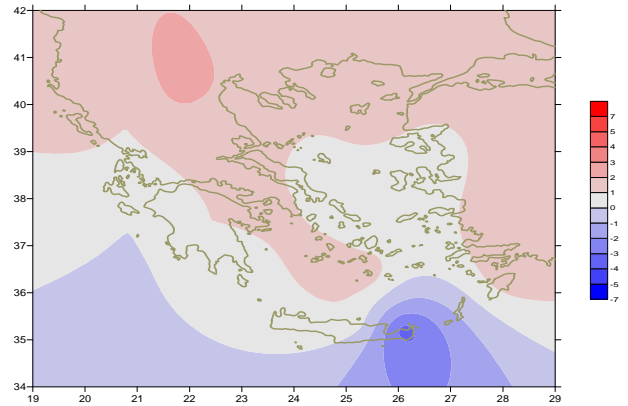
More specific (varied) :

Minimum:

from -6°C to 9°C over north mainland,
 from -4°C to 11°C over central mainland,
 from -1°C to 14°C over rest parts.

Maximum:

from 5°C to 16°C over north mainland,
 from 9°C to 18°C over central mainland,
 from 11°C to 19°C over rest parts.



Deviation of mean temperature from normal values

Second 10-day period

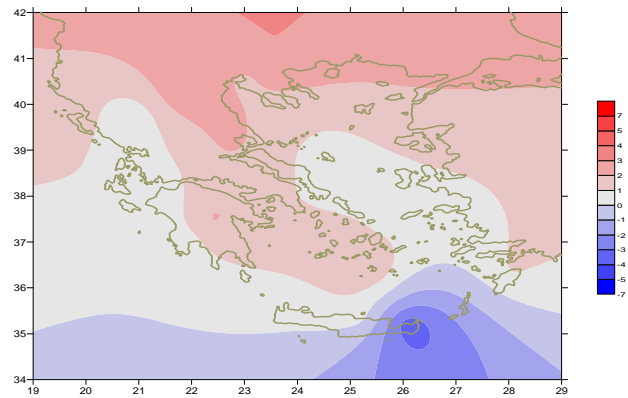
More specific (varied) :

Minimum:

from -7°C to 9°C over north mainland,
 from -4°C to 12°C over central mainland,
 from -3°C to 15°C over rest parts.

Maximum:

from 3°C to 13°C over north mainland,
 from 10°C to 18°C over central mainland,
 from 10°C to 18°C over rest parts.



Deviation of maximum temperature from normal values

Third 10-day period

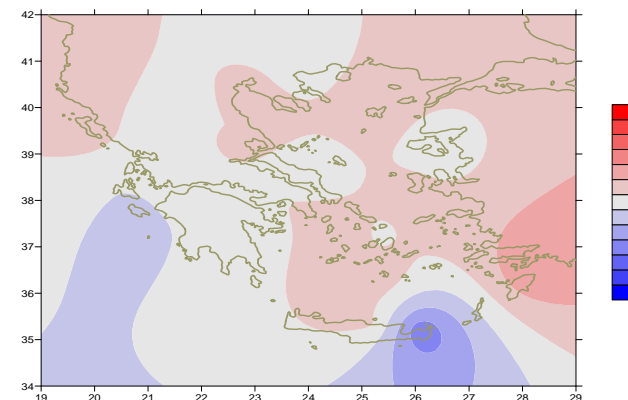
More specific (varied) :

Minimum:

from -9°C to 7°C over north mainland,
 From -5°C to 13°C over central mainland,
 from -2°C to 15°C over rest parts.

Maximum:

from 5°C to 17°C over north mainland,
 from 8°C to 18°C over central mainland,
 From 10°C to 18°C over rest parts.



Deviation of minimum temperature from normal values



Precipitation

First 10-day period

Remarkable precipitation (snowfalls over mountains included) over south parts.

More specific:

19mm in Kerkira, 12mm in Messologi (2/1),
14mm in Limnos, 21mm in Mitilini, 19mm in Skiros, 16mm in Kimi (3/1),
20mm in Kerkira, 20mm in Preveza, 21mm in Adravida, 16mm in Tanagra,
34mm in Chios, 26mm in Samos, 20mm in Kalamata,
20mm in Paros, 19mm in Rodos, 23mm in Mikonos,
15mm in Messologi, 17mm in N. Filadelfia (4/1),
7mm in Kasteli, 10mm in Karpathos (5/1).

Second 10-day period

Significant precipitation almost everywhere.

More specific:

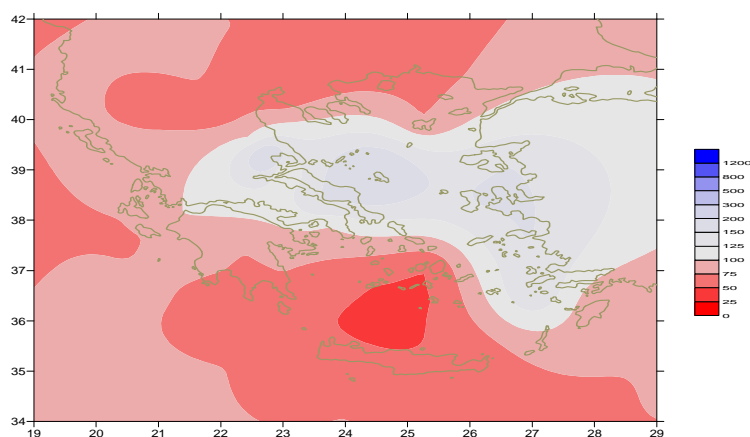
29mm in Astros, 22mm in Samos, 24mm in Kalamata, 27mm in Kos (11/1),
28mm in Skiathos, 23mm in Astros, 62mm in Aghialos,
74mm in Skiros, 24mm in Tanagra, 33mm in Chios, 30mm in Tatoi, 21mm in Hellinikon,
29mm in Elefsina, 41mm in Zakynthos, 41mm in Samos, 48mm in Spata,
30mm in Rodos, 28mm in Nat.Kolimniritio, 42mm in Tithorea, 42mm in Lavrio,
37mm in Kotroni, 43mm in Rafina, 38mm in Shinias (13/1),
31mm in Iraklion, 19mm in Kasteli (14/1),
41mm in Adravida, 20mm in Antirio (15/1),
38mm in Preveza, 33mm in Samos (16/1),
44mm in Kranea (17/1).

Third 10-day period

Significant precipitation locally during the first two days.

More specific:

21mm in Alexandroupoli, 17mm in Adravida,
13mm in Strofades (21/1),
50mm in Mitilini, 31mm in Samos, 25mm in Chios,
32mm in Rodos, 31mm in Kos, 16mm in Kimi,
14mm in Antirio (22/1).



*Deviation of monthly precipitation
height from normal values (%)*

TABLE OF MEAN VALUES

STATION	Longitude	Latitude	Tmean	TX	TN	RR	INST
SERRES	23,53	41,07	5,3	10,7	0,1	11	140
FLORINA	21,40	40,78					
KASTORIA	21,27	40,45	3,9	9,5	-1,5	17	127
TRIKALA_IMATHIAS	22,55	40,60					
THESSALONIKI	22,97	40,52	6,8	10,9	2,6	17	147
CHRYSOUPOLI	24,62	40,92	6,6	11,2	2,2	15	148
ALEXANDROUPOLI	25,95	40,85	6,2	10,7	2,5	36	140
KOZANI	21,83	40,28	4,3	8,7	-0,5	13	
KERKYRA	19,92	39,62	11	15,4	6,7	84	104
IOANNINA	20,82	39,70	5,6	10,4	0,9	68	91
PREVEZA	20,76	38,91	10,2	13,5	7,3	92	
TRIKALA_THESSALIAS	21,77	39,52					
LARISA	22,45	39,65	6,7	11,8	1,5	24	138
LIMNOS	25,23	39,92	9,3	12,2	5,5	48	140
ARTA	21,00	39,17					
AGHIALOS	22,78	39,21	8,1	13	4,1	83	153
MYTILINI	26,60	39,05	10	13,4	7	159	119
VELO	22,77	37,97					
AGRINIO	21,35	38,60					
LAMIA	22,43	38,87					
ANDRAVIDA	21,28	37,92	10,7	14,7	6,5	134	135
SKYROS	24,48	38,96	10,5	12,6	8,3	120	125
ARGOSTOLI	20,50	38,12	12,1	15,2	8,6	74	134
ARAXOS	21,42	38,15	10,7	14	6,7	77	150
TANAGRA	23,57	38,33	8,6	13	3,6	76	132
HIOS	26,13	38,35	10,2	13,5	7,2	136	124
PYRGOS	21,42	37,67					
TRIPOLI	22,40	37,52	6,1	11,5	0,9	61	152
TATOI	23,78	38,10					
HELLINIKO	23,73	37,90	11,3	14,5	8,1	36	178
ELEYSINA	23,55	38,07	10,2	14,1	6,4	56	
ZAKYNTHOS	20,88	37,75	11,3	14,5	7,8	96	125
SAMOS	26,92	37,68	10,7	13,7	8	202	
ARGOS	22,75	37,63					
KALAMATA	22,02	37,07	10,5	16	5,8	86	161
NAXOS	25,37	37,10	12,7	15,4	10,2	32	137
METHONI	21,70	36,82					
MHLOS	24,43	36,73					
SPATA	23,95	37,95	10,6			71	
KOS	27,08	36,80	11,6	14,1	9,5	91	
KYTHIRA	22,98	36,15					
SANTORINI	25,41	36,41	12,9	15,2	10,8	16	160
SOUDA	24,12	35,55	11,5	14,8	8,7	40	153
RODOS	28,08	36,40	13,5	16	11,5	111	168
MYKONOS	25,35	37,43	11,4	13,6	10	56	
HRAKLEIO	25,18	35,33	12,5	15,5	10,1	46	154
IERAPETRA	25,73	35,02					
SITEIA	26,10	35,21	8,9	11,9	6,6	24	120
RETHYMNO	24,50	35,36					
TYMPAKI	24,76	35,06					
KASTEI	25,33	35,18	9,9	13,4	6,7	56	152
KARPATOS	27,15	35,42	13,8	16,3	11,9	62	
PAROS	25,13	37,02	12	14,6	10,1	46	208
SYROS	24,95	37,42					
IKARIA	26,35	37,68					

11,314,58,13617810,214,16,45611,314,57,89612510,713,7820210,5165,88616112,715,410,232137

**TABLE OF DEVIATIONS
FROM NORMAL VALUES**

STATION	TMEAN (deviation) (I)	PRECI (deviation %) (II)
SERRES	1.5	31
FLORINA		
THESSALONIKI	1.8	46
ALEXANDROUPOLI	1.4	60
KOZANI	2.3	33
KERKYRA	1.4	64
IOANNINA	1	52
LARISA	1.6	81
LIMNOS	1.8	66
AGHIALOS	1.7	172
MYTILINI	0.7	122
AGRINIO		
SKYROS	0.6	154
ARGOSTOLI	0.5	63
ARAXOS	0.6	80
HIOS	0.6	117
HELLINIKO	1.1	80
ZAKYNTHOS	0	64
SAMOS	0.4	136
KALAMATA	0.3	76
NAXOS	0.7	45
METHONI		
SANTORINI	1.6	25
SOUDA	0.7	28
RODOS	1.8	75
HERAKLIO	0.5	50
SITIA	-3.4	26

(I) deviation of mean temperature from normal values
 (II) deviation of monthly precipitation height from normal values %.

Climatic Bulletin

General Description

Precipitation amounts were lower than normals over most parts with exception of Thessaly, Evia, central Aegean and east Aegean area where they were higher enough. The mean temperature varied higher than normal values almost everywhere.

Climatic Parameters :

- ❖ **Normal Values** : normal values for various parameters (temperature, precipitation, etc) are defined as mean values calculated for 30 years. These normal values are used as basis and represent the mean situation. They can be specified in 10 daily, monthly, seasonally and yearly level and are used for the trend comparison of 10 days, month, season or year as: rainy decameron, mild winter, cool August etc.

Measurement :

- ❖ **Precipitation**
1 mm = 1 litre/m²

Table Legend :

Tmean : Mean Temperature
 TN : Minimum Temperature
 TX : Maximum Temperature
 RR : Precipitation height(mm)
 INST : Sun Duration (hours)

UTC hours (Universal Time Coordinates) in Greece :

- ❖ Winter : UTC hour = local hour - 2
- ❖ Summer : UTC hour = local hour - 3

© Hellenic National Meteorological Service
 Reproduction is prohibited without written authorization
 14 El.Venizelou 16777
 Helliniko, Athens
 Greece