



Climatic Bulletin

May 2018

 **Max
temperature**

 **Min
temperature**

 **Mean
temperature**

 **Precipitation**

 **Sunshine
duration**

May was a hot month in general. Locally heavy rainfalls and thunderstorms recorded. In particular the population of the downtown of Thessaloniki experienced a flood episode because of a very strong thunderstorm on the 10th of month. In contrast there was lack of precipitation over south Aegean area. Also two significant dust episodes took place between 2-5/5 and 18-24/5. Namely large amounts of dust from northern Africa transferred to Greek area affecting the whole country.



ΕΘΝΙΚΗ
ΜΕΤΕΩΡΟΛΟΓΙΚΗ
ΥΠΗΡΕΣΙΑ

HELLENIC NATIONAL METEOROLOGICAL SERVICE



Temperature

First 10-day period

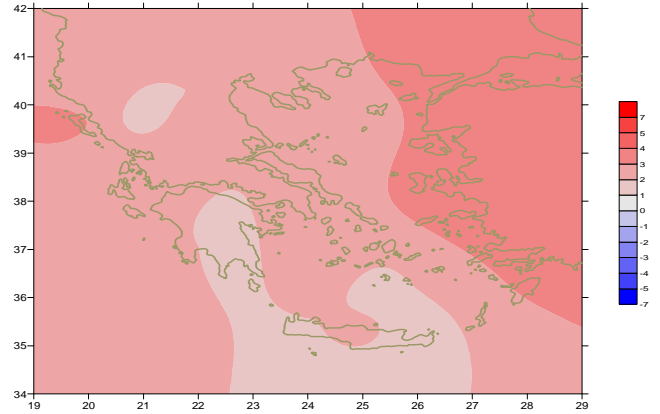
More specific (varied) :

Minimum:

from 8°C to 16°C over north mainland,
 from 10°C to 18°C over central mainland,
 from 9°C to 19°C over rest parts.

Maximum:

from 21°C to 33°C over north mainland,
 from 21°C to 29°C over central mainland,
 from 18°C to 33°C over rest parts.



Deviation of mean temperature from normal values

Second 10-day period

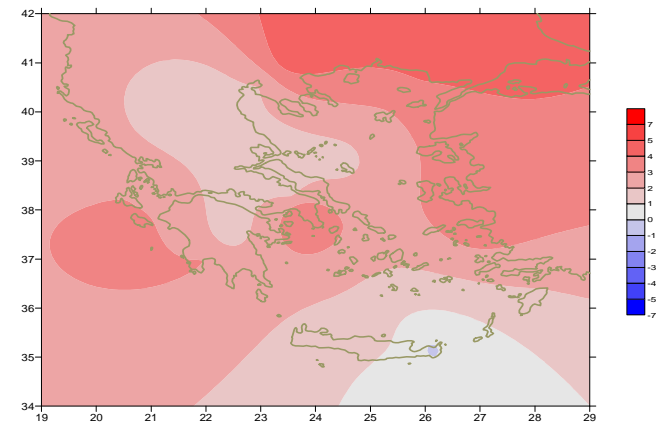
More specific (varied) :

Minimum:

from 5.5°C to 18°C over north mainland,
 from 14°C to 20°C over central mainland,
 from 13°C to 24°C over rest parts.

Maximum:

from 20°C to 31.5°C over north mainland,
 from 22°C to 32°C over central mainland,
 from 21°C to 36°C over rest parts.



Deviation of maximum temperature from normal values

Third 10-day period

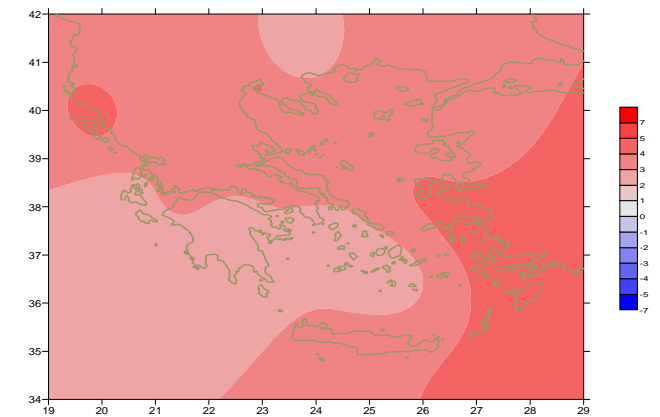
More specific (varied) :

Minimum:

from 8°C to 19°C over north mainland,
 From 12°C to 21°C over central mainland,
 from 15°C to 23°C over rest parts.

Maximum:

from 20°C to 31°C over north mainland,
 from 24°C to 32°C over central mainland,
 from 23°C to 32°C over rest parts.



Deviation of minimum temperature from normal values



Precipitation

First 10-day period

Locally remarkable precipitation.

More specific:

20mm in Ioannina, 15mm in Kastoria, 10mm in Rafina (5/5),
14mm in Florina, 18mm in Thessaloniki, 16mm in Kastoria,
11mm in Konitsa, 28mm in Spata (6/5),
19mm in Hellinikon, 44mm in Elefsina, 52mm in Souda, 24mm in Kalamata,
22mm in Iraklion, 16mm in Tithorea, 15mm in Oreoi (7/5),
27mm in Ioannina (9/5),
34mm in Serres, 34mm in Aghialos, 28mm in Shinias, 26mm in Xanthi,
16mm in Kotroni (10/5).

Second 10-day period

Few precipitation locally over mainland.

More specific:

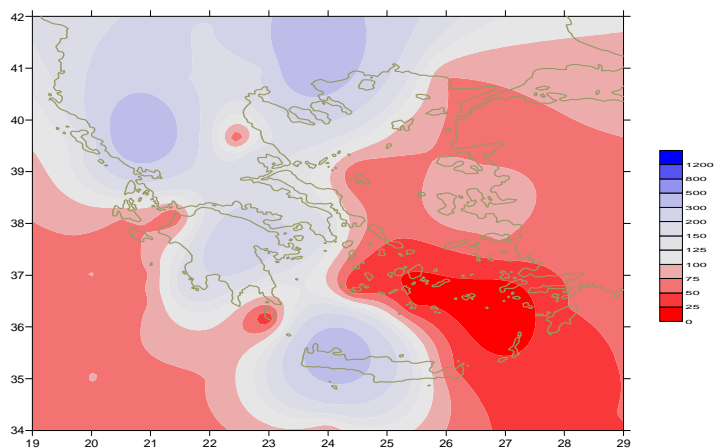
10mm in Lamia (11/5), 9mm in Serres (14/5),
9mm in Furni (15/5), 12mm in Konitsa, 10mm in Kerkira (16/5),
19mm in Serres (18/5),
32mm in Kastoria, 24mm in Tithorea (20/5).

Third 10-day period

Few local precipitation.

More specific:

44mm in Serres, 6mm in Kastoria, 6mm in Kozani (21/5),
19mm in Konitsa, 17mm in Ioannina, 10mm in Furni (24/5),
12mm in Kasteli (26/5),
27mm in Tripoli(31/5).



*Deviation of monthly precipitation
height from normal values (%)*

TABLE OF MEAN VALUES

STATION	Longitude	Latitude	Tmean	TX	TN	RR	INST
SERRES	23,53	41,07	21,9	29,9	14,9	163	260
FLORINA	21,40	40,78					
KASTORIA	21,27	40,45	17,7	23,7	11	113	210
TRIKALA_IMATHIAS	22,55	40,60					
THESSALONIKI	22,97	40,52	22,5	26,5	15,9	65	272
CHRYSOUPOLI	24,62	40,92	22	26	15,7	12	284
ALEXANDROUPOLI	25,95	40,85	21,9	26,6	14,9	20	291
KOZANI	21,83	40,28	18,8	22,8	12,8	84	
KERKYRA	19,92	39,62	22,7	26,2	17,1	38	284
IOANNINA	20,82	39,70	19,1	25,2	13,2	198	207
PREVEZA	20,76	38,91	22,2	26,4	17,1	19	
TRIKALA_THESSALIAS	21,77	39,52					
LARISA	22,45	39,65	22,4	27,7	14,4	6	227
LIMNOS	25,23	39,92	21	24,7	16,6	20	298
ARTA	21,00	39,17					
AGHIALOS	22,78	39,21	21,7	25,6	15,5	69	250
MYTILINI	26,60	39,05	23,6	27,3	18,4	9	308
VELO	22,77	37,97					
AGRINIO	21,35	38,60					
LAMIA	22,43	38,87					
ANDRAVIDA	21,28	37,92	22,5	26,9	15,7	7	267
SKYROS	24,48	38,96	21,5	23,5	18,2	4	244
ARGOSTOLI	20,50	38,12	22	25,6	17	12	295
ARAXOS	21,42	38,15	22,8	26,7	16,6	4	255
TANAGRA	23,57	38,33	22,3	26,8	14,8	28	267
HIOS	26,13	38,35	23,1	26,1	17,7	8	304
PYRGOS	21,42	37,67					
TRIPOLI	22,40	37,52	18,3	24,1	10,2	81	252
TATOI	23,78	38,10	22	26,4	15,4	33	
HELLINIKO	23,73	37,90	23,6	28,1	18,6	24	266
ELEYSINA	23,55	38,07	23,7	28,1	17,9	59	
ZAKYNTHOS	20,88	37,75	22,5	26,5	16,7	11	288
SAMOS	26,92	37,68	24	28,2	18,7	7	
ARGOS	22,75	37,63					
KALAMATA	22,02	37,07	21,8	27,4	14,7	42	274
NAXOS	25,37	37,10					
METHONI	21,70	36,82					
MHLOS	24,43	36,73					
SPATA	23,95	37,95	22,3	26,2	15,9	37	
KOS	27,08	36,80	23	26,5	19,4	2	
KYTHIRA	22,98	36,15					
SANTORINI	25,41	36,41	21	23,6	17,7		299
SOUDA	24,12	35,55	22	25,9	17,8	50	278
RODOS	28,08	36,40	23,8	26,3	20,5	2	320
MYKONOS	25,35	37,43	21,4	24,1	18,7		
HRAKLEIO	25,18	35,33	22,4	24,8	18,5	22	290
IERAPETRA	25,73	35,02					
SITEIA	26,10	35,21	21,9	23,7	19,2	2	182
RETHYMNO	24,50	35,36					
TYMPAKI	24,76	35,06					
KASTEELI	25,33	35,18	21,1	25,7	15,5	32	254
KARPATOS	27,15	35,42	22,8	26	20	65	
PAROS	25,13	37,02	22,2	25,5	19,1	0	286
SYROS	24,95	37,42					
IKARIA	26,35	37,68					

11,314,58,13617810,214,16,45611,314,57,89612510,713,7820210,5165,88616112,715,410,232137

**TABLE OF DEVIATIONS
FROM NORMAL VALUES**

STATION	TMEAN (deviation) (I)	PRECI (deviation %) (II)
SERRES	2.4	334
FLORINA		
THESSALONIKI	3	148
ALEXANDROUPOLI	3.6	55
KOZANI	2	146
KERKYRA	3.1	105
IOANNINA	1.7	296
LARISA	2.8	16
LIMNOS	2.6	86
AGHIALOS	2.2	185
MYTILINI	3.4	43
AGRINIO		
SKYROS	2.2	23
ARGOSTOLI	2.5	63
ARAXOS	3	21
HIOS	3.6	68
HELLINIKO	3	168
ZAKYNTHOS	2.7	65
SAMOS	3.5	45
KALAMATA	2	184
NAXOS		
METHONI		
SANTORINI	1.8	1
SOUDA	2	385
RODOS	3.3	14
HERAKLIO	2.1	145
SITIA	1.5	15

(I) deviation of mean temperature from normal values
 (II) deviation of monthly precipitation height from normal values %.

Climatic Bulletin

General Description

Precipitation amounts were higher than normals over mainland (mainly northwestern parts). In contrast they were lower over Ionian and Aegean islands.
The mean temperature varied higher than normal values in the whole country.

Climatic Parameters :

- ❖ **Normal Values** : normal values for various parameters (temperature, precipitation, etc) are defined as mean values calculated for 30 years. These normal values are used as basis and represent the mean situation. They can be specified in 10 daily, monthly, seasonally and yearly level and are used for the trend comparison of 10 days, month, season or year as: rainy decameron, mild winter, cool August etc.

Measurement :

- ❖ **Precipitation**
1 mm = 1 litre/m²

Table Legend :

Tmean : Mean Temperature
TN : Minimum Temperature
TX : Maximum Temperature
RR : Precipitation height(mm)
INST : Sun Duration (hours)

UTC hours (Universal Time Coordinates) in Greece :

- ❖ Winter : UTC hour = local hour - 2
- ❖ Summer : UTC hour = local hour - 3

© Hellenic National Meteorological Service
Reproduction is prohibited without written authorization
14 El.Venizelou 16777
Helliniko, Athens
Greece