




# Climatic Bulletin

November 2018

 **Max  
temperature**

 **Min  
temperature**

 **Mean  
temperature**

 **Precipitation**

 **Sunshine  
duration**

November started with high temperatures but it had a cold end. From the middle of the period strong rainfalls recorded over eastern and southern parts. Also during last two days significant snowfalls covered mountainous mainland while gale force north winds prevailed over Aegean area.



# Temperature

### First 10-day period

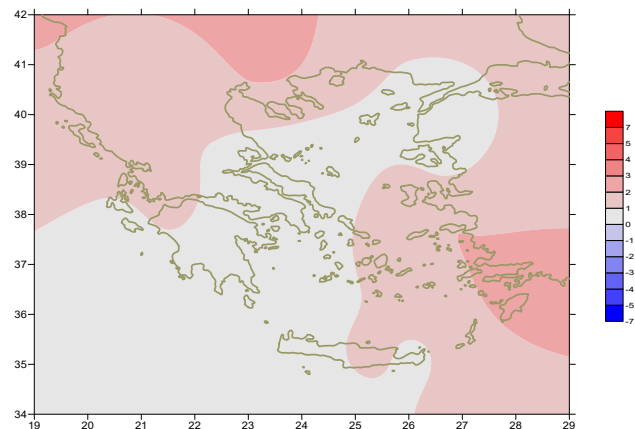
More specific (varied) :

**Minimum:**

from  $-2^{\circ}\text{C}$  to  $14^{\circ}\text{C}$  over north mainland,  
 from  $2^{\circ}\text{C}$  to  $20^{\circ}\text{C}$  over central mainland,  
 from  $7^{\circ}\text{C}$  to  $18^{\circ}\text{C}$  over rest parts.

**Maximum:**

from  $12^{\circ}\text{C}$  to  $26^{\circ}\text{C}$  over north mainland,  
 from  $15^{\circ}\text{C}$  to  $28^{\circ}\text{C}$  over central mainland,  
 from  $17^{\circ}\text{C}$  to  $25^{\circ}\text{C}$  over rest parts.



**Deviation of mean temperature from normal values**

### Second 10-day period

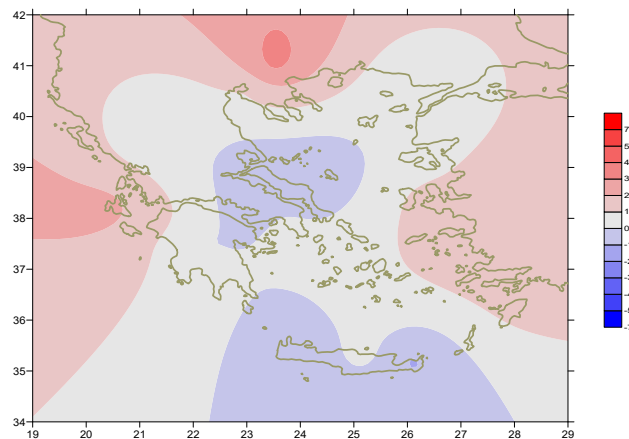
More specific (varied) :

**Minimum:**

from  $-5^{\circ}\text{C}$  to  $10^{\circ}\text{C}$  over north mainland,  
 from  $5^{\circ}\text{C}$  to  $17^{\circ}\text{C}$  over central mainland,  
 from  $10^{\circ}\text{C}$  to  $20^{\circ}\text{C}$  over rest parts.

**Maximum:**

from  $1^{\circ}\text{C}$  to  $20^{\circ}\text{C}$  over north mainland,  
 from  $9^{\circ}\text{C}$  to  $22^{\circ}\text{C}$  over central mainland,  
 from  $12^{\circ}\text{C}$  to  $23^{\circ}\text{C}$  over rest parts.



**Deviation of maximum temperature from normal values**

### Third 10-day period

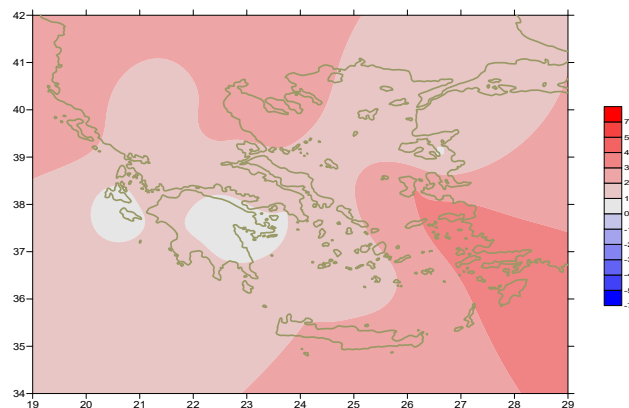
More specific (varied) :

**Minimum:**

from  $-1^{\circ}\text{C}$  to  $13^{\circ}\text{C}$  over north mainland,  
 from  $3^{\circ}\text{C}$  to  $15^{\circ}\text{C}$  over central mainland,  
 from  $9^{\circ}\text{C}$  to  $20^{\circ}\text{C}$  over rest parts.

**Maximum:**

from  $5^{\circ}\text{C}$  to  $20^{\circ}\text{C}$  over north mainland,  
 from  $9^{\circ}\text{C}$  to  $25^{\circ}\text{C}$  over central mainland,  
 from  $10^{\circ}\text{C}$  to  $25^{\circ}\text{C}$  over rest parts.



**Deviation of minimum temperature from normal values**



## Precipitation

### First 10-day period

Local precipitation.

More specific:

9mm in Argostoli (7/11),  
23mm in Kerkira, 24mm in Astros, 28mm in Methoni,  
11mm in National Kolimviritio (8/11),  
31mm in Souda, 11mm in Kasteli, 10mm in Timbaki, 8mm in Oreoi (9/11).

### Second 10-day period

Very high local precipitation.

More specific:

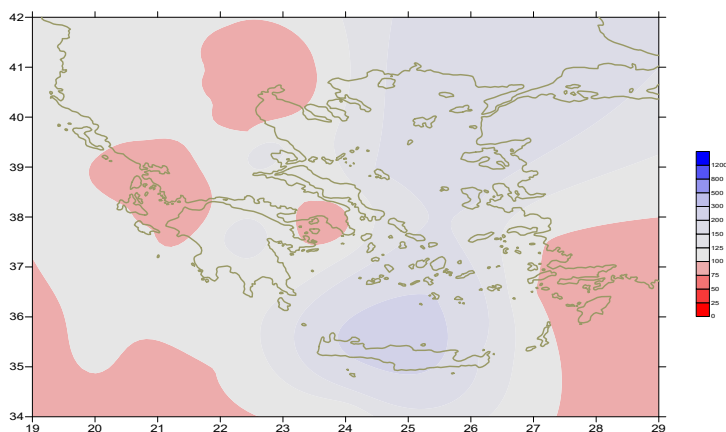
30mm in Gavdos, 20mm in Strofades, 21mm in Fournoi (16/11),  
25mm in Lamia, 22mm in Adravida, 24mm in Zakynthos, 43mm in Souda,  
57mm in Heraklion, 46mm in Kasteli, 26mm in Karpathos, 28mm in Leros,  
41mm in Palaiochora (17/11),  
34mm in Florina, 29mm in Kastoria, 48mm in Kerkira, 36mm in Preveza,  
41mm in Agchialos, 36mm in Mitilini, 54mm in Argostoli, 55mm in Tripoli,  
74mm in Zakynthos, 54mm in Kalamata, 88mm in Methoni, 36mm in Tithorea,  
51mm in Leonidio, 34mm in Antirio (18/11),  
46mm in Soufli (19/11).

### Third 10-day period

Very high amounts of precipitation mainly at the end.

More specific:

46mm in Ioannina, 51mm in Preveza, 38mm in Chios, 30mm in Fournoi (26/11),  
28mm in Soufli, 45mm in Ioannina (27/11),  
58mm in Alexandroupoli, 28mm in Mitilini, 39mm in Samos, 29mm in Ormenio,  
51mm in Soufli (28/11),  
51mm in Leonidio, 27mm in Astipalea, 53mm in Santorini, 38mm in Souda,  
39mm in Syros, 21mm in Mikonos, 22mm in Heraklion, 16mm in Tinos,  
23mm in Tithorea, 30mm in Antikithira (29/11),  
90mm in Kasteli, 49mm in Heraklion (30/11).



**Deviation of monthly precipitation height  
from normal values (%)**

TABLE OF MEAN VALUES

STATION	Longitude	Latitude	Tmean	TX	TN	RR	INST
SERRES	23,53	41,07	11,5	17,1	6,6	46	100
FLORINA	21,40	40,78					
KASTORIA	21,27	40,45	8,2	13,4	3,9	103	95
TRIKALA_IMATHIAS	22,55	40,60					
THESSALONIKI	22,97	40,52	12,8	16,5	9,3	27	112
CHRYSOUPOLI	24,62	40,92	11,7	15,9	8,2	53	112
ALEXANDROUPOLI	25,95	40,85	11,9	15,4	8,5	141	109
KOZANI	21,83	40,28	9,2	13,6	5,5	52	
KERKYRA	19,92	39,62	16,2	20,4	12,7	159	126
IOANNINA	20,82	39,70	10,9	16,1	5,8	158	103
PREVEZA	20,76	38,91	15,9	20,2	12,8	169	
TRIKALA_THESSALIAS	21,77	39,52					
LARISA	22,45	39,65	11,9	16,3	7,9	47	80
LIMNOS	25,23	39,92					
ARTA	21,00	39,17					
AGHIALOS	22,78	39,21	12,7	16,6	9,8	73	84
MYTILINI	26,60	39,05	15	18,1	12,4	146	140
VELO	22,77	37,97					
AGRINIO	21,35	38,60					
LAMIA	22,43	38,87					
ANDRAVIDA	21,28	37,92	14,8	20,6	9,8	102	164
SKYROS	24,48	38,96	15	16,4	13,9	57	98
ARGOSTOLI	20,50	38,12	16,5	21	13,2	139	168
ARAXOS	21,42	38,15	16,4	20,1	11,9	84	177
TANAGRA	23,57	38,33	13	16,9	9,8	54	99
HIOS	26,13	38,35	15,8	18,3	13	109	149
PYRGOS	21,42	37,67					
TRIPOLI	22,40	37,52	10,2	15,5	5,1	148	150
TATOI	23,78	38,10	13,3	17	10,2	57	
HELLINIKO	23,73	37,90	15,9	19,2	13	28	153
ELEYSINA	23,55	38,07	15,5	18,9	12,8	44	
ZAKYNTHOS	20,88	37,75	16,2	20,2	13,3	153	183
SAMOS	26,92	37,68	16,5	19,7	14,2	116	
ARGOS	22,75	37,63					
KALAMATA	22,02	37,07	15,3	21,1	11,2	153	172
NAXOS	25,37	37,10					
METHONI	21,70	36,82					
MHLOS	24,43	36,73					
SPATA	23,95	37,95					
KOS	27,08	36,80	17,2	20,1	15,2	55	
KYTHIRA	22,98	36,15					
SANTORINI	25,41	36,41	16,5	18,5	14,5	92	166
SOUDA	24,12	35,55	16	19	13,9	162	100
RODOS	28,08	36,40	18,8	21,6	16,4	56	176
MYKONOS	25,35	37,43	15,9	18,4	14,8	48	
HRAKLEIO	25,18	35,33	17,9	20,4	15,6	141	137
IERAPETRA	25,73	35,02					
SITEIA	26,10	35,21	17,6	19,3	16,2	68	112
RETHYMNO	24,50	35,36					
TYMPAKI	24,76	35,06					
KASTELI	25,33	35,18	15	18,3	12,5	170	140
KARPATHOS	27,15	35,42	18,7	21,3	16,5	42	
PAROS	25,13	37,02	16,7	18,8	15,1	49	150
SYROS	24,95	37,42	16,4	18,4	15	5	150
IKARIA	26,35	37,68					

11,314,58,13617810,214,16,45611,314,57,89612510,713,7820210,5165,88616112,715,410,232137

**TABLE OF DEVIATIONS  
FROM NORMAL VALUES**

STATION	TMEAN ( deviation ) (I)	PRECI (deviation % ) (II)
SERRES	2.4	86
FLORINA		
THESSALONIKI	1.9	47
ALEXANDROUPOLI	0.9	186
KOZANI	1.2	87
KERKYRA	2	88
IOANNINA	1.2	96
LARISA	1.1	81
LIMNOS		
AGHIALOS	0.6	116
MYTILINI	0.5	156
AGRINIO		
SKYROS	0.3	106
ARGOSTOLI	0.8	86
ARAXOS	1.8	63
HIOS	2	132
HELLINIKO	0.5	55
ZAKYNTHOS	0.4	96
SAMOS	2	105
KALAMATA	0.6	108
NAXOS		
METHONI		
SANTORINI	1.1	172
SOUDA	0.4	223
RODOS	2.4	63
HERAKLIO	1.3	240
SITIA	0.8	112

(I) deviation of mean temperature from normal values  
 (II) deviation of monthly precipitation height from normal values %.

# Climatic Bulletin

## General Description

Precipitation amounts were higher enough than normal values over most parts of east and southern islands while they were lower over rest parts.  
The mean temperature varied higher than normals almost everywhere.

### Climatic Parameters :

- ❖ **Normal Values** : normal values for various parameters (temperature, precipitation, etc) are defined as mean values calculated for 30 years. These normal values are used as basis and represent the mean situation. They can be specified in 10 daily, monthly, seasonally and yearly level and are used for the trend comparison of 10 days, month, season or year as: rainy decameron, mild winter, cool August etc.

### Measurement :

- ❖ **Precipitation**  
1 mm = 1 litre/m<sup>2</sup>

### Table Legend :

Tmean : Mean Temperature  
TN : Minimum Temperature  
TX : Maximum Temperature  
RR : Precipitation height(mm)  
INST : Sun Duration (hours)

### UTC hours (Universal Time Coordinates) in Greece :

- ❖ Winter : UTC hour = local hour - 2
- ❖ Summer : UTC hour = local hour - 3

© Hellenic National Meteorological Service  
Reproduction is prohibited without written authorization  
14 El.Venizelou 16777  
Helliniko, Athens  
Greece