



Climatic Bulletin

February 2019

 **Max
temperature**

 **Min
temperature**

 **Mean
temperature**

 **Precipitation**

 **Sunshine
duration**

February started with relatively high values of temperature but they declined rapidly till the end. In parallel the prevalence of gale or strong gale force winds caused damages to networks and infrastructures. Meanwhile strong-long lasting rainfalls caused severe floods and landslides over eastern and southern island parts. Specifically the island of Crete affected by huge amounts of precipitation which had as a result the local devastation of the landscape. But the most tragic result was the lost of human lives.



Temperature

First 10-day period

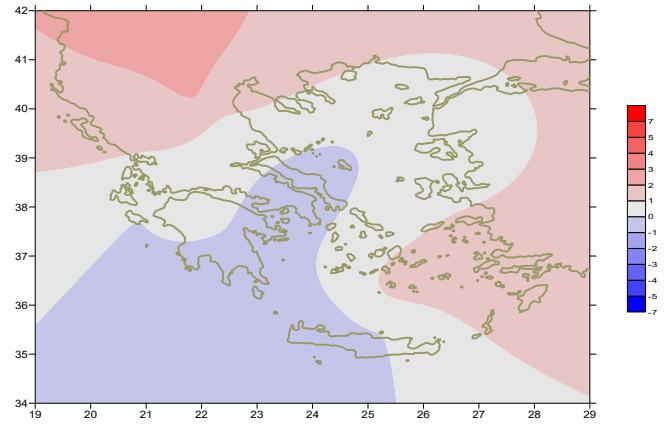
More specific (varied) :

Minimum:

from -5°C to 11°C over north mainland,
 from -3°C to 14°C over central mainland,
 from 1°C to 16°C over rest parts.

Maximum:

from 5°C to 18°C over north mainland,
 from 9°C to 21°C over central mainland,
 from 10°C to 21°C over rest parts.



Deviation of mean temperature from normal values

Second 10-day period

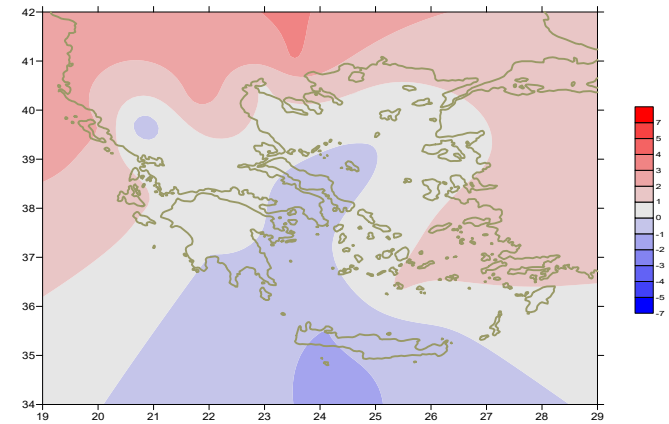
More specific (varied) :

Minimum:

from -7°C to 11°C over north mainland,
 from -1°C to 15°C over central mainland,
 from 0°C to 15°C over rest parts.

Maximum:

from 3°C to 19°C over north mainland,
 from 5°C to 18°C over central mainland,
 from 8°C to 18°C over rest parts.



Deviation of maximum temperature from normal values

Third 10-day period

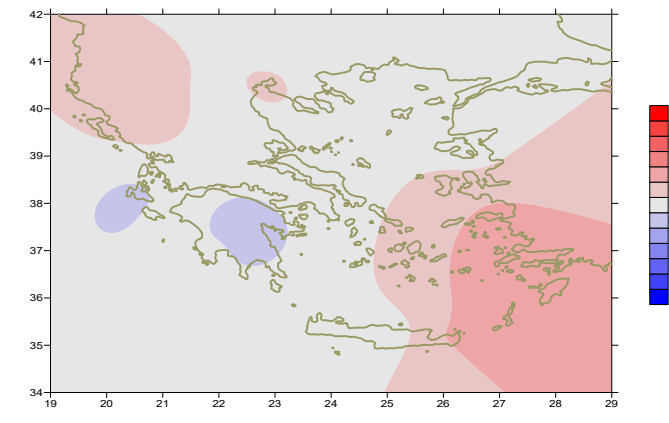
More specific (varied) :

Minimum:

from -11°C to 7°C over north mainland,
 from -4°C to 9°C over central mainland,
 from 0°C to 13°C over rest parts.

Maximum:

from -3°C to 18°C over north mainland,
 from 3°C to 19°C over central mainland,
 from 3°C to 20°C over rest parts.



Deviation of minimum temperature from normal values



Precipitation

First 10-day period

Locally large amounts of precipitation.

More specific:

35mm in Astros, 42mm in Tanagra, 40mm in Hellinikon, 53mm in Skyros, 51mm in Tripoli, 42mm in Tatoi, 43mm in Kalamata, 34mm in Leonidio, 48mm in Spata, 44mm in Nat. Kolimviritio, 44mm in Oreoi (6/2), 45mm in Milos, 47mm in Kos, 41mm in Souda (7/2).

Second 10-day period

Locally large amounts of precipitation.

More specific:

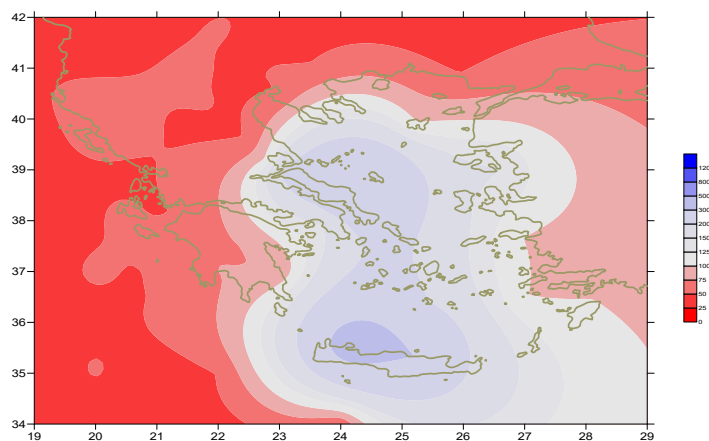
61mm in Mitilini, 41mm in Elefsina, 27mm in Samos, 34mm in Kasteli, 20mm in Tibaki (13/2), 85mm in Souda, 23mm in Rodos, 33mm in Paros (14/2), 25mm in Heraklion, 39mm in Kasteli (16/2), 47mm in Heraklion, 75mm in Kasteli (17/2).

Third 10-day period

Locally large amounts of precipitation.

More specific:

33mm in Skiros, 49mm in Chios, 19mm in Zakynthos (23/2), 53mm in Kos, 63mm in Mikonos (24/2), 116mm in Souda, 46mm in Heraklion, 25mm in Santorini, 34mm in Karpathos, 30mm in Kasteli, 27mm in Leros, 25mm in Paros, 65mm in Gavdos, 37mm in Palaiochora (25/2), 15mm in Astipalea, 25mm in Souda, 20mm in Oreoi (26/2).



**Deviation of monthly precipitation height
from normal values (%)**

TABLE OF MEAN VALUES

STATION	Longitude	Latitude	Tmean	TX	TN	RR	INST
SERRES	23,53	41,07	7,9	13,7	1,6	10	130
FLORINA	21,40	40,78					
KASTORIA	21,27	40,45	5,2	10,9	-1,3		142
TRIKALA_IMATHIAS	22,55	40,60					
THESSALONIKI	22,97	40,52	8,2	11,9	3,6	4	141
CHRYSOUPOLI	24,62	40,92	7,4	11,8	3,3	14	128
ALEXANDROUPOLI	25,95	40,85	6,7	10,9	2,2	11	141
KOZANI	21,83	40,28	5,7	10,2	0,3	3	
KERKYRA	19,92	39,62	11,9	16,4	6,9	14	143
IOANNINA	20,82	39,70	7,4	11,2	2,7		133
PREVEZA	20,76	38,91	11,5	15,3	7,6	6	
TRIKALA_THESSALIAS	21,77	39,52					
LARISA	22,45	39,65	7,5	13	2	11	126
LIMNOS	25,23	39,92	8,4	11	5,6	34	137
ARTA	21,00	39,17					
AGHIALOS	22,78	39,21	8,2	12,8	4,2	39	142
MYTILINI	26,60	39,05	10,3	13,3	7,6	120	158
VELO	22,77	37,97					
AGRINIO	21,35	38,60					
LAMIA	22,43	38,87					
ANDRAVIDA	21,28	37,92	10,2	15,4	5	12	180
SKYROS	24,48	38,96	10	12,4	8,3	138	142
ARGOSTOLI	20,50	38,12	12	15,8	8,4	18	184
ARAXOS	21,42	38,15	11,1	15	6,9	21	187
TANAGRA	23,57	38,33	7,8	12,3	4,1	102	114
HIOS	26,13	38,35	10,6	13,5	7,7	97	131
PYRGOS	21,42	37,67					
TRIPOLI	22,40	37,52	5,7	10,6	0,8	67	140
TATOI	23,78	38,10	7,7	11,9	4,1	77	
HELLINIKO	23,73	37,90	10,3	13,7	7,6	67	150
ELEYSINA	23,55	38,07	10,2	14	6,9	75	
ZAKYNTHOS	20,88	37,75	11,5	15,3	8,5	36	184
SAMOS	26,92	37,68	11,7	14,9	8,8	57	
ARGOS	22,75	37,63					
KALAMATA	22,02	37,07	10,6	15,6	5,9	58	163
NAXOS	25,37	37,10					
METHONI	21,70	36,82					
MHLOS	24,43	36,73					
SPATA	23,95	37,95	9,2	12,5	5	104	
KOS	27,08	36,80	12,4	14,8	10,4	175	
KYTHIRA	22,98	36,15					
SANTORINI	25,41	36,41	12,5	14,5	10,8	91	132
SOUDA	24,12	35,55	10,7	13,9	8,3	407	105
RODOS	28,08	36,40	13,5	16,2	11	110	161
MYKONOS	25,35	37,43	11,3	13,7	9,9	150	
HRAKLEIO	25,18	35,33	12,1	14,8	9,6	201	112
IERAPETRA	25,73	35,02					
SITEIA	26,10	35,21	13,3	15,2	11,4	98	77
RETHYMNO	24,50	35,36					
TYMPAKI	24,76	35,06					
KASTELI	25,33	35,18	9,2	12,7	6,2	277	110
KARPATHOS	27,15	35,42					
PAROS	25,13	37,02	11,8	14,2	10	159	130
SYROS	24,95	37,42	11,6	14	9,6	44	144
IKARIA	26,35	37,68					

11,314,58,13617810,214,16,45611,314,57,89612510,713,7820210,5165,88616112,715,410,232137

**TABLE OF DEVIATIONS
FROM NORMAL VALUES**

STATION	TMEAN (deviation) (I)	PRECI (deviation %) (II)
SERRES	1.6	24
FLORINA		
THESSALONIKI	1.5	10
ALEXANDROUPOLI	0.9	18
KOZANI	2.1	10
KERKYRA	1.6	10
IOANNINA	1.3	0
LARISA	0.7	32
LIMNOS	0.5	77
AGHIALOS	0.6	77
MYTILINI	0.5	124
AGRINIO		
SKYROS	-0.2	218
ARGOSTOLI	0.3	16
ARAXOS	0.6	25
HIOS	0.8	116
HELLINIKO	-0.2	140
ZAKYNTHOS	0	32
SAMOS	1.7	55
KALAMATA	-0.1	57
NAXOS		
METHONI		
SANTORINI	1.3	150
SOUDA	-0.4	362
RODOS	1.5	94
HERAKLIO	-0.1	260
SITIA	0.9	130

(I) deviation of mean temperature from normal values
 (II) deviation of monthly precipitation height from normal values %.

Climatic Bulletin

General Description

Precipitation amounts were higher than normal values over Aegean area (mainly over the islands of Crete and Evia) while in contrast they were lower enough over west, central and north parts of Greece. The mean temperature varied lightly higher than normals over north parts.

Climatic Parameters :

- ❖ **Normal Values** : normal values for various parameters (temperature, precipitation, etc) are defined as mean values calculated for 30 years. These normal values are used as basis and represent the mean situation. They can be specified in 10 daily, monthly, seasonally and yearly level and are used for the trend comparison of 10 days, month, season or year as: rainy decameron, mild winter, cool August etc.

Measurement :

- ❖ **Precipitation**
1 mm = 1 litre/m²

Table Legend :

Tmean : Mean Temperature
 TN : Minimum Temperature
 TX : Maximum Temperature
 RR : Precipitation height(mm)
 INST : Sun Duration (hours)

UTC hours (Universal Time Coordinates) in Greece :

- ❖ Winter : UTC hour = local hour - 2
- ❖ Summer : UTC hour = local hour - 3

© Hellenic National Meteorological Service
 Reproduction is prohibited without written authorization
 14 El.Venizelou 16777
 Helliniko, Athens
 Greece