



Climatic Bulletin

May 2019

 **Max
temperature**

 **Min
temperature**

 **Mean
temperature**

 **Precipitation**

 **Sunshine
duration**

May was a relatively cold month for the first few days but it became hot gradually from the middle of the period. In parallel two significant dust episodes from Africa took place at 5/5 and 17/5. Also heavy thunderstorms with hail affected locally the northwestern parts of Attica .



ΕΘΝΙΚΗ
ΜΕΤΕΩΡΟΛΟΓΙΚΗ
ΥΠΗΡΕΣΙΑ

HELLENIC NATIONAL METEOROLOGICAL SERVICE



Temperature

First 10-day period

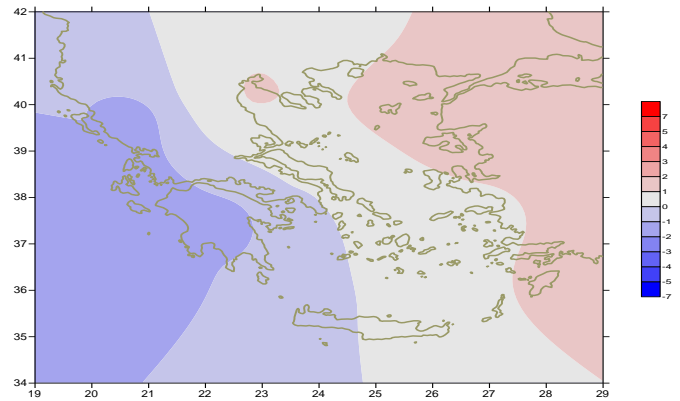
More specific (varied) :

Minimum:

from 0°C to 14°C over north mainland,
 from 3°C to 16°C over central mainland,
 from 9°C to 17°C over rest parts.

Maximum:

from 13°C to 27°C over north mainland,
 from 18°C to 28°C over central mainland,
 from 18°C to 23°C over rest parts.



Deviation of mean temperature from normal values

Second 10-day period

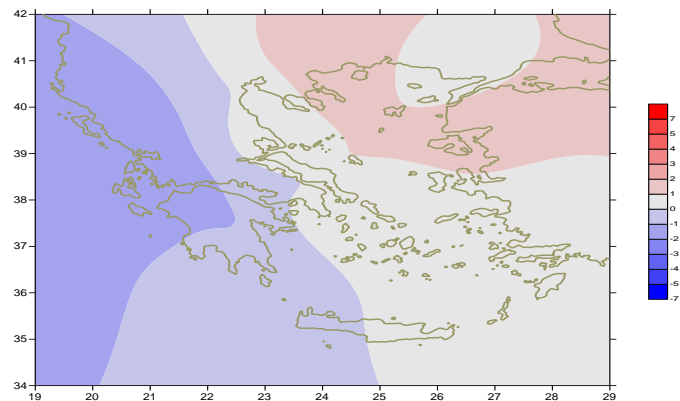
More specific (varied) :

Minimum:

from 3°C to 18°C over north mainland,
 from 6°C to 19°C over central mainland,
 from 12°C to 22°C over rest parts.

Maximum:

from 13°C to 30°C over north mainland,
 from 20°C to 31°C over central mainland,
 from 20°C to 30°C over rest parts.



Deviation of maximum temperature from normal values

Third 10-day period

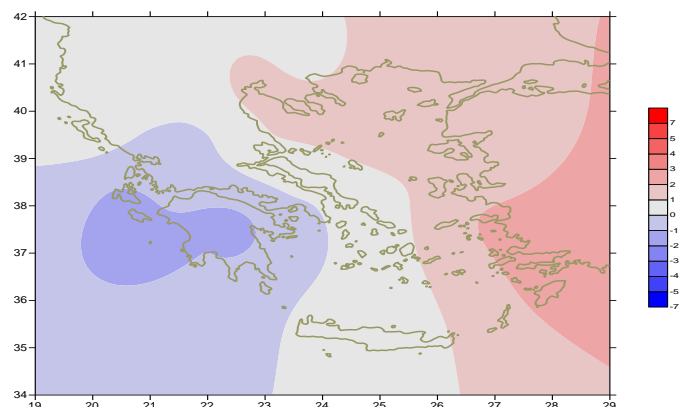
More specific (varied) :

Minimum:

from 5°C to 19°C over north mainland,
 from 7°C to 19°C over central mainland,
 from 13°C to 23°C over rest parts.

Maximum:

from 21°C to 32°C over north mainland,
 from 21°C to 33°C over central mainland,
 from 23°C to 34°C over rest parts.



Deviation of minimum temperature from normal values



Precipitation

First 10-day period

Locally significant amounts of precipitation.

More specific:

7mm in Argostoli, 4mm in Zakynthos, 4mm in Sitia (1/5),
9mm in Serres, 7mm in Edessa, 7mm in Ioannina, 6mm in Icaria (5/5),
7mm in Doxato, 9mm in Preveza (6/5),
7mm in Alexandroupoli, 12mm in Ormenio, 12mm in Soufli, 10mm in Kavala,
7mm in Araxos, 9mm in Tanagra (7/5),
8mm in Soufli (10/5).

Second 10-day period

Locally high amounts of precipitation.

More specific:

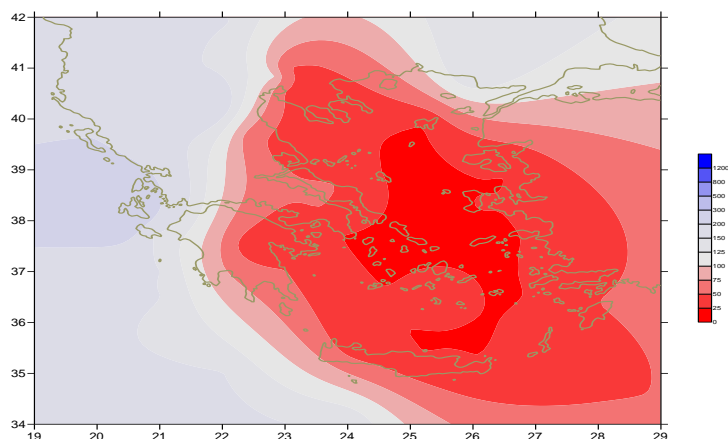
29mm in Ioannina, 28mm in Kastoria, 27mm in Konitsa,
15mm in Florina, 12mm in Kozani, 27mm in Preveza,
32mm in Kerkira, 31mm in Argostoli, 59mm in Othonoi (13/5),
16mm in Kastoria, 22mm in Konitsa, 17mm in Ioannina (14/5),
5mm in Kalamata, 6mm in Tripoli (17/5).

Third 10-day period

Locally significant amounts of precipitation.

More specific:

23mm in Alexandroupoli, 11mm in Soufli, 10mm in Thessaloniki,
12mm in Doxato, 25mm in Kozani (24/5),
10mm in Kastoria, 8mm in Kerkira (27/5),
37mm in Florina, 20mm in Kozani (32/5).



**Deviation of monthly precipitation height
from normal values (%)**

TABLE OF MEAN VALUES

STATION	Longitude	Latitude	Tmean	TX	TN	RR	INST
SERRES	23,53	41,07	20,1	27,1	11,6	21	260
FLORINA	21,40	40,78					
KASTORIA	21,27	40,45	15,5	21	7,7	77	223
TRIKALA_IMATHIAS	22,55	40,60					
THESSALONIKI	22,97	40,52	20,6	24,6	13,7	18	272
CHRYSOUPOLI	24,62	40,92	19,2	22,7	13,4	23	261
ALEXANDROUPOLI	25,95	40,85	19,4	23	12,9	47	269
KOZANI	21,83	40,28	17,3	21,4	9,5	108	
KERKYRA	19,92	39,62	18,6	21,9	13,7	58	254
IOANNINA	20,82	39,70	15,9	21,3	9,6	90	200
PREVEZA	20,76	38,91	17,9	21,6	13,2	66	
TRIKALA_THESSALIAS	21,77	39,52					
LARISA	22,45	39,65	20,4	25,8	11	22	251
LIMNOS	25,23	39,92	19,6	22,9	14,4	3	268
ARTA	21,00	39,17					
AGHIALOS	22,78	39,21	20	24,6	12,7	12	273
MYTILINI	26,60	39,05	21,6	25,4	16,2	3	293
VELO	22,77	37,97					
AGRINIO	21,35	38,60					
LAMIA	22,43	38,87					
ANDRAVIDA	21,28	37,92					
SKYROS	24,48	38,96	20	22,9	16,1	2	262
ARGOSTOLI	20,50	38,12	18,2	21,5	13,6	46	265
ARAXOS	21,42	38,15	18,6	22,2	12,2	19	263
TANAGRA	23,57	38,33	20,1	24,9	11,3	11	270
HIOS	26,13	38,35	20,4	23,7	14,5		260
PYRGOS	21,42	37,67					
TRIPOLI	22,40	37,52	15,6	21,6	6,7	13	286
TATOI	23,78	38,10	19,3	23,7	10,8	6	
HELLINIKO	23,73	37,90	20,4	24,4	15,6	3	285
ELEYSINA	23,55	38,07	20,9	24,7	14,9	2	
ZAKYNTHOS	20,88	37,75	18,6	22,1	13,2	23	276
SAMOS	26,92	37,68	21,2	24,7	16,3	4	
ARGOS	22,75	37,63					
KALAMATA	22,02	37,07	18,8	23,7	11,4	15	279
NAXOS	25,37	37,10					
METHONI	21,70	36,82					
MHLOS	24,43	36,73					
SPATA	23,95	37,95	13,6	17,4	7,5		
KOS	27,08	36,80	20,5	24,2	17,1	4	
KYTHIRA	22,98	36,15					
SANTORINI	25,41	36,41	19,8	22,7	16,4	2	257
SOUDA	24,12	35,55	19,5	23,8	15	4	270
RODOS	28,08	36,40	21,7	25,1	18,2	6	318
MYKONOS	25,35	37,43	19,6	22,6	16,3		
HRAKLEIO	25,18	35,33	20,7	23,9	15,2	1	280
IERAPETRA	25,73	35,02					
SITEIA	26,10	35,21					
RETHYMNO	24,50	35,36					
TYMPAKI	24,76	35,06					
KASTELI	25,33	35,18	19,5	24,4	12,6	4	263
KARPATIOS	27,15	35,42	20,5	23,6	17,2		
PAROS	25,13	37,02	19,8	23,2	15,3	2	281
SYROS	24,95	37,42	21,9	23,3	16,9	2	299
IKARIA	26,35	37,68					

11,314,58,13617810,214,16,45611,314,57,89612510,713,7820210,5165,88616112,715,410,232137

**TABLE OF DEVIATIONS
FROM NORMAL VALUES**

STATION	TMEAN	PRECI
	(deviation)	(deviation %)
	(I)	(II)
SERRES	0.6	43
FLORINA		
THESSALONIKI	1.1	41
ALEXANDROUPOLI	1.1	130
KOZANI	0.5	188
KERKYRA	-1	160
IOANNINA	-1.5	135
LARISA	0.8	59
LIMNOS	1.2	13
AGHIALOS	0.5	32
MYTILINI	1.4	14
AGRINIO		
SKYROS	0.7	11
ARGOSTOLI	-1.3	242
ARAXOS	-1.2	102
HIOS	0.9	1
HELLINIKO	-0.2	21
ZAKYNTHOS	-1.2	135
SAMOS	0.7	26
KALAMATA	-1	66
NAXOS		
METHONI		
SANTORINI	0.6	33
SOUDA	-0.5	31
RODOS	1.2	43
HERAKLIO	0.4	7
SITIA		

(I) deviation of mean temperature from normal values

(II) deviation of monthly precipitation height from normal values %.

Climatic Bulletin

General Description

Precipitation amounts were higher than normal values over Ionian sea area and locally over west and north mainland while they were lower enough over rest parts.
The mean temperature varied closely the normal values over most parts.

Climatic Parameters :

- ❖ **Normal Values** : normal values for various parameters (temperature, precipitation, etc) are defined as mean values calculated for 30 years. These normal values are used as basis and represent the mean situation. They can be specified in 10 daily, monthly, seasonally and yearly level and are used for the trend comparison of 10 days, month, season or year as: rainy decameron, mild winter, cool August etc.

Measurement :

- ❖ **Precipitation**
1 mm = 1 litre/m²

Table Legend :

Tmean : Mean Temperature
TN : Minimum Temperature
TX : Maximum Temperature
RR : Precipitation height(mm)
INST : Sun Duration (hours)

UTC hours (Universal Time Coordinates) in Greece :

- ❖ Winter : UTC hour = local hour - 2
- ❖ Summer : UTC hour = local hour - 3

© Hellenic National Meteorological Service
Reproduction is prohibited without written authorization
14 El.Venizelou 16777
Helliniko, Athens
Greece