




# Climatic Bulletin

June 2019

 **Max  
temperature**

 **Min  
temperature**

 **Mean  
temperature**

 **Precipitation**

 **Sunshine  
duration**

June was warmer than average over the whole country. However, despite the significant local rainfalls and thunderstorms which recorded over mainland the mean precipitation exceeded normal values only in a few parts of it.

Also near gale to gale force winds prevailed over eastern parts during last week.



# Temperature

### First 10-day period

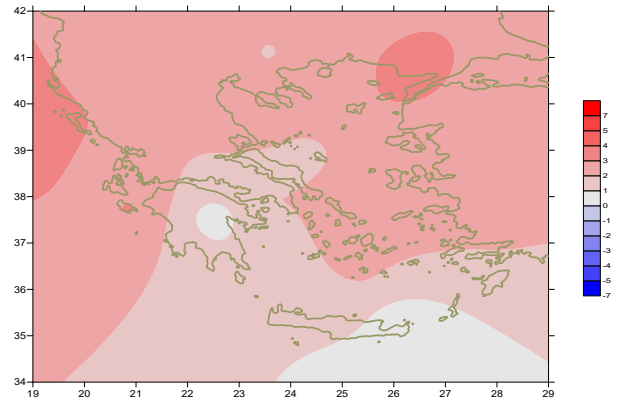
More specific (varied) :

**Minimum:**

from 5°C to 24°C over north mainland,  
 from 8°C to 24°C over central mainland,  
 from 15°C to 26°C over rest parts.

**Maximum:**

from 15°C to 36°C over north mainland,  
 from 25°C to 37°C over central mainland,  
 from 23°C to 33°C over rest parts.



**Deviation of mean temperature from normal values**

### Second 10-day period

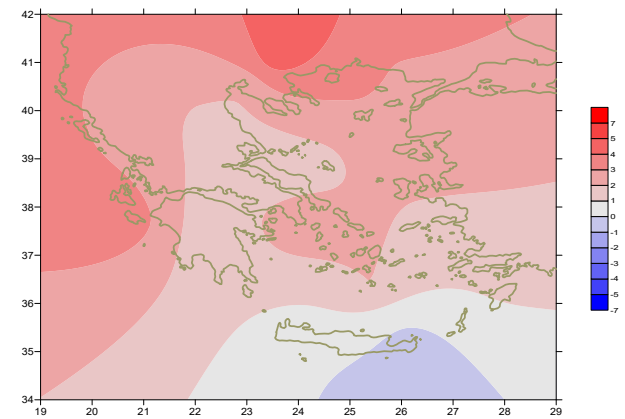
More specific (varied) :

**Minimum:**

from 11°C to 25°C over north mainland,  
 from 14°C to 25°C over central mainland,  
 from 18°C to 27°C over rest parts.

**Maximum:**

from 28°C to 39°C over north mainland,  
 from 27°C to 37°C over central mainland,  
 from 26°C to 33°C over rest parts.



**Deviation of maximum temperature from normal values**

### Third 10-day period

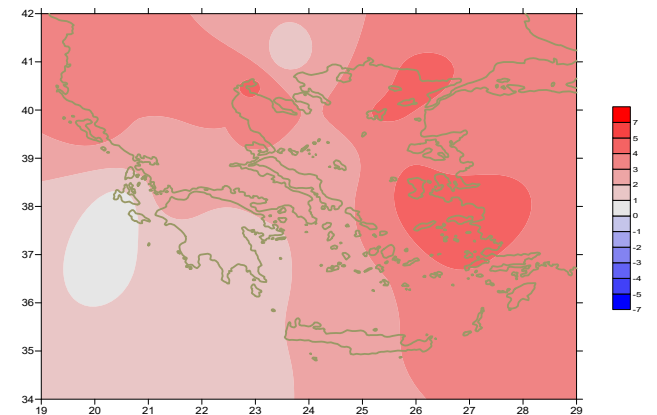
More specific (varied) :

**Minimum:**

from 10°C to 24°C over north mainland,  
 from 16°C to 26°C over central mainland,  
 from 20°C to 27°C over rest parts.

**Maximum:**

from 28°C to 37°C over north mainland,  
 from 29°C to 39°C over central mainland,  
 from 28°C to 36°C over rest parts.



**Deviation of minimum temperature from normal values**



## P r e c i p i t a t i o n

### First 10-day period

Locally significant amounts of precipitation.

More specific:

7mm in Edessa, 23mm in Ormenio, 7mm in Doxato, 10mm in Aghialos (2/6),  
15mm in Kavala, 14mm in Kerkira (3/6),  
13mm in Ioannina (4/6),  
13mm in Kozani, 25mm in Preveza, 13mm in Larisa, 14mm in Sofades (5/6),  
15mm in Soufli (9/6).

### Second 10-day period

Locally high amounts of precipitation.

More specific:

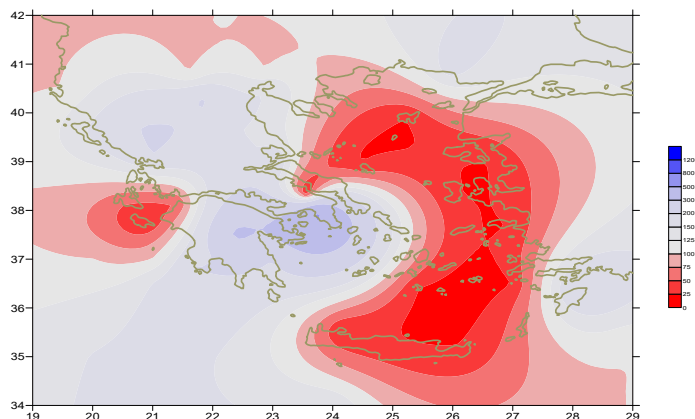
14mm in Edessa, 26mm in Ioannina, 13mm in Tithorea, 38mm in Tripoli (11/6),  
19mm in Alexandroupoli, 31mm in Ormenio (12/6),  
11mm in Serres (14/6),  
22mm in Ioannina, 17mm in Kerkira (16/6),  
14mm in Sofades, 9mm in Hellinikon (17/6),  
12mm in Serres, 12mm in Kozani, 16mm in Tripoli, 14mm in Elefsina (19/6).

### Third 10-day period

Locally low amounts of precipitation only over mainland.

More specific:

10mm in Ormenio (22/6), 9mm in Florina (24/6),  
19mm in Thessaloniki, 7mm in Lamia (26/6),  
5mm in Serres (28/6).



**Deviation of monthly precipitation height  
from normal values (%)**

TABLE OF MEAN VALUES

STATION	Longitude	Latitude	Tmean	TX	TN	RR	INST
SERRES	23,53	41,07	25,8	34,1	17,6	38	287
FLORINA	21,40	40,78					
KASTORIA	21,27	40,45	22,7	28,8	13,7	22	280
TRIKALA_IMATHIAS	22,55	40,60					
THESSALONIKI	22,97	40,52	27,1	31,3	20,4	39	320
CHRYSOUPOLI	24,62	40,92	25,8	29,9	19,4	38	305
ALEXANDROUPOLI	25,95	40,85	26,1	30	19	44	324
KOZANI	21,83	40,28	23,5	28,3	16,1	79	
KERKYRA	19,92	39,62	27	30,9	20,1	16	317
IOANNINA	20,82	39,70	23,7	30	15,6	79	293
PREVEZA	20,76	38,91	25,4	29,7	19,8	35	
TRIKALA_THESSALIAS	21,77	39,52					
LARISA	22,45	39,65	27,2	32,7	18	25	270
LIMNOS	25,23	39,92	26,2	29,6	20,9		344
ARTA	21,00	39,17					
AGHIALOS	22,78	39,21	26,6	30,6	19,1	25	299
MYTILINI	26,60	39,05	27,4	30,9	22,6		364
VELO	22,77	37,97					
AGRINIO	21,35	38,60					
LAMIA	22,43	38,87					
ANDRAVIDA	21,28	37,92	26,4	31,1	18		376
SKYROS	24,48	38,96	25,5	27,8	21,5	0	282
ARGOSTOLI	20,50	38,12	25,9	29,7	18,9	0	371
ARAXOS	21,42	38,15	26,5	30,6	19,2	4	306
TANAGRA	23,57	38,33	26,9	31,2	18,4		354
HIOS	26,13	38,35	26,8	29,7	22		347
PYRGOS	21,42	37,67					
TRIPOLI	22,40	37,52	22,4	28,9	13,2	79	311
TATOI	23,78	38,10	26,4	30,3	18,4	2	
HELLINIKO	23,73	37,90	27	31,3	22,2	32	357
ELEYSINA	23,55	38,07	28,2	32,3	22,2	19	
ZAKYNTHOS	20,88	37,75	27,2	31,3	19,3	1	385
SAMOS	26,92	37,68	27,7	31,1	23,1		
ARGOS	22,75	37,63					
KALAMATA	22,02	37,07	25,6	30,4	17,4	13	333
NAXOS	25,37	37,10					
METHONI	21,70	36,82					
MHLOS	24,43	36,73					
SPATA	23,95	37,95	26,6	30,3	19,6		
KOS	27,08	36,80	25,9	29,6	22,2		
KYTHIRA	22,98	36,15					
SANTORINI	25,41	36,41	25,7	28,6	22,5	0	338
SOUDA	24,12	35,55	25,7	29,2	20,8	0	366
RODOS	28,08	36,40	26,5	29,7	23,1	5	378
MYKONOS	25,35	37,43	25,2	28,1	21,9		
HRAKLEIO	25,18	35,33	25,6	27,7	21,2		370
IERAPETRA	25,73	35,02					
SITEIA	26,10	35,21	24,5	27	22,9	0	
RETHYMNO	24,50	35,36					
TYMPAKI	24,76	35,06					
KASTELI	25,33	35,18	23,9	27,9	19,2	0	316
KARPATOS	27,15	35,42	24,8	28,2	22,1	0	
PAROS	25,13	37,02	25,4	27,6	21,3	0	369
SYROS	24,95	37,42	26	29,1	22,5	0	372
IKARIA	26,35	37,68					

**TABLE OF DEVIATIONS  
FROM NORMAL VALUES**

STATION	TMEAN ( deviation ) (I)	PRECI (deviation % ) (II)
SERRES	1.9	86
FLORINA		
THESSALONIKI	2.9	123
ALEXANDROUPOLI	3.1	161
KOZANI	2.2	204
KERKYRA	3.2	112
IOANNINA	2	169
LARISA	2.3	106
LIMNOS	2.9	0
AGHIALOS	2.2	119
MYTILINI	2.8	0
AGRINIO		
SKYROS	1.8	0
ARGOSTOLI	2.7	0
ARAXOS	2.5	44
HIOS	2.9	0
HELLINIKO	2	533
ZAKYNTHOS	3.1	14
SAMOS	2.5	0
KALAMATA	1.5	200
NAXOS		
METHONI		
SANTORINI	2.3	0
SOUDA	1.3	0
RODOS	1.8	173
HERAKLIO	1.3	0
SITIA	0.1	0

(I) deviation of mean temperature from normal values  
 (II) deviation of monthly precipitation height from normal values %.

# Climatic Bulletin

## General Description

Precipitation amounts were higher than normal values only over a few parts of mainland while they were lower over rest parts. Particularly over most parts of Aegean area , Attica and Evia lack of precipitation recorded.  
The mean temperature varied higher than normals over most parts.

### Climatic Parameters :

- ❖ **Normal Values** : normal values for various parameters (temperature, precipitation, etc) are defined as mean values calculated for 30 years. These normal values are used as basis and represent the mean situation. They can be specified in 10 daily, monthly, seasonally and yearly level and are used for the trend comparison of 10 days, month, season or year as: rainy decameron, mild winter, cool August etc.

### Measurement :

- ❖ **Precipitation**  
1 mm = 1 litre/m<sup>2</sup>

### Table Legend :

Tmean : Mean Temperature  
TN : Minimum Temperature  
TX : Maximum Temperature  
RR : Precipitation height(mm)  
INST : Sun Duration (hours)

### UTC hours (Universal Time Coordinates) in Greece :

- ❖ Winter : UTC hour = local hour - 2
- ❖ Summer : UTC hour = local hour - 3

© Hellenic National Meteorological Service  
Reproduction is prohibited without written authorization  
14 El.Venizelou 16777  
Helliniko, Athens  
Greece