




Climatic Bulletin

February 2020

 **Max
temperature**

 **Min
temperature**

 **Mean
temperature**

 **Precipitation**

 **Sunshine
duration**

February had a lot of snowfalls over mountainous areas but also remarkable rainfalls over eastern parts of Aegean.

In parallel two warm periods (11-14/2 and 21-27/2) recorded during of which the maximum temperature exceeded the value 20 degrees centigrade.

Also gale force winds prevailed over Greek seas for a long period.



Temperature

First 10-day period

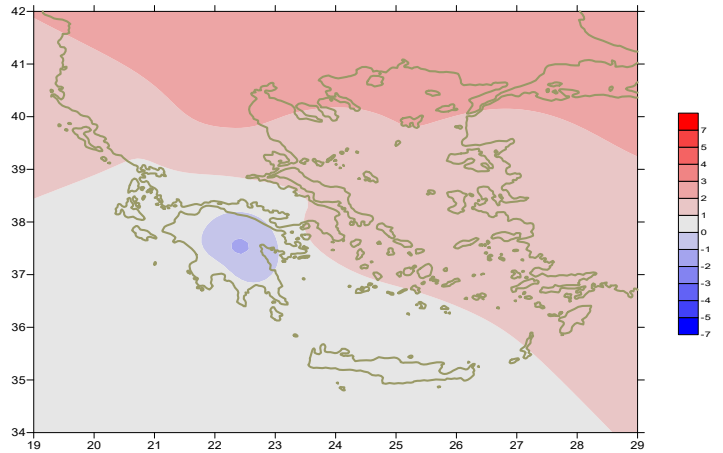
More specific (varied) :

Minimum:

from -13°C to 8°C over north mainland,
 from -6°C to 12°C over central mainland,
 from 2°C to 16°C over rest parts.

Maximum:

from 6°C to 19°C over north mainland,
 from 6°C to 21°C over central mainland,
 from 9°C to 21°C over rest parts.



Deviation of mean temperature from normal values

Second 10-day period

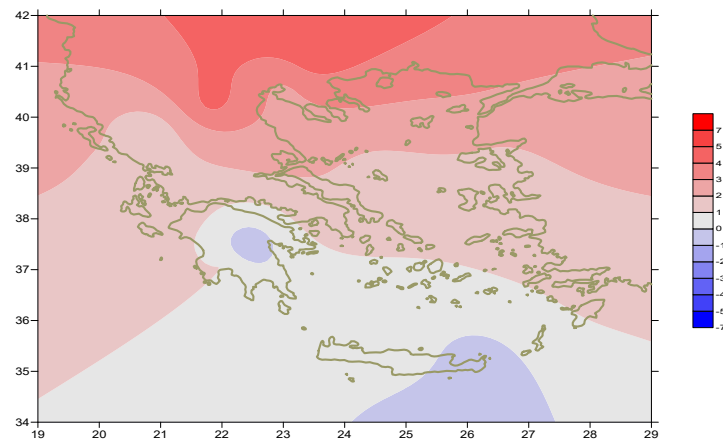
More specific (varied) :

Minimum:

from -5°C to 8°C over north mainland,
 from -2°C to 14°C over central mainland,
 from 2°C to 15°C over rest parts.

Maximum:

from 5°C to 20°C over north mainland,
 from 9°C to 22°C over central mainland,
 from 12°C to 21°C over rest parts.



Deviation of maximum temperature from normal values

Third 10-day period

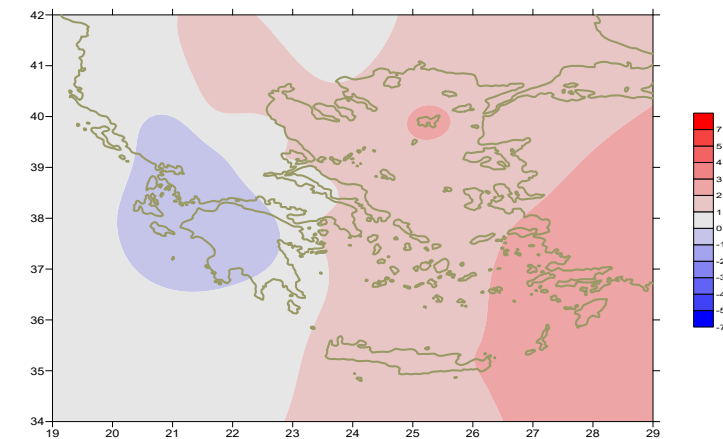
More specific (varied) :

Minimum:

from -5°C to 14°C over north mainland,
 from -2°C to 15°C over central mainland,
 from 5°C to 16°C over rest parts.

Maximum:

from 9°C to 21°C over north mainland,
 from 11°C to 24°C over central mainland,
 from 12°C to 20°C over rest parts.



Deviation of minimum temperature from normal values



P r e c i p i t a t i o n

First 10-day period

Locally significant amounts of precipitation.
More specific:

18mm in Alexandroupoli, 31mm in Kavala, 18mm in Aghialos,
24mm in Mitilini, 10mm in Skiros (5/2),
15mm in Santorini, 13mm in Souda, 11mm in Chios, 23mm in Mitilini,
15mm in Shinias, 10mm in Ikaria (6/2),
24mm in Kasteli, 10mm in Karpathos (7/2).

Second 10-day period

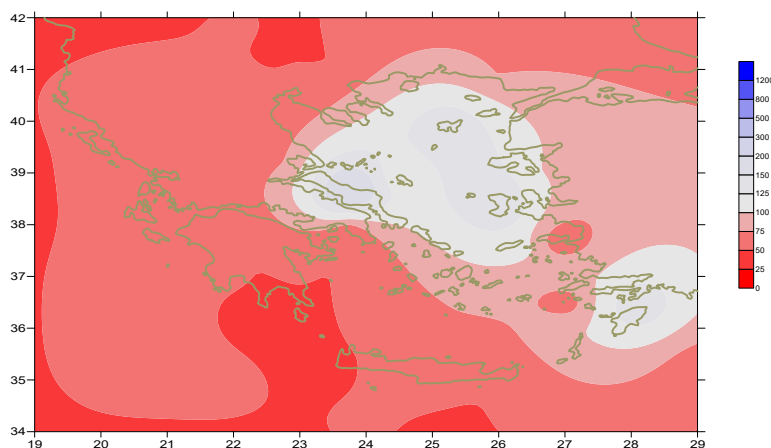
Locally high amounts of precipitation.
More specific:

19mm in Ioannina, 20mm in Konitsa, 12mm in Argostoli, 14mm in Rodos (11/2),
28mm in Oreoi, 16mm in Karistos, 22mm in Skiros, 13mm in Santorini,
16mm in Heraklion, 17mm in Timbaki, 53mm in Chios, 17mm in Leros,
86mm in Ikaria, 16mm in Samos, 43mm in Leros, 107mm in Rodos,
15mm in Spata, 28mm in Tatoi, 16mm in N.Filadelfia,
23mm in Rafina, 18mm in Shinias (15/2).
15mm in Ioannina, 30mm in Tithorea, 17mm in Kotroni (20/2).

Third 10-day period

Locally low precipitation at the end.
More specific:

16mm in Tanagra, 16mm in Mikonos, 14mm in Leros,
13mm in Kotroni, 14mm in Shinias (21/2),
12mm in Argostoli (22/2),
17mm in Alexandroupoli, 10mm in Timbaki, 12mm in Limnos (29/2).



*Deviation of monthly precipitation height
from normal values (%)*

**TABLE OF DEVIATIONS
FROM NORMAL VALUES**

STATION	TMEAN (deviation) (I)	PRECI (deviation %) (II)
SERRES	2.4	45
FLORINA		
THESSALONIKI	2.2	52
ALEXANDROUPOLI	2.3	70
KOZANI	2.5	57
KERKYRA	1.4	25
IOANNINA	1.1	55
LARISA	1.9	54
LIMNOS	2.1	111
AGHIALOS	1.6	71
MYTILINI	1.5	82
AGRINIO		
SKYROS	1.1	87
ARGOSTOLI	0.6	37
ARAXOS	0.6	26
HIOS	1.3	112
HELLINIKO	1.5	29
ZAKYNTHOS	0.5	17
SAMOS	1.8	38
KALAMATA	0.5	31
NAXOS		
METHONI		
SANTORINI	2	77
SOUDA	0.7	45
RODOS	1.6	127
HERAKLIO	0.6	57
SITIA	0.4	51

(I) deviation of mean temperature from normal values
 (II) deviation of monthly precipitation height from normal values %.

Climatic Bulletin

General Description

Precipitation amounts were lower than normal values with the exception of a few Aegean islands and the mountainous parts of Evia. The mean temperature varied higher than normals almost everywhere.

Climatic Parameters :

- ❖ **Normal Values** : normal values for various parameters (temperature, precipitation, etc) are defined as mean values calculated for 30 years. These normal values are used as basis and represent the mean situation. They can be specified in 10 daily, monthly, seasonally and yearly level and are used for the trend comparison of 10 days, month, season or year as: rainy decameron, mild winter, cool August etc.

Measurement :

- ❖ **Precipitation**
1 mm = 1 litre/m²

Table Legend :

Tmean : Mean Temperature
 TN : Minimum Temperature
 TX : Maximum Temperature
 RR : Precipitation height(mm)
 INST : Sun Duration (hours)

UTC hours (Universal Time Coordinates) in Greece :

- ❖ Winter : UTC hour = local hour - 2
- ❖ Summer : UTC hour = local hour - 3

© Hellenic National Meteorological Service
 Reproduction is prohibited without written authorization
 14 El.Venizelou 16777
 Helliniko, Athens
 Greece