




Climatic Bulletin

June 2020

 **Max
temperature**

 **Min
temperature**

 **Mean
temperature**

 **Precipitation**

 **Sunshine
duration**

In June the high frequency of unstable weather conditions caused a lot of significant rainfalls and thunderstorms (with hail) over north parts. In parallel a short but intense dust episode took place on the 6th of month and two others much more lighter on the 2th and the 8th.



Temperature

First 10-day period

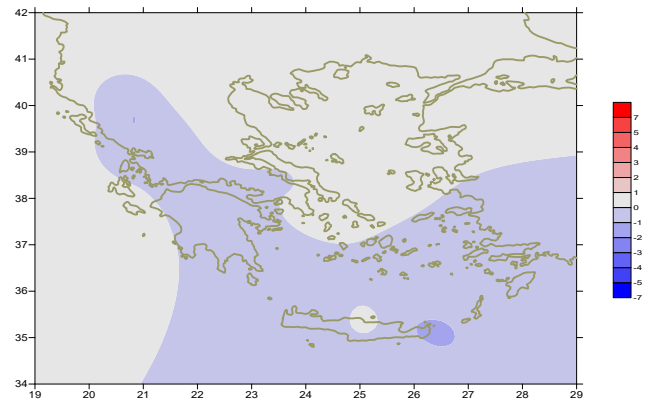
More specific (varied) :

Minimum:

from 3°C to 22°C over north mainland,
 from 6°C to 20°C over central mainland,
 from 11°C to 23°C over rest parts.

Maximum:

from 20°C to 32°C over north mainland,
 from 20°C to 33°C over central mainland,
 from 20°C to 33°C over rest parts.



Deviation of mean temperature from normal values

Second 10-day period

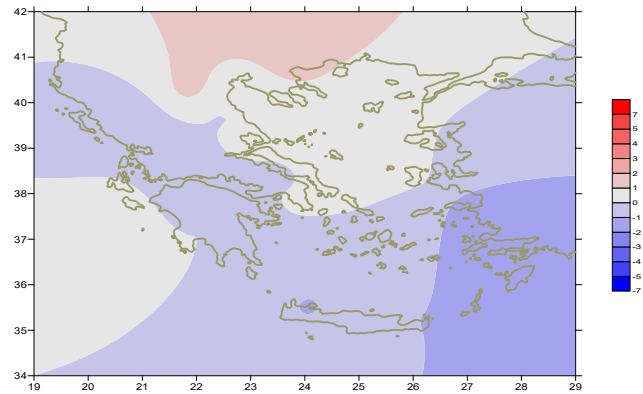
More specific (varied) :

Minimum:

from 5°C to 22°C over north mainland,
 from 8°C to 21°C over central mainland,
 from 15°C to 25°C over rest parts.

Maximum:

from 25°C to 33°C over north mainland,
 from 23°C to 35°C over central mainland,
 from 24°C to 34°C over rest parts.



Deviation of maximum temperature from normal values

Third 10-day period

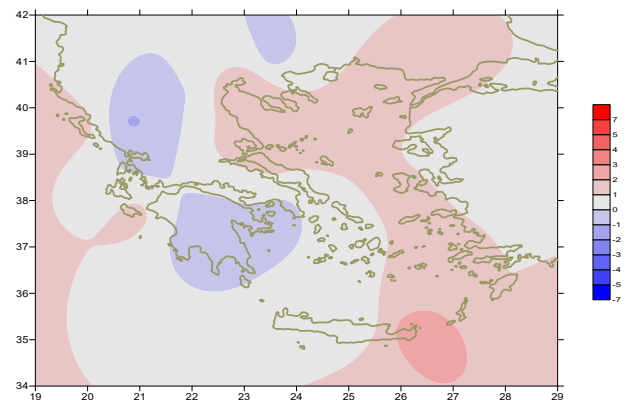
More specific (varied) :

Minimum:

from 7°C to 23°C over north mainland,
 from 11°C to 24°C over central mainland,
 from 17°C to 24°C over rest parts.

Maximum:

from 24°C to 37°C over north mainland,
 from 26°C to 38°C over central mainland,
 from 26°C to 34°C over rest parts.



Deviation of minimum temperature from normal values



P r e c i p i t a t i o n

First 10-day period

Locally remarkable amounts of precipitation.

More specific:

14mm in Alexandroupoli, 12mm in Tithorea, 17mm in Tripoli,
11mm in Astipalea, 26mm in Mitilini, 15mm in Olympic stadium (1/6),
12mm in Chios (2/6),
12mm in Tanagra, 10mm in Mitilini, 10mm in Hellinikon(3/6),
19mm in Kastoria, 13mm in Kozani, 28mm in Preveza, 13mm in Ioannina,
17mm in Argostoli, 23mm in Othonoi, 55mm in Kerkira (6/6).

Second 10-day period

Temporarily remarkable amounts of precipitation over north parts.

More specific:

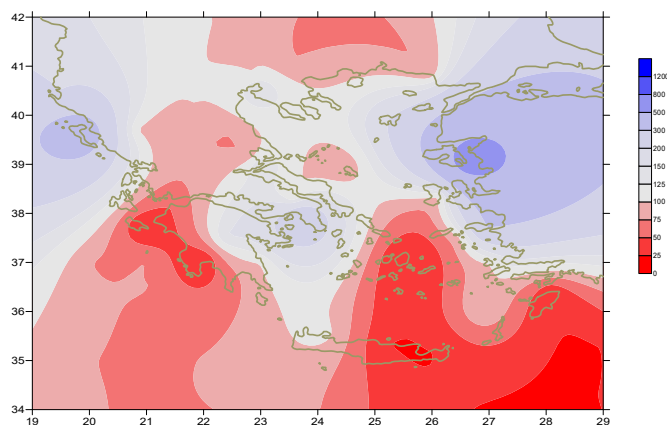
12mm in Soufli, 16mm in Thessaloniki (11/6),
13mm in Xanthi (12/6),
8mm in Doxato (15/6), 14mm in Soufli, 13mm in Serres (17/6),
12mm in Xanthi (18/6).

Third 10-day period

Low precipitation in general.

More specific:

11mm in Ioannina, 13mm in Tithorea, 22mm in Astros,
16mm in Spata (22/6),
15mm in Xanthi, 10mm in Thessaloniki, 8mm in Kastoria,
7mm in Kozani, 7mm in Kranea (23/6),
8mm in Kavala, 14mm in Limnos (24/6),
11mm in Soufli (25/6),
23mm in Konitsa (28/6).



**Deviation of monthly precipitation height
from normal values (%)**

TABLE OF MEAN VALUES

STATION	Longitude	Latitude	Tmean	TX	TN	RR	INST
RRES	23,53	41,07	24,4	31,4	15,9	26	282
FLORINA	21,40	40,78					
KASTORIA	21,27	40,45	20,9	26,8	12	44	277
TRIKALA_IMATHIAS	22,55	40,60					
THESSALONIKI	22,97	40,52	25	29,3	18	32	325
CHRYSOUPOLI	24,62	40,92	23,4	26,8	17,3	36	282
ALEXANDROUPOLI	25,95	40,85	23,9	27,7	16,4	16	320
KOZANI	21,83	40,28	21,9	27,6	12,8	26	
KERKYRA	19,92	39,62	24,1	27,2	17,9	56	311
IOANNINA	20,82	39,70	20,6	26,6	11,5	34	283
PREVEZA	20,76	38,91	22,7	25,8	17,2	28	
TRIKALA_THESSALIAS	21,77	39,52					
LARISA	22,45	39,65	25,3	30,8	16	11	277
LIMNOS	25,23	39,92	23,5	26,8	18,2	36	331
ARTA	21,00	39,17					
AGHIALOS	22,78	39,21	24,9	29,4	17,7	10	312
MYTILINI	26,60	39,05	25	28,3	19,8	37	336
VELO	22,77	37,97					
AGRINIO	21,35	38,60					
LAMIA	22,43	38,87					
ANDRAVIDA	21,28	37,92	23,4	27,9	16,1	2	380
SKYROS	24,48	38,96	24,1	26,7	20,5		325
ARGOSTOLI	20,50	38,12	23,4	26,5	18,5	17	364
ARAXOS	21,42	38,15	23,6	27,2	16,5	2	316
TANAGRA	23,57	38,33	24,9	29,7	16,3	13	348
HIOS	26,13	38,35	24,4	27,8	18,5	14	331
PYRGOS	21,42	37,67					
TRIPOLI	22,40	37,52	21,2	26,7	11,3	32	327
TATOI	23,78	38,10	24,2	28,5	16,1	4	
HELLINIKO	23,73	37,90	25,2	28,7	19,7	18	362
ELEYSINA	23,55	38,07	26,1	30,2	20,1	18	
ZAKYNTHOS	20,88	37,75	24,7	28,5	19,8	0	381
SAMOS	26,92	37,68	24,6	28,1	19,3	8	
ARGOS	22,75	37,63					
KALAMATA	22,02	37,07	23,9	28,8	25,2	0	331
NAXOS	25,37	37,10					
METHONI	21,70	36,82					
MHLOS	24,43	36,73					
SPATA	23,95	37,95	24,9	29	17,8		
KOS	27,08	36,80	23,9	27,4	20,5		
KYTHIRA	22,98	36,15					
SANTORINI	25,41	36,41					
SOUDA	24,12	35,55	24	27,6	19,4	5	377
RODOS	28,08	36,40	24,2	26,9	20,8		368
MYKONOS	25,35	37,43	24,6	26,9	21,6		
HRAKLEIO	25,18	35,33	24,5	27,1	19,1		364
IERAPETRA	25,73	35,02					
SITEIA	26,10	35,21	23,3	26,5	21,8	0	346
RETHYMNO	24,50	35,36					
TYMPAKI	24,76	35,06					
KASTELI	25,33	35,18	23,1	27,1	16,9	0	309
KARPATOS	27,15	35,42	23,4	26	20,5		
PAROS	25,13	37,02	24,1	27,2	20,2		362
SYROS	24,95	37,42	24	27,6	21	6	354
IKARIA	26,35	37,68					

**TABLE OF DEVIATIONS
FROM NORMAL VALUES**

STATION	TMEAN (deviation) (I)	PRECI (deviation %) (II)
SERRES	0.5	59
FLORINA		
THESSALONIKI	0.8	101
ALEXANDROUPOLI	0.9	59
KOZANI	0.6	67
KERKYRA	0.3	392
IOANNINA	-1.1	73
LARISA	0.4	47
LIMNOS	0.2	164
AGHIALOS	0.5	47
MYTILINI	0.4	617
AGRINIO		
SKYROS	0.4	1
ARGOSTOLI	0.2	81
ARAXOS	-0.4	22
HIOS	0.5	92
HELLINIKO	0.2	300
ZAKYNTHOS	0.6	0
SAMOS	-0.6	296
KALAMATA	-0.2	-
NAXOS		
METHONI		
SANTORINI		
SOUDA	-0.4	109
RODOS	-0.5	1
HERAKLIO	0.2	1
SITIA	-1.1	-

(I) deviation of mean temperature from normal values
 (II) deviation of monthly precipitation height from normal values %.

Climatic Bulletin

General Description

Precipitation amounts were higher than normal values over central and north mainland and over north and east parts of Aegean. The mean temperature varied close to normals.

Climatic Parameters :

- ❖ **Normal Values** : normal values for various parameters (temperature, precipitation, etc) are defined as mean values calculated for 30 years. These normal values are used as basis and represent the mean situation. They can be specified in 10 daily, monthly, seasonally and yearly level and are used for the trend comparison of 10 days, month, season or year as: rainy decameron, mild winter, cool August etc.

Measurement :

- ❖ **Precipitation**
1 mm = 1 litre/m²

Table Legend :

Tmean : Mean Temperature
 TN : Minimum Temperature
 TX : Maximum Temperature
 RR : Precipitation height(mm)
 INST : Sun Duration (hours)

UTC hours (Universal Time Coordinates) in Greece :

- ❖ Winter : UTC hour = local hour - 2
- ❖ Summer : UTC hour = local hour - 3

© Hellenic National Meteorological Service
 Reproduction is prohibited without written authorization
 14 El.Venizelou 16777
 Helliniko, Athens
 Greece