




Climatic Bulletin

January 2021

 **Max
temperature**

 **Min
temperature**

 **Mean
temperature**

 **Precipitation**

 **Sunshine
duration**

In January very high amounts of precipitation (mostly snowfalls) recorded not only over the mountainous areas but over plains of central and north mainland as well. During of the second ten day period the temperature values were extremely high over the Peloponnese, the central Sterea and the Cyclades while significant amounts of dust transported from Africa during a great episode. Also gale force winds prevailed for a long time over Aegean area.



Temperature

First 10-day period

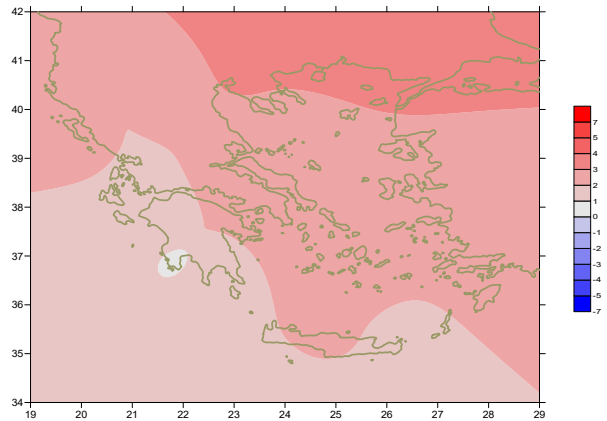
More specific (varied) :

Minimum:

from -4°C to 15°C over north mainland,
 from -2°C to 17°C over central mainland,
 from 3°C to 17°C over rest parts.

Maximum:

from 5°C to 19°C over north mainland,
 from 10°C to 20°C over central mainland,
 from 14°C to 19°C over rest parts.



Deviation of mean temperature from normal values

Second 10-day period

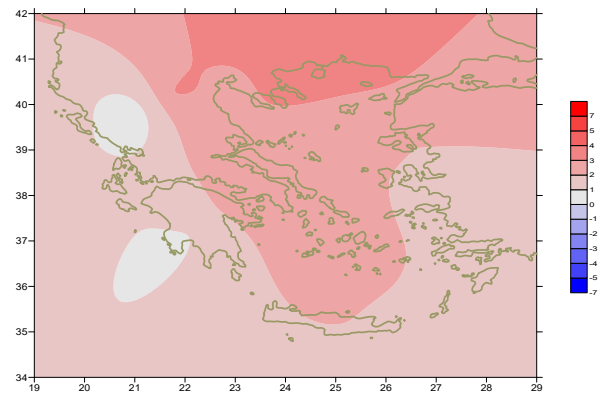
More specific (varied) :

Minimum:

from -18°C to 10°C over north mainland,
 from -6°C to 14°C over central mainland,
 from -2°C to 20°C over rest parts.

Maximum:

from -4°C to 17°C over north mainland,
 from -2°C to 27°C over central mainland,
 from 2°C to 26°C over rest parts.



Deviation of maximum temperature from normal values

Third 10-day period

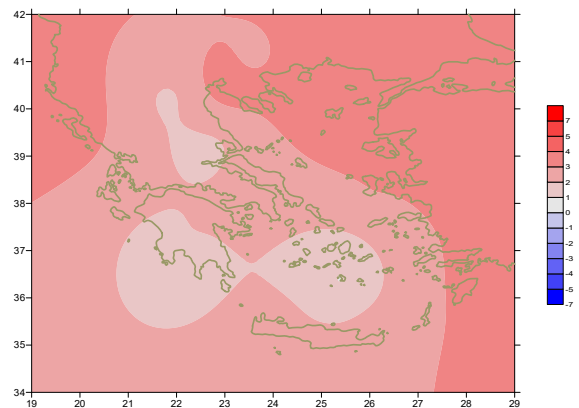
More specific (varied) :

Minimum:

from -8°C to 12°C over north mainland,
 from -3°C to 14°C over central mainland,
 from 0°C to 16°C over rest parts.

Maximum:

from 2°C to 17°C over north mainland,
 from 0°C to 21°C over central mainland,
 from 4°C to 20°C over rest parts.



Deviation of minimum temperature from normal values



P r e c i p i t a t i o n

First 10-day period

Very high amounts of precipitation temporarily.

More specific:

24mm in Mitilini (1/1),
 28mm in Ioannina, 58mm in Preveza, 28mm in Argostoli (3/1),
 35mm in Doxato, 27mm in Thessaloniki, 34mm in Serres, 32mm in Kozani,
 47mm in Preveza, 52mm in Ioannina, 39mm in Konitsa, 67mm in Argostoli,
 34mm in Kerkira, 55mm in Zakynthos, 50mm in Adravidia,
 40mm in Araxos, 34mm in Larisa (4/1),
 32mm in Rodos (5/1), 37mm in Konitsa (7/1),
 22mm in Alexandroupoli, 20mm in Soufli,
 22mm in Edessa, 29mm in Florina (10/1).

Second 10-day period

Very high amounts of precipitation temporarily.

More specific:

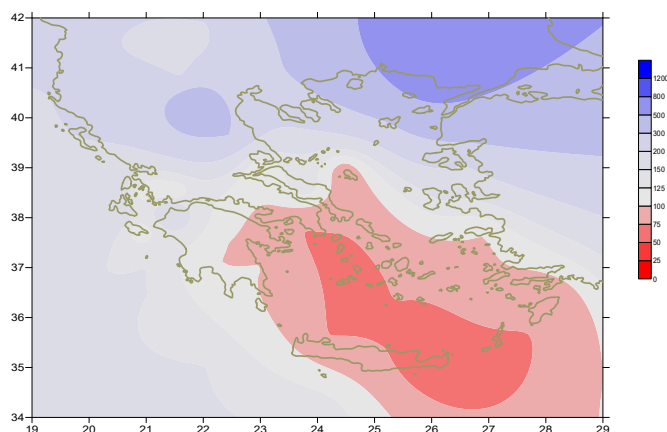
23mm in Alexandroupoli, 50mm in Ormenio, 86mm in Soufli,
 35mm in Xanthi, 23mm in Kavala, 53mm in Doxato,
 38mm in Serres, 39mm in Edessa, 25mm in Florina,
 28mm in Kastoria, 54mm in Kozani, 33mm in Ioannina, 28mm in Kranea (12/1),
 22mm in Chios, 26mm in Mitilini (13/1), 17mm in Samos (14/1),
 21mm in Zakynthos, 20mm in Adravidia, 21mm in Tithorea, 30mm in Tanagra,
 30mm in Tripoli (16/1), 35mm in Oreoi (17/1),
 22mm in Heraklion, 30mm in Souda, 23mm in Gavdos (18/1).

Third 10-day period

Very high amounts of precipitation temporarily.

More specific:

30mm in Kerkira (23/1), 30mm in Ioannina, 36mm in Konitsa,
 33mm in Alexandroupoli, 47mm in Mitilini (25/1),
 33mm in Konitsa, 45mm in Messologi (26/1),
 56mm in Limnos, 31mm in Samos (27/1),
 25mm in Chios (30/1), 40mm in Kerkira (31/1).



**Deviation of monthly precipitation height
from normal values (%)**

TABLE OF MEAN VALUES

STATION	Longitude	Latitude	Tmean	TX	TN	RR	INST
RRES	23,53	41,07	6,9	11,3	2,6	120	108
FLORINA	21,40	40,78					
KASTORIA	21,27	40,45	4,4	9,1	-0,1	134	108
TRIKALA_IMATHIAS	22,55	40,60					
THESSALONIKI	22,97	40,52	8,2	11,8	4,9	88	137
CHRYSOUPOLI	24,62	40,92	8	11,8	3,9	86	123
ALEXANDROUPOLI	25,95	40,85	8,2	11,7	4,7	408	111
KOZANI	21,83	40,28	4,5	8,8	0,5	168	
KERKYRA	19,92	39,62	12,1	15,3	8,9	256	101
IOANNINA	20,82	39,70	6,6	10,3	2,9	290	85
PREVEZA	20,76	38,91	11,2	14,3	8,2	309	
TRIKALA_THESSALIAS	21,77	39,52					
LARISA	22,45	39,65	7,2	12,3	2,6	84	
LIMNOS	25,23	39,92	10,4	13,5	7,9	183	111
ARTA	21,00	39,17					
AGHIALOS	22,78	39,21	8,8	13,8	4,5	53	145
MYTILINI	26,60	39,05	12	14	9,9	238	98
VELO	22,77	37,97					
AGRINIO	21,35	38,60					
LAMIA	22,43	38,87					
ANDRAVIDA	21,28	37,92	12	15,6	8,6	192	120
SKYROS	24,48	38,96	12,3	14,6	10,3	47	124
ARGOSTOLI	20,50	38,12	13,4	15,9	11	196	120
ARAXOS	21,42	38,15	11,8	15	8,4	148	140
TANAGRA	23,57	38,33					
HIOS	26,13	38,35	12	14,8	9,1	154	62
PYRGOS	21,42	37,67					
TRIPOLI	22,40	37,52	7,1	11,2	3	119	112
TATOI	23,78	38,10	9,5	13,7	5,1	58	
HELLINIKO	23,73	37,90	12,5	15,8	9,4	33	162
ELEYSINA	23,55	38,07	11,2	15	7,1	55	
ZAKYNTHOS	20,88	37,75	12,7	15,5	10,3	158	114
SAMOS	26,92	37,68	12,5	14,9	9,7	139	
ARGOS	22,75	37,63					
KALAMATA	22,02	37,07	11,1	16,1	7	109	137
NAXOS	25,37	37,10					
METHONI	21,70	36,82					
MHLOS	24,43	36,73					
SPATA	23,95	37,95					
KOS	27,08	36,80	13,3	16,1	11,4	71	
KYTHIRA	22,98	36,15					
SANTORINI	25,41	36,41	13,7	16	10	45	161
SOUDA	24,12	35,55	12,9	16,4	9,9	88	137
RODOS	28,08	36,40	14,1	16,5	11,9	76	132
MYKONOS	25,35	37,43	13,4	15,7	11,8	42	
HRAKLEIO	25,18	35,33	14,2	17,3	11,1	62	162
IERAPETRA	25,73	35,02					
SITEIA	26,10	35,21	13,8	16,9	12	43	131
RETHYMNO	24,50	35,36					
TYMPAKI	24,76	35,06					
KASTELI	25,33	35,18	11,4	15	7,9	58	150
KARPATOS	27,15	35,42					
PAROS	25,13	37,02	13,5	15,8	11,7	54	137
SYROS	24,95	37,42	13,2	15,2	11,6	45	152
IKARIA	26,35	37,68					

11,314,58,13617810,214,16,45611,314,57,89612510,713,7820210,5165,88616112,715,410,232137

**TABLE OF DEVIATIONS
FROM NORMAL VALUES**

STATION	TMEAN (deviation) (I)	PRECI (deviation %) (II)
SERRES	3.1	340
FLORINA		
THESSALONIKI	3.2	239
ALEXANDROUPOLI	3.4	676
KOZANI	2.5	426
KERKYRA	2.5	194
IOANNINA	2	223
LARISA	2.1	283
LIMNOS	2.9	253
AGHIALOS	2.4	110
MYTILINI	2.7	183
AGRINIO		
SKYROS	2.4	60
ARGOSTOLI	1.8	168
ARAXOS	1.7	153
HIOS	2.4	132
HELLINIKO	2.3	73
ZAKYNTHOS	1.4	105
SAMOS	2.2	94
KALAMATA	0.9	96
NAXOS		
METHONI		
SANTORINI	2.4	70
SOUDA	2.1	62
RODOS	2.4	51
HERAKLIO	2.2	68
SITIA	1.5	47

(I) deviation of mean temperature from normal values
 (II) deviation of monthly precipitation height from normal values %.

Climatic Bulletin

General Description

Precipitation amounts were lower than normal values only over Cyclades, Creta and Attica. In contrast over rest parts precipitation amounts were higher and specifically over northwest and northeast parts they were higher enough.
The mean temperature varied above normal values everywhere.

Climatic Parameters :

- ❖ **Normal Values** : normal values for various parameters (temperature, precipitation, etc) are defined as mean values calculated for 30 years. These normal values are used as basis and represent the mean situation. They can be specified in 10 daily, monthly, seasonally and yearly level and are used for the trend comparison of 10 days, month, season or year as: rainy decameron, mild winter, cool August etc.

Measurement :

- ❖ **Precipitation**
1 mm = 1 litre/m²

Table Legend :

Tmean : Mean Temperature
TN : Minimum Temperature
TX : Maximum Temperature
RR : Precipitation height(mm)
INST : Sun Duration (hours)

UTC hours (Universal Time Coordinates) in Greece :

- ❖ Winter : UTC hour = local hour - 2
- ❖ Summer : UTC hour = local hour - 3

© Hellenic National Meteorological Service
Reproduction is prohibited without written authorization
14 El.Venizelou 16777
Helliniko, Athens
Greece