




Climatic Bulletin

May 2021

 **Max
temperature**

 **Min
temperature**

 **Mean
temperature**

 **Precipitation**

 **Sunshine
duration**

May was a quite warm month with the mean temperature values keeping higher than normal ones over most parts. Also May was a very dry month, with the exception of northeastern parts.

Lack of precipitation recorded over the southern parts of Greece and over Attica as well.

In addition a significant episode of African dust transportation took place during the first three days.



Temperature

First 10-day period

More specific (varied) :

Minimum:

from 5°C to 17°C over north mainland,
 from 6°C to 20°C over central mainland,
 from 7°C to 25°C over rest parts.

Maximum:

from 18°C to 31°C over north mainland,
 from 18°C to 37°C over central mainland,
 from 19°C to 32°C over rest parts.

Second 10-day period

More specific (varied) :

Minimum:

from 2°C to 17°C over north mainland,
 from 6°C to 22°C over central mainland,
 from 6°C to 21°C over rest parts.

Maximum:

from 16°C to 31°C over north mainland,
 from 16°C to 31°C over central mainland,
 from 18°C to 28°C over rest parts.

Third 10-day period

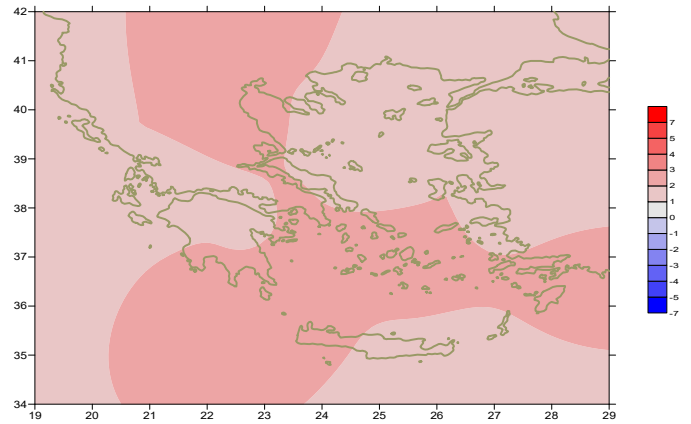
More specific (varied) :

Minimum:

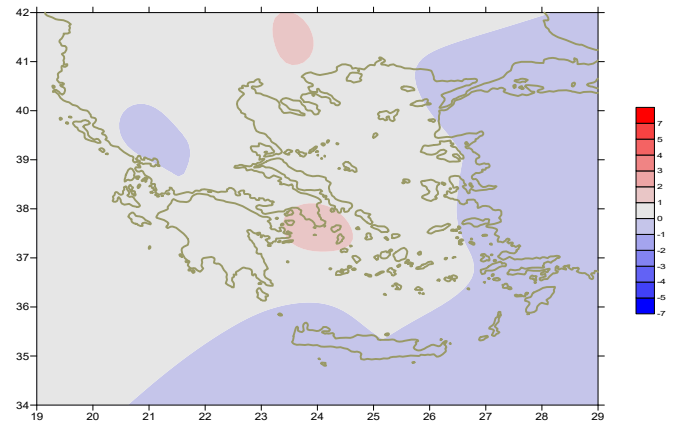
from 2°C to 20°C over north mainland,
 from 6°C to 18°C over central mainland,
 from 8°C to 22°C over rest parts.

Maximum:

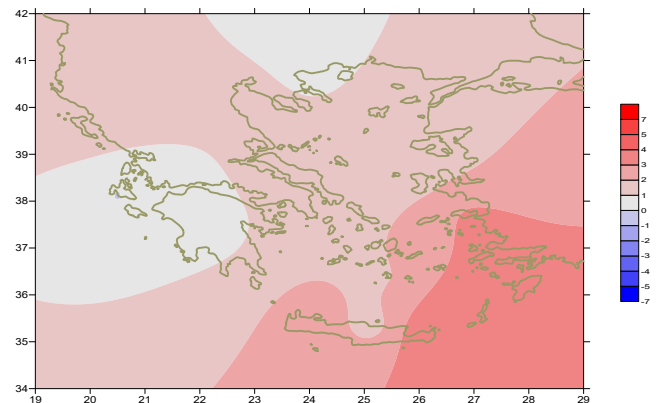
from 17°C to 31°C over north mainland,
 from 18°C to 36°C over central mainland,
 from 20°C to 35°C over rest parts.



Deviation of mean temperature from normal values



Deviation of maximum temperature from normal values



Deviation of minimum temperature from normal values



P r e c i p i t a t i o n

First 10-day period

Locally small amounts of precipitation.

More specific:

2mm in Ioannina, 3mm in Kerkira (5/5),
2mm in Preveza, 16mm in Sofades (6/5),
2mm in Ormenio (8/5).

Δεύτερο δεκαήμερο Second 10-day period

Locally significant amounts of precipitation over mainland.

More specific:

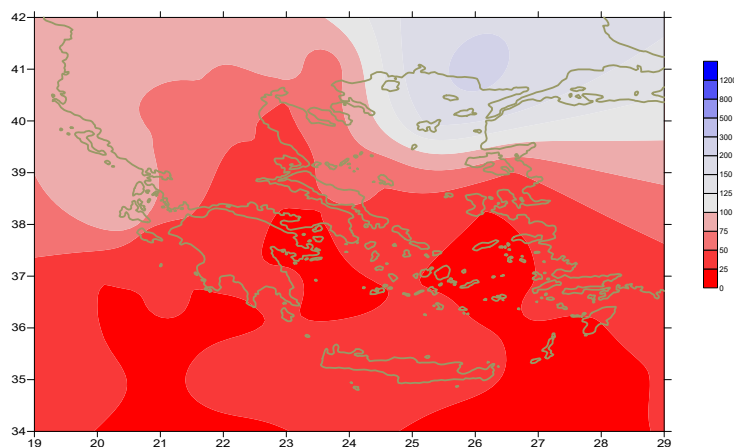
6mm in Kastoria, 8mm in Kozani, 28mm in Ioannina,
17mm in Preveza, 11mm in Konitsa, 19mm in Kerkira,
15mm in Adravida, 7mm in Araxos, 7mm in Larisa,
6mm in Sofades, 10mm in Kranea (15/5),
15mm in Xanthi, 7mm in Soufli (18/5).

Third 10-day period

Locally significant amounts of precipitation over north mainland.

More specific:

24mm in Alexandroupoli, 15mm in Soufli,
15mm in Xanthi, 12mm in Kavala, 13mm in Limnos (21/5),
10mm in Kastoria (27/5),
44mm in Alexandroupoli, 24mm in Xanthi (28/5),
44mm in Alexandroupoli (29/5), 8mm in Florina (30/5),
12mm in Serres, 8mm in Ormenio, 18mm in Kozani,
16mm in Kranea, 7mm in Aghialos, 15mm in Limnos,
8mm in Kotroni (31/5).



*Deviation of monthly precipitation height
from normal values (%)*

TABLE OF MEAN VALUES

STATION	Longitude	Lattitude	Tmean	TX	TN	RR	INST
SERRES	23,53	41,07	21,7	29,1	12,5	16	308
FLORINA	21,40	40,78					
KASTORIA	21,27	40,45	18,7	24,8	9,1	21	287
TRIKALA_IMATHIAS	22,55	40,60					
THESSALONIKI	22,97	40,52	21,6	26,1	13,6	9	309
CHRYSOUPOLI	24,62	40,92	19,9	23,7	14	48	304
ALEXANDROUPOLI	25,95	40,85	20	24,2	12,6	81	316
KOZANI	21,83	40,28	19,2	25,1	10,7	21	
KERKYRA	19,92	39,62	21	24,9	14,7	21	325
IOANNINA	20,82	39,70	19,4	25,1	10,9	30	303
PREVEZA	20,76	38,91	20,2	23,8	14,7	19	
TRIKALA_THESSALIAS	21,77	39,52					
LARISA	22,45	39,65	22,2	28,2	12	12	303
LIMNOS	25,23	39,92	19,6	23,3	14,3	29	313
ARTA	21,00	39,17					
AGHIALOS	22,78	39,21					
MYTILINI	26,60	39,05	21,9	26	16,6	7	318
VELO	22,77	37,97					
AGRINIO	21,35	38,60					
LAMIA	22,43	38,87					
ANDRAVIDA	21,28	37,92	20,8	26,2	12,9	15	358
SKYROS	24,48	38,96	20,6	23,9	16,3		316
ARGOSTOLI	20,50	38,12	21	24,6	14,8	15	336
ARAXOS	21,42	38,15	20,9	25,2	13,5	7	338
TANAGRA	23,57	38,33	22,1	27,3	13		322
HIOS	26,13	38,35	21,5	24,8	15,1		324
PYRGOS	21,42	37,67					
TRIPOLI	22,40	37,52	18,6	24,2	8,6	0	334
TATOI	23,78	38,10	21,8	27	13,6	0	
HELLINIKO	23,73	37,90	22,7	28,2	17,6	0	323
ELEYSINA	23,55	38,07	23,7	28,1	17,1		
ZAKYNTHOS	20,88	37,75	21,5	25,3	15		354
SAMOS	26,92	37,68	22,3	26	17,3		
ARGOS	22,75	37,63					
KALAMATA	22,02	37,07	22,1	27,8	13,1		352
NAXOS	25,37	37,10					
METHONI	21,70	36,82					
MHLOS	24,43	36,73					
SPATA	23,95	37,95					
KOS	27,08	36,80	21,5	25,7	17,3		
KYTHIRA	22,98	36,15					
SANTORINI	25,41	36,41	21,9	24,8	17,6		316
SOUDA	24,12	35,55	22,4	26,5	17,1	2	362
RODOS	28,08	36,40	22,7	25,6	19	0	364
MYKONOS	25,35	37,43	22,3	25,7	18,3		
HRAKLEIO	25,18	35,33	21,9	24,9	16,5		357
IERAPETRA	25,73	35,02					
SITEIA	26,10	35,21	22	25,5	19,4	0	321
RETHYMNO	24,50	35,36					
TYMPAKI	24,76	35,06					
KASTELI	25,33	35,18	22	27,2	14,3		328
KARPATIOS	27,15	35,42					
PAROS	25,13	37,02	21,7	25,5	18,5	5	314
SYROS	24,95	37,42	21,5	25,9	17,8		319
IKARIA	26,35	37,68					

11,314,58,13617810,214,16,45611,314,57,89612510,713,7820210,5165,88616112,715,410,232137

**TABLE OF DEVIATIONS
FROM NORMAL VALUES**

STATION	TMEAN (deviation) (I)	PRECI (deviation %) (II)
SERRES	2.2	33
FLORINA		
THESSALONIKI	2.1	21
ALEXANDROUPOLI	1.7	223
KOZANI	2.4	37
KERKYRA	1.4	58
IOANNINA	2	45
LARISA	2.6	32
LIMNOS	1.2	125
AGHIALOS		
MYTILINI	1.7	33
AGRINIO		
SKYROS	1.3	0.1
ARGOSTOLI	1.5	79
ARAXOS	1.1	37
HIOS	2	0.1
HELLINIKO	2.1	0
ZAKYNTHOS	1.7	0.1
SAMOS	1.8	0
KALAMATA	2.3	0
NAXOS		
METHONI		
SANTORINI	2.7	0.2
SOUDA	2.4	15
RODOS	2.2	0
HERAKLIO	1.6	0.1
SITIA	1.6	0

(I) deviation of mean temperature from normal values
 (II) deviation of monthly precipitation height from normal values %.

Climatic Bulletin

General Description

Precipitation amounts were lower than normal values over most parts. The mean temperature varied quite higher than normal everywhere.

Climatic Parameters :

- ❖ **Normal Values** : normal values for various parameters (temperature, precipitation, etc) are defined as mean values calculated for 30 years. These normal values are used as basis and represent the mean situation. They can be specified in 10 daily, monthly, seasonally and yearly level and are used for the trend comparison of 10 days, month, season or year as: rainy decameron, mild winter, cool August etc.

Measurement :

- ❖ **Precipitation**
1 mm = 1 litre/m²

Table Legend :

Tmean : Mean Temperature
 TN : Minimum Temperature
 TX : Maximum Temperature
 RR : Precipitation height(mm)
 INST : Sun Duration (hours)

UTC hours (Universal Time Coordinates) in Greece :

- ❖ Winter : UTC hour = local hour - 2
- ❖ Summer : UTC hour = local hour - 3

© Hellenic National Meteorological Service
 Reproduction is prohibited without written authorization
 14 El.Venizelou 16777
 Helliniko, Athens
 Greece