




# Climatic Bulletin

April 2022

 **Max  
temperature**

 **Min  
temperature**

 **Mean  
temperature**

 **Precipitation**

 **Sunshine  
duration**

April was a relatively warm month, but mainly a dry one for every part of Greece. Meanwhile significant snowfalls recorded over the mountainous areas in the middle of the period. Also gale force winds affected the whole country for a long time.



# Temperature

### First 10-day period

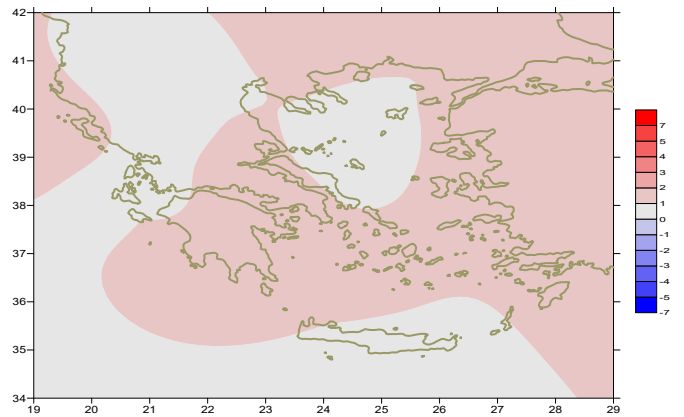
More specific (varied) :

**Minimum:**

from -3°C to 14°C over north mainland,  
 from 2°C to 16°C over central mainland,  
 from 8°C to 19°C over rest parts.

**Maximum:**

from 6°C to 24°C over north mainland,  
 from 11°C to 28°C over central mainland,  
 from 13°C to 25°C over rest parts.



*Deviation of mean temperature from normal values*

### Second 10-day period

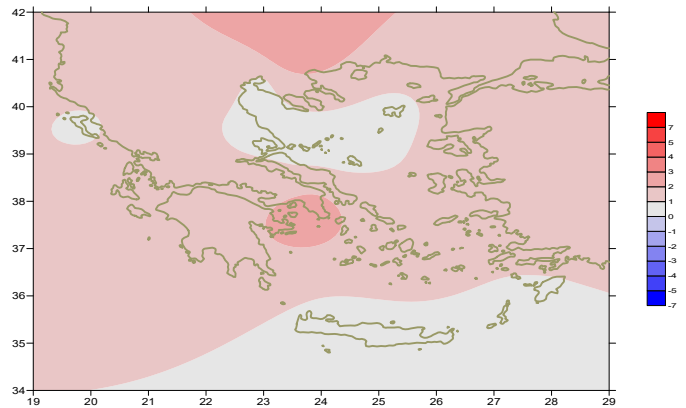
More specific (varied) :

**Minimum:**

from -4°C to 13°C over north mainland,  
 from 0°C to 13°C over central mainland,  
 from 4°C to 14°C over rest parts.

**Maximum:**

from 13°C to 25°C over north mainland,  
 from 15°C to 23°C over central mainland,  
 from 13°C to 21°C over rest parts.



*Deviation of maximum temperature from normal values*

### Third 10-day period

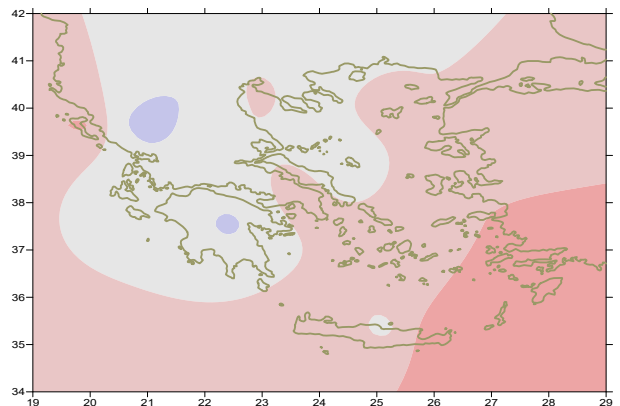
More specific (varied) :

**Minimum:**

from 2°C to 16°C over north mainland,  
 from 3°C to 16°C over central mainland,  
 from 9°C to 18°C over rest parts.

**Maximum:**

from 15°C to 30°C over north mainland,  
 from 20°C to 31°C over central mainland,  
 from 18°C to 27°C over rest parts.



*Deviation of minimum temperature from normal values*



## P r e c i p i t a t i o n

### First 10-day period

Significant amounts of precipitation over north mainland.

More specific:

11mm in Ioannina (1/4),  
 13mm in Konitsa (2/4), 6mm in Kastoria, 15mm in Ioannina,  
 9mm in Konitsa (3/4), 7mm in Kastoria (4/4),  
 8mm in Kavala, 8mm in Doxato, 10mm in Serres (5/4),  
 3mm in Florina, 4mm in Kranea (7/4),  
 9mm in Konitsa, 11mm in Kastoria, 13mm in Serres (10/4).

### Second 10-day period

Locally significant amounts of precipitation.

More specific:

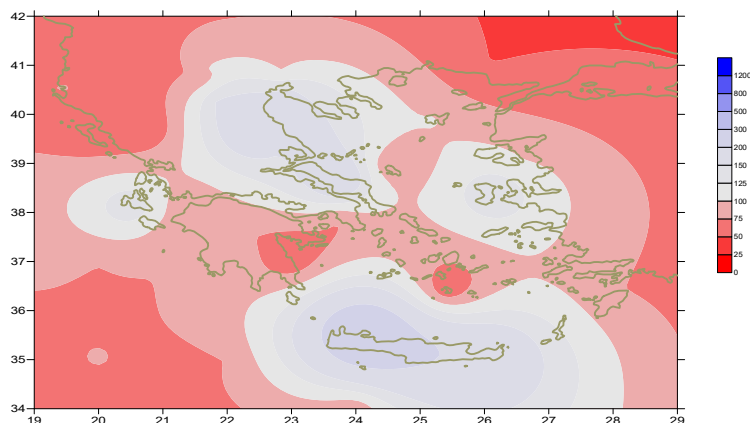
21mm in Αλεξανδρούπολη, 25mm in Xanthi, 22mm in Kavala,  
 12mm in Doxato, 20mm in Aghialos, 19mm in Tithorea,  
 33mm in Orei (17/4),  
 24mm in Zakynthos, 16mm in Argostoli, 10mm in Kerkira,  
 15mm in Adravida, 14mm in Araxos, 25mm in Kalamata,  
 12mm in Kranea, 18mm in Aghialos, 15mm in Chios, 14mm in Skiathos,  
 20mm in Tripoli, 13mm in Argos, 45mm in Leonidio (18/4),  
 14mm in Rodos, 10mm in Tripoli (19/4).

### Third 10-day period

Very small amounts of precipitation.

More specific:

9mm in Serres, 2mm in Thessaloniki (30/4).



**Deviation of monthly precipitation height  
from normal values (%)**

## TABLE OF MEAN VALUES

STATION	Longitude	Latitude	Tmean	TX	TN	RR	INST
SERRES	23,53	41,07	15,7	22,7	7,9	36	228
FLORINA	21,40	40,78					
KASTORIA	21,27	40,45	12,4	18,2	4,5	44	200
TRIKALA_IMATHIAS	22,55	40,60					
THESSALONIKI	22,97	40,52	15,2	20	8,5	22	237
CHRYSOUPOLI	24,62	40,92	14,3	18,5	8,9	34	240
ALEXANDROUPOLI	25,95	40,85	14,2	18,6	8	29	249
KOZANI	21,83	40,28	12,4	18,3	5,5	26	
KERKYRA	19,92	39,62	16,2	20,1	11,4	21	228
IOANNINA	20,82	39,70	13,5	19,3	5,6	44	193
PREVEZA	20,76	38,91	16,2	19,9	11,5	12	
TRIKALA_THESSALIAS	21,77	39,52					
LARISA	22,45	39,65	15,1	20,9	7,2	14	223
LIMNOS	25,23	39,92	14,7	18	10,5	16	254
ARTA	21,00	39,17					
AGHIALOS	22,78	39,21	15,4	19,9	8,6	44	244
MYTILINI	26,60	39,05	17,3	21,1	13,1	12	250
VELO	22,77	37,97					
AGRINIO	21,35	38,60					
LAMIA	22,43	38,87					
ANDRAVIDA	21,28	37,92	16	20,6	10	27	235
SKYROS	24,48	38,96	15,2	18,5	11,6	10	250
ARGOSTOLI	20,50	38,12	16,3	19,8	11,8	16	242
ARAXOS	21,42	38,15	16,3	20,7	10,4	20	251
TANAGRA	23,57	38,33	16	20,9	8,6	16	277
HIOS	26,13	38,35	16,7	19,9	11,8	19	238
PYRGOS	21,42	37,67					
TRIPOLI	22,40	37,52	13,2	19	4,8	32	262
TATOI	23,78	38,10	16	20,6	9,2	5	
HELLINIKO	23,73	37,90	17,4	22,2	13	3	285
ELEYSINA	23,55	38,07	17,6	21,8	11,5	8	
ZAKYNTHOS	20,88	37,75	16,5	20,6	11,9	28	262
SAMOS	26,92	37,68	17,2	20,9	12,7		
ARGOS	22,75	37,63					
KALAMATA	22,02	37,07	16,6	21,7	9,6	32	276
NAXOS	25,37	37,10					
METHONI	21,70	36,82					
MHLOS	24,43	36,73					
SPATA	23,95	37,95	16,4	20,6	10,1	3	
KOS	27,08	36,80	17,5	20,9	14,5	2	
KYTHIRA	22,98	36,15					
SANTORINI	25,41	36,41	17	19,5	13,8	8	227
SOUDA	24,12	35,55	16,8	20,6	12,6	3	260
RODOS	28,08	36,40	18,3	21,2	14,9	14	283
MYKONOS	25,35	37,43	16,8	20	14,4		
HRAKLEIO	25,18	35,33	17,4	20,9	12,8		274
IERAPETRA	25,73	35,02					
SITEIA	26,10	35,21	17,2	21,1	15,4	0	225
RETHYMNO	24,50	35,36					
TYMPAKI	24,76	35,06					
KASTELI	25,33	35,18	16	21,1	10,1	0	254
KARPATIOS	27,15	35,42	17,6	20,1	15,5	0	
PAROS	25,13	37,02	16,7	20,2	13,1	0	245
SYROS	24,95	37,42	16,5	19,8	13,8	1	249
IKARIA	26,35	37,68					

11,314,58,13617810,214,16,45611,314,57,89612510,713,7820210,5165,88616112,715,410,232137

**TABLE OF DEVIATIONS  
FROM NORMAL VALUES**

<b>STATION</b>	<b>TMEAN ( deviation ) (I)</b>	<b>PRECI (deviation % ) (II)</b>
SERRES	1,4	101
FLORINA		
THESSALONIKI	1	61
ALEXANDROUPOLI	1	73
KOZANI	0,5	65
KERKYRA	1,1	34
IOANNINA	0,9	58
LARISA	1,1	48
LIMNOS	0,9	50
AGHIALOS	1,2	128
MYTILINI	1,5	26
AGRINIO		
SKYROS	0	46
ARGOSTOLI	0,9	27
ARAXOS	0,9	48
HIOS	1,4	46
HELLINIKO	1,4	12
ZAKYNTHOS	1	55
SAMOS	1,1	-
KALAMATA	1,2	67
NAXOS		
METHONI		
SANTORINI	1,4	42
SOUDA	1	9
RODOS	1,6	58
HERAKLIO	0,8	-
SITIA	0,4	-

(I) deviation of mean temperature from normal values  
 (II) deviation of monthly precipitation height from normal values %.

# Climatic Bulletin

## General Description

Precipitation amounts were lower enough than normal values over most parts.  
The mean temperature varied higher than normal values.

### Climatic Parameters :

- ❖ **Normal Values** : normal values for various parameters (temperature, precipitation, etc) are defined as mean values calculated for 30 years. These normal values are used as basis and represent the mean situation. They can be specified in 10 daily, monthly, seasonally and yearly level and are used for the trend comparison of 10 days, month, season or year as: rainy decameron, mild winter, cool August etc.

### Measurement :

- ❖ **Precipitation**  
1 mm = 1 litre/m<sup>2</sup>

### Table Legend :

Tmean : Mean Temperature  
TN : Minimum Temperature  
TX : Maximum Temperature  
RR : Precipitation height(mm)  
INST : Sun Duration (hours)

### UTC hours (Universal Time Coordinates) in Greece :

- ❖ Winter : UTC hour = local hour - 2
- ❖ Summer : UTC hour = local hour - 3

© Hellenic National Meteorological Service  
Reproduction is prohibited without written authorization  
14 El.Venizelou 16777  
Helliniko, Athens  
Greece