




Climatic Bulletin

August 2022

 **Max
temperature**

 **Min
temperature**

 **Mean
temperature**

 **Precipitation**

 **Sunshine
duration**

August was a warm month in general. Also it was a very rainy month locally over the north mainland, the eastern parts of the Aegean area, the Dodecanese and Crete. Meanwhile strong thunderstorms caused floods and local damages between 22-27/8.



Temperature

First 10-day period

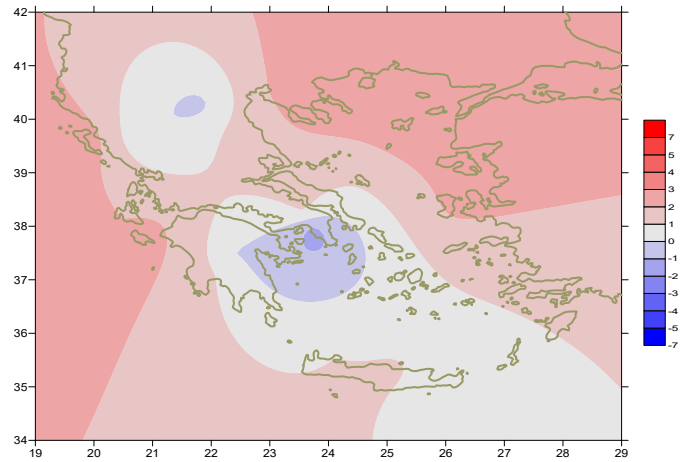
More specific (varied) :

Minimum:

from 11°C to 25°C over north mainland,
 from 16°C to 27°C over central mainland,
 from 21°C to 26°C over rest parts.

Maximum:

from 29°C to 39°C over north mainland,
 from 28°C to 36°C over central mainland,
 from 28°C to 36°C over rest parts.



Deviation of mean temperature from normal values

Second 10-day period

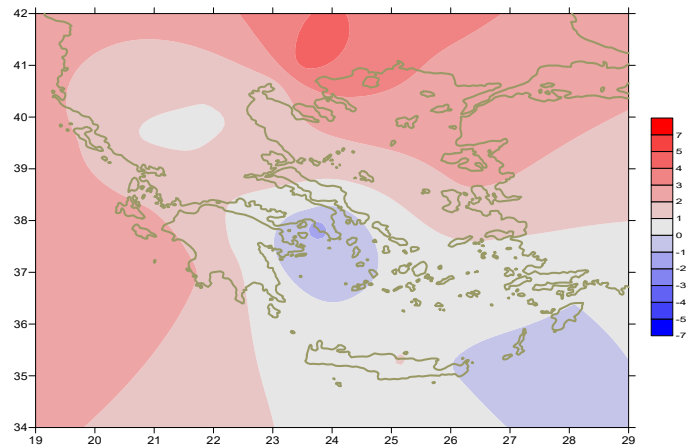
More specific (varied) :

Minimum:

from 10°C to 25°C over north mainland,
 from 13°C to 26°C over central mainland,
 from 18°C to 25°C over rest parts.

Maximum:

from 28°C to 39°C over north mainland,
 from 26°C to 41°C over central mainland,
 from 26°C to 37°C over rest parts.



Deviation of maximum temperature from normal values

Third 10-day period

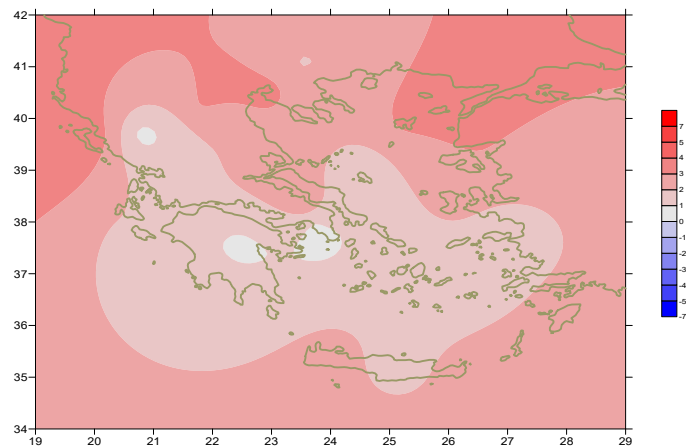
More specific (varied) :

Minimum:

from 11°C to 24°C over north mainland,
 from 14°C to 25°C over central mainland,
 from 19°C to 26°C over rest parts.

Maximum:

from 29°C to 36°C over north mainland,
 from 24°C to 35°C over central mainland,
 from 26°C to 33°C over rest parts.



Deviation of minimum temperature from normal values



P r e c i p i t a t i o n

First 10-day period

Small amounts of precipitation over north parts.

More specific:

3mm in Tithorea, 9mm in Ioannina (6/8),
5mm in Sofades (8/8), 6mm in Edessa (10/8).

Second 10-day period

Locally significant amounts of precipitation.

More specific:

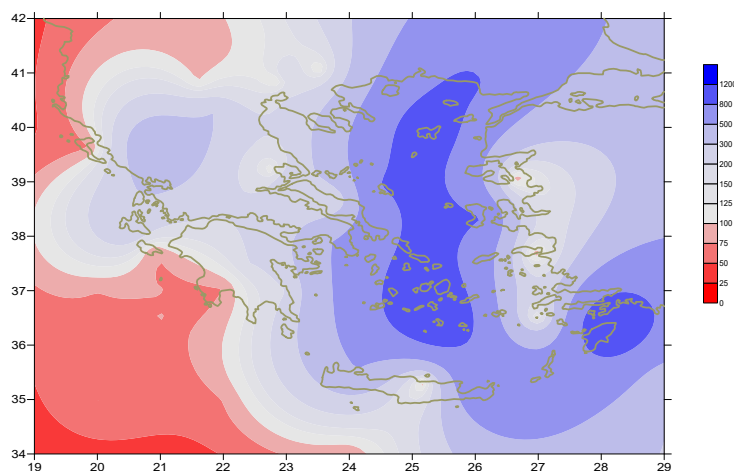
13mm in Kastoria, 24mm in Konitsa (12/8),
38mm in Argostoli, 10mm in Kerkira (13/8),
22mm in Edessa , 19mm in Skiros (14/8).

Third 10-day period

Locally large amounts of precipitation.

More specific:

30mm in Edessa, 23mm in Ioannina, 29mm in Lamia, 53mm in Tatoi (22/8),
17mm in Kavala (TEI), 13mm in Thessaloniki, 21mm in Kozani, 31mm in
Ioannina, 23mm in Desfina, 16mm in Tithorea, 25mm in Tanagra, 20mm in
Hellinikon, 15mm in Elefsina (23/8),
14mm in Karistos, 10mm in Mikonos, 15mm in Siros,
39mm in Santorini, 48mm in Sitia, 28mm in Limnos, 11mm in Rodos,
41mm in Tatoi, 16mm in Elefsina, 31mm in Kotroni (24/8),
40mm in Alexandroupoli, 19mm in Kavala, 13mm in Thessaloniki,
14mm in Edessa, 18mm in Antirio, 24mm in Tithorea,
27mm in Kasteli (25/8),
42mm in Skiros, 23mm in Limnos (26/8), 35mm in Ioannina (28/8).



**Deviation of monthly precipitation height
from normal values (%)**

TABLE OF MEAN VALUES

STATION	Longitude	Latitude	Tmean	TX	TN	RR	INST
SERRES	23,53	41,07	27,6	35,5	19,3	23	296
FLORINA	21,40	40,78					
KASTORIA	21,27	40,45	23,4	30,7	15,7	36	270
TRIKALA_IMATHIAS	22,55	40,60					
THESSALONIKI	22,97	40,52	27,8	32,2	21,4	31	295
CHRYSOUPOLI	24,62	40,92	27,1	31,6	21,1	54	313
ALEXANDROUPOLI	25,95	40,85	27,9	32,9	20,4	89	329
KOZANI	21,83	40,28	23,2	30	18,4	73	
KERKYRA	19,92	39,62	28,6	33	22,6	10	327
IOANNINA	20,82	39,70	24,3	31,7	15,5	127	267
PREVEZA	20,76	38,91	27,5	32	22,2	5	
TRIKALA_THESSALIAS	21,77	39,52					
LARISA	22,45	39,65	27,5	33,5	19,3	25	270
LIMNOS	25,23	39,92	27,2	30,7	23	73	336
ARTA	21,00	39,17					
AGHIALOS	22,78	39,21	27,7	32,3	20,9	16	312
MYTILINI	26,60	39,05	28,2	32,2	24	0	336
VELO	22,77	37,97					
AGRINIO	21,35	38,60					
LAMIA	22,43	38,87					
ANDRAVIDA	21,28	37,92					
SKYROS	24,48	38,96	26	28,5	22,5	68	324
ARGOSTOLI	20,50	38,12	27,7	31,3	23	38	353
ARAXOS	21,42	38,15	28,4	32,8	21,1		352
TANAGRA	23,57	38,33	27,6	31,9	20,6	28	347
HIOS	26,13	38,35	27,8	31	22,9	4	356
PYRGOS	21,42	37,67					
TRIPOLI	22,40	37,52	23,9	30,7	15,1	28	287
TATOI	23,78	38,10	27,3	31,5	22,1	104	
HELLINIKO	23,73	37,90	26,2	30,1	23,4	36	278
ELEYSINA	23,55	38,07	29,3	33,3	24,5	36	
ZAKYNTHOS	20,88	37,75	29	33,4	22	4	372
SAMOS	26,92	37,68	29,4	33	22,9		
ARGOS	22,75	37,63					
KALAMATA	22,02	37,07	27,3	33	19,8	5	329
NAXOS	25,37	37,10					
METHONI	21,70	36,82					
MHLOS	24,43	36,73					
SPATA	23,95	37,95	27,9	31,4	22,5	8	
KOS	27,08	36,80	27,1	31,2	23,8		
KYTHIRA	22,98	36,15					
SANTORINI	25,41	36,41					
SOUDA	24,12	35,55	26,8	30,2	22,9	7	351
RODOS	28,08	36,40	28,1	30,6	25,2	11	358
MYKONOS	25,35	37,43	26,7	29,5	23,8	9	
HRAKLEIO	25,18	35,33	27	29,5	23,2		361
IERAPETRA	25,73	35,02					
SITEIA	26,10	35,21	26	28,4	24,5	47	340
RETHYMNO	24,50	35,36					
TYMPAKI	24,76	35,06					
KASTELI	25,33	35,18	25,1	28,8	21,2	44	330
KARPATIOS	27,15	35,42	26,1	28,8	24,4		
PAROS	25,13	37,02	26,4	29,3	22,9	2	360
SYROS	24,95	37,42	27,1	29,7	24,2	15	329
IKARIA	26,35	37,68					

11,314,58,13617810,214,16,45611,314,57,89612510,713,7820210,5165,88616112,715,410,232137

**TABLE OF DEVIATIONS
FROM NORMAL VALUES**

STATION	TMEAN (deviation) (I)	PRECI (deviation %) (II)
SERRES	2,7	80
FLORINA		
THESSALONIKI	2	149
ALEXANDROUPOLI	2,7	840
KOZANI	-0,2	236
KERKYRA	2,5	56
IOANNINA	0,1	447
LARISA	1,5	161
LIMNOS	2,6	973
AGHIALOS	1,8	86
MYTILINI	2,3	0
AGRINIO		
SKYROS	1,2	660
ARGOSTOLI	2	266
ARAXOS	1,8	1
HIOS	2,2	2,000
HELLINIKO	-1,4	444
ZAKYNTHOS	2,4	44
SAMOS	1,7	1
KALAMATA	1,1	48
NAXOS		
METHONI		
SANTORINI		
SOUDA	1	467
RODOS	1,2	11,000
HERAKLIO	1,1	2
SITIA	0,2	758

(I) deviation of mean temperature from normal values
 (II) deviation of monthly precipitation height from normal values %.

Climatic Bulletin

General Description

Precipitation amounts were very higher than normal values over the most parts of the north mainland but also over few parts of east Aegean area, over the Dodecanese and over few parts of Crete as well.
The mean temperature varied higher enough than normal values.

Climatic Parameters :

- ❖ **Normal Values** : normal values for various parameters (temperature, precipitation, etc) are defined as mean values calculated for 30 years. These normal values are used as basis and represent the mean situation. They can be specified in 10 daily, monthly, seasonally and yearly level and are used for the trend comparison of 10 days, month, season or year as: rainy decameron, mild winter, cool August etc.

Measurement :

- ❖ **Precipitation**
1 mm = 1 litre/m²

Table Legend :

Tmean : Mean Temperature
TN : Minimum Temperature
TX : Maximum Temperature
RR : Precipitation height(mm)
INST : Sun Duration (hours)

UTC hours (Universal Time Coordinates) in Greece :

- ❖ Winter : UTC hour = local hour - 2
- ❖ Summer : UTC hour = local hour - 3

© Hellenic National Meteorological Service
Reproduction is prohibited without written authorization
14 El.Venizelou 16777
Helliniko, Athens
Greece