




Climatic Bulletin

October 2022

 **Max
temperature**

 **Min
temperature**

 **Mean
temperature**

 **Precipitation**

 **Sunshine
duration**

In October the temperature values were higher than the normal ones over the northern parts of Greece. Also intensive, long-lasting precipitation recorded over Crete (15/10) causing significant local floods, mainly in the area of Sitia and Heraklion as well.



Temperature

First 10-day period

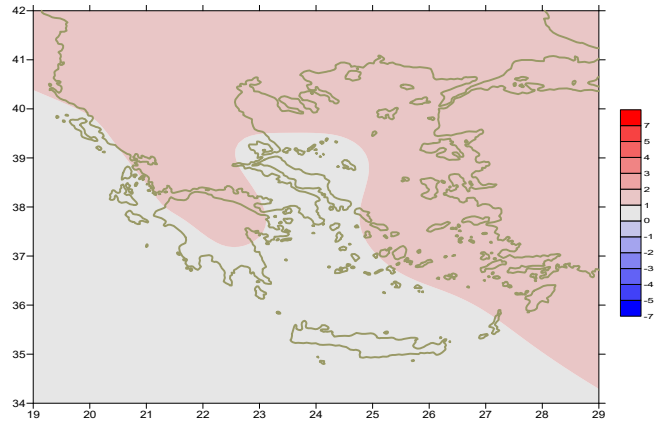
More specific (varied) :

Minimum:

from 0°C to 19°C over north mainland,
 from 6°C to 21°C over central mainland,
 from 15°C to 26°C over rest parts.

Maximum:

from 16°C to 33°C over north mainland,
 from 19°C to 34°C over central mainland,
 from 21°C to 37.5°C over rest parts.



Deviation of mean temperature from normal values

Second 10-day period

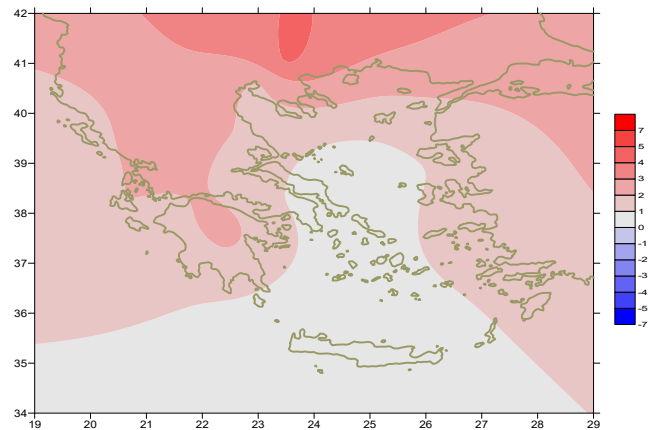
More specific (varied) :

Minimum:

from 2°C to 14°C over north mainland,
 from 7°C to 19°C over central mainland,
 from 12°C to 20°C over rest parts.

Maximum:

from 12°C to 25°C over north mainland,
 from 14°C to 28°C over central mainland,
 from 17°C to 25°C over rest parts.



Deviation of maximum temperature from normal values

Third 10-day period

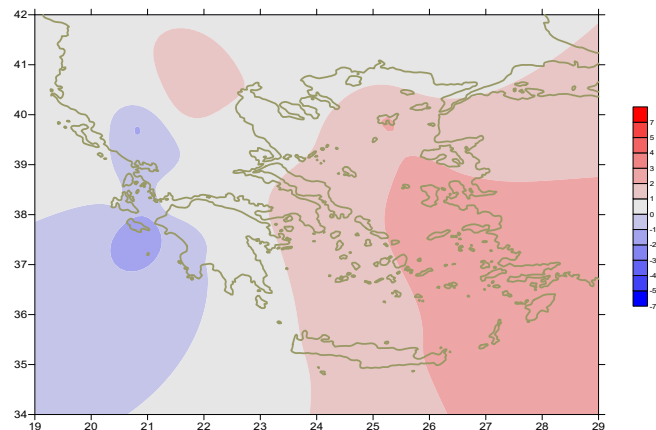
More specific (varied) :

Minimum:

from -2°C to 15°C over north mainland,
 from 4°C to 17°C over central mainland,
 from 9°C to 20°C over rest parts.

Maximum:

from 16°C to 29°C over north mainland,
 from 19°C to 29°C over central mainland,
 from 19°C to 26°C over rest parts.



Deviation of minimum temperature from normal values



P r e c i p i t a t i o n

First 10-day period

Locally very small amounts of precipitation.

More specific:

2mm in Edessa, 2mm in Kastoria, 2mm in Konitsa (2/10),
2mm in Alexandroupoli (3/10),
12mm in Skyros, 2mm in Limnos (4/10), 2mm in Kalamata (5/10).

Second 10-day period

Very large amounts of precipitation in the middle of the month .

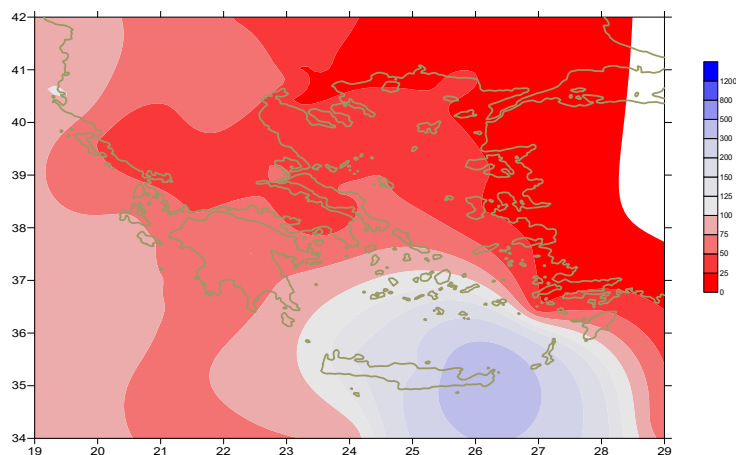
More specific:

23mm in Ioannina, 20mm in Krkyra (11/10),
17mm in Argostoli, 12mm in Skiathos (12/10),
24mm in Edessa, 41mm in Kastoria, 28mm in Kozani, 30mm in Konitsa,
61mm in Argostoli, 30mm in Kerkira, 96mm in Zakynthos, 50mm in Adravida,
23mm in Araxos, 22mm in Kalamata, 31mm in Methoni, 17mm in Antirio,
24mm in Aghialos, 23mm in Argos, 23mm in Leonidio, 14mm in Elefsina (14/10),
15mm in Zakynthos, 40mm in Oreoi, 22mm in Astros, 16mm in Tripoli,
21mm in Leonidio, 143mm in Heraklion, 111mm in Souda, 83mm in Kasteli,
46mm in Kerkira, 26mm in Elefsina, 16mm in Rodos (15/10).

Third 10-day period

More specific:

Lack of precipitation



**Deviation of monthly precipitation height
from normal values (%)**

TABLE OF MEAN VALUES

STATION	Longitude	Latitude	Tmean	TX	TN	RR	INST
SERRES	23,53	41,07	17,4	25,2	9,2	2	219
FLORINA	21,40	40,78					
KASTORIA	21,27	40,45	14,2	22,4	6	53	229
TRIKALA_IMATHIAS	22,55	40,60					
THESSALONIKI	22,97	40,52	17,5	23	11,5	4	230
CHRYSOUPOLI	24,62	40,92	17	22,7	11	3	254
ALEXANDROUPOLI	25,95	40,85	16,9	22,8	10,4	6	261
KOZANI	21,83	40,28	15,1	21,6	9,9	32	
KERKYRA	19,92	39,62	19,3	24,6	14,3	54	258
IOANNINA	20,82	39,70	16,1	23,9	7,3	24	247
PREVEZA	20,76	38,91	20,1	25	15,4	12	
TRIKALA_THESSALIAS	21,77	39,52					
LARISA	22,45	39,65	17,3	24,2	9,8	13	218
LIMNOS	25,23	39,92	18,1	21,5	14,5	2	253
ARTA	21,00	39,17					
AGHIALOS	22,78	39,21	17,6	23,2	12,3	26	240
MYTILINI	26,60	39,05	19,5	22,6	16,4	0	257
VELO	22,77	37,97					
AGRINIO	21,35	38,60					
LAMIA	22,43	38,87					
ANDRAVIDA	21,28	37,92	19,1	25,4	12,3	60	262
SKYROS	24,48	38,96	18,8	21	16,6	17	237
ARGOSTOLI	20,50	38,12	20,4	24,7	16	86	277
ARAXOS	21,42	38,15	20,1	25,3	14,3	27	281
TANAGRA	23,57	38,33	17,9	23,1	12,7	9	232
HIOS	26,13	38,35	19,8	22,6	15,9		267
PYRGOS	21,42	37,67					
TRIPOLI	22,40	37,52	15,7	22,7	8,4	48	249
TATOI	23,78	38,10	18,4	23,3	14,2	3	
HELLINIKO	23,73	37,90					
ELEYSINA	23,55	38,07	20,5	24,6	16,6	40	
ZAKYNTHOS	20,88	37,75	20	24,8	13,8	111	284
SAMOS	26,92	37,68	21,2	24,7	17,1	0	
ARGOS	22,75	37,63					
KALAMATA	22,02	37,07	19,5	25,9	13,1	34	273
NAXOS	25,37	37,10					
METHONI	21,70	36,82					
MHLOS	24,43	36,73					
SPATA	23,95	37,95	19,5	23,2	15,5	3	
KOS	27,08	36,80	21,7	25,5	18,9		
KYTHIRA	22,98	36,15					
SANTORINI	25,41	36,41					
SOUDA	24,12	35,55	19,3	22,8	16,2	123	207
RODOS	28,08	36,40	22,3	25	19,6	28	274
MYKONOS	25,35	37,43	19,7	22,2	17,8		
HRAKLEIO	25,18	35,33	20,5	22,9	17,8	143	234
IERAPETRA	25,73	35,02					
SITEIA	26,10	35,21	20,2	21,8	18,8	293	213
RETHYMNO	24,50	35,36					
TYMPAKI	24,76	35,06					
KASTELI	25,33	35,18	18	21,4	15,4	88	216
KARPATIOS	27,15	35,42					
PAROS	25,13	37,02	19,9	22,8	17,5		256
SYROS	24,95	37,42	20,2	22,3	18,3		269
IKARIA	26,35	37,68					

11,314,58,13617810,214,16,45611,314,57,89612510,713,7820210,5165,88616112,715,410,232137

**TABLE OF DEVIATIONS
FROM NORMAL VALUES**

STATION	TMEAN (deviation) (I)	PRECI (deviation %) (II)
SERRES	4.2	5
FLORINA		
THESSALONIKI	1.8	10
ALEXANDROUPOLI	2.6	12
KOZANI	2.7	63
KERKYRA	1.4	37
IOANNINA	2.5	25
LARISA	2.1	28
LIMNOS	1.4	6
AGHIALOS	1.6	40
MYTILINI	1.1	0
AGRINIO		
SKYROS	0.5	44
ARGOSTOLI	2	80
ARAXOS	1.9	32
HIOS	1.1	0
HELLINIKO		
ZAKYNTHOS	1.8	76
SAMOS	1.7	0
KALAMATA	1.3	34
NAXOS		
METHONI		
SANTORINI		
SOUDA	0.3	154
RODOS	1.7	44
HERAKLIO	0.6	208
SITIA	0.1	511

(I) deviation of mean temperature from normal values
 (II) deviation of monthly precipitation height from normal values %.

Climatic Bulletin

General Description

Precipitation amounts were very lower than normal values with exception of Crete where they were higher enough. The mean temperature varied higher than normal values.

Climatic Parameters :

- ❖ **Normal Values** : normal values for various parameters (temperature, precipitation, etc) are defined as mean values calculated for 30 years. These normal values are used as basis and represent the mean situation. They can be specified in 10 daily, monthly, seasonally and yearly level and are used for the trend comparison of 10 days, month, season or year as: rainy decameron, mild winter, cool August etc.

Measurement :

- ❖ **Precipitation**
1 mm = 1 litre/m²

Table Legend :

Tmean : Mean Temperature
 TN : Minimum Temperature
 TX : Maximum Temperature
 RR : Precipitation height(mm)
 INST : Sun Duration (hours)

UTC hours (Universal Time Coordinates) in Greece :

- ❖ Winter : UTC hour = local hour - 2
- ❖ Summer : UTC hour = local hour - 3

© Hellenic National Meteorological Service
 Reproduction is prohibited without written authorization
 14 El.Venizelou 16777
 Helliniko, Athens
 Greece