




Climatic Bulletin

November 2022

 **Max
temperature**

 **Min
temperature**

 **Mean
temperature**

 **Precipitation**

 **Sunshine
duration**

November characterized by increased mean temperature values, mainly over the central and north parts of Greece due to the long-lasting south winds prevailed. Meanwhile significant local precipitation recorded and the mountainous mainland covered by great amounts of snow, during the last ten days.



Temperature

First 10-day period

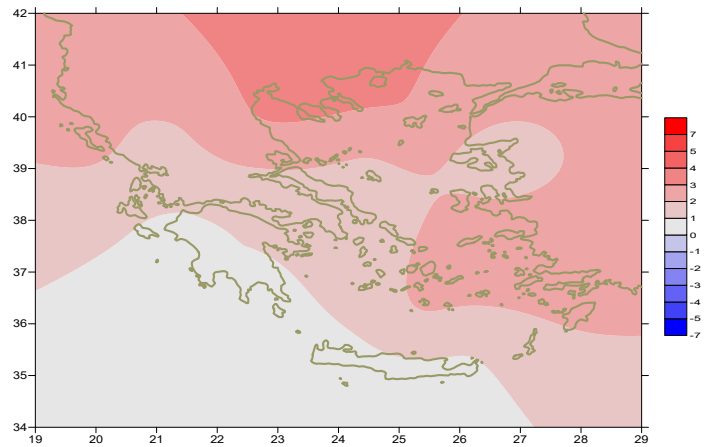
More specific (varied) :

Minimum:

from 0.3°C to 16°C over north mainland,
 from 3°C to 19°C over central mainland,
 from 9°C to 18°C over rest parts.

Maximum:

from 11°C to 29°C over north mainland,
 from 15°C to 29°C over central mainland,
 from 18°C to 27°C over rest parts.



Deviation of mean temperature from normal values

Second 10-day period

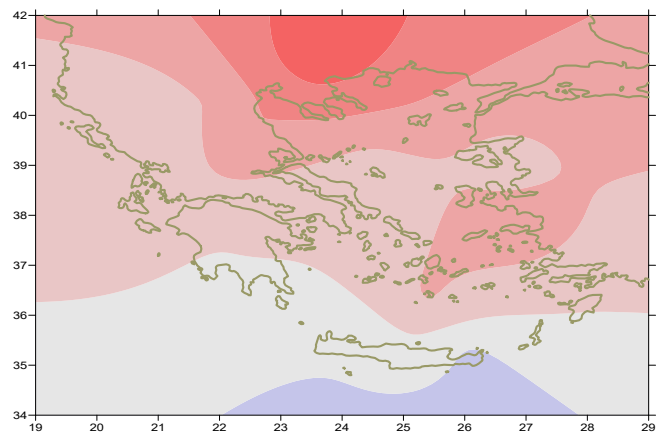
More specific (varied) :

Minimum:

from 0.5°C to 17°C over north mainland,
 from 4°C to 19°C over central mainland,
 from 8°C to 20°C over rest parts.

Maximum:

from 9°C to 24°C over north mainland,
 from 9°C to 26°C over central mainland,
 from 18°C to 24°C over rest parts.



Deviation of maximum temperature from normal values

Third 10-day period

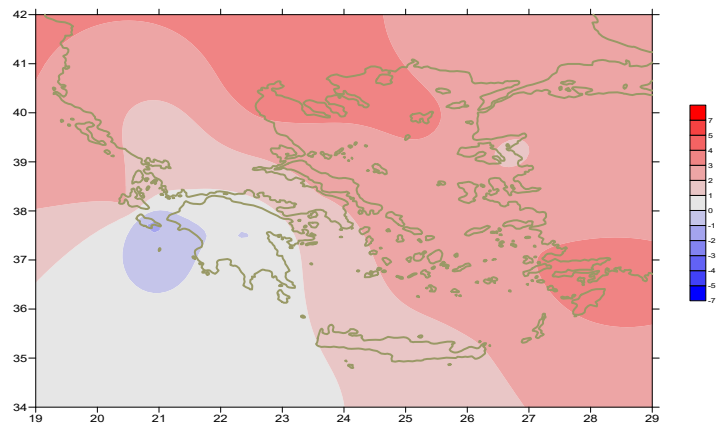
More specific (varied) :

Minimum:

from -5°C to 17°C over north mainland,
 from -0.5°C to 19°C over central mainland,
 from 8°C to 20°C over rest parts.

Maximum:

from 4°C to 21°C over north mainland,
 from 4°C to 23°C over central mainland,
 from 13°C to 24°C over rest parts.



Deviation of minimum temperature from normal values



P r e c i p i t a t i o n

First 10-day period

Locally significant amounts of precipitation.

More specific:

24mm in Preveza/Aktio, 19mm in Ioannina, 21mm in Konitsa, 25mm in Zakynthos, 20mm in Andravida, 36mm in Kerkira (5/11), 49mm in Edessa, 44mm in Polikastro, 22mm in Kozani, 37mm in Argostoli, 34mm in Preveza/Aktio, 37mm in Argostoli, 44mm in Zakynthos, 38mm in Kalamata, 28mm in Kerkira, 27mm in Methoni, 31mm in Aghialos, 22mm in Desfina, 22mm in Karistos, 26mm in Tripoli, 21m in Kithira, 37mm in Paros, 22mm in Leros, 40mm in Tatoi, 33mm in Elefsina, 25mm in N. Filadelfia (6/11), 23mm in Oreoi, 18mm in Gavdos (7/11).

Second 10-day period

Locally moderate amounts of precipitation .

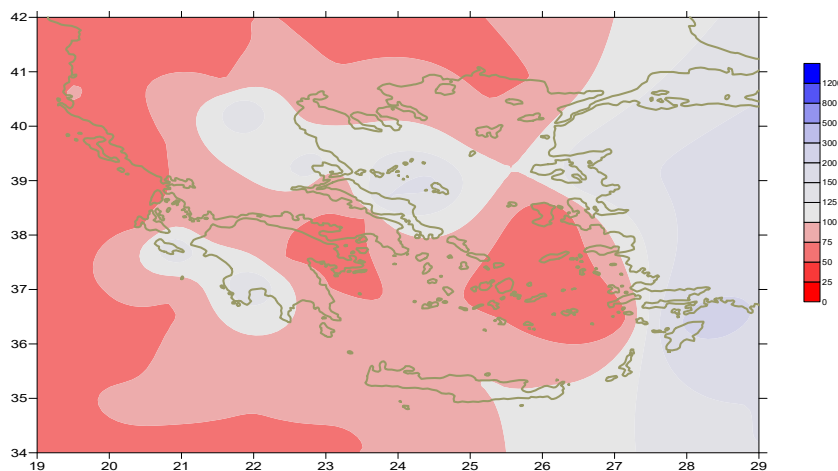
More specific:

1mm in Ormenio, 14mm in Methoni, 13mm in Lamia, 34mm in Oreoi (12/11), 11mm in Kastoria, 21mm in Zakynthos (13/11), 20mm in Ioannina, 16mm in Konitsa (17/11), 70mm in Preveza/Aktio, 34mm in Andravida (18/11).

Third 10-day period

More specific:

18mm in Alexandroupoli, 14mm in Thessaloniki, 16mm in Serres, 32mm in Preveza, 19mm in Konitsa, 21mm in Argostoli, 22mm in Antirio (21/11), 27mm in Doxato, 27mm in Alexandroupoli, 23mm in Ioannina, 20mm in Araxos, 20mm in Methoni, 22mm in Kalamata, 25mm in Mitilini, 40mm in Gavdos (23/11), 54mm in Mitilini (24/11), 35mm in Skiros, 32mm in Oreoi, 32mm in Souda, 24mm in Leros, 34mm in Kos, 72mm in Rodos (28/11), 34mm in Heraklion, 26mm in Kastelli, 99mm in Rodos (29/11), 60mm in Leonidio, 20mm in Tatoi, 20mm in Kotroni (30/11).



**Deviation of monthly precipitation height
from normal values (%)**

TABLE OF MEAN VALUES

STATION	Longitude	Latitude	Tmean	TX	TN	RR	INST
SERRES	23,53	41,07	12,8	18,5	7,6	36	147
FLORINA	21,40	40,78					
KASTORIA	21,27	40,45	9,4	15,3	4,2	63	115
TRIKALA_IMATHIAS	22,55	40,60					
THESSALONIKI	22,97	40,52	14,6	18,7	10,3	38	161
CHRYSOUPOLI	24,62	40,92	13,5	18	9,3	47	155
ALEXANDROUPOLI	25,95	40,85	13,7	18,2	9,1	50	140
KOZANI	21,83	40,28	10,2	15,2	6,5	63	
KERKYRA	19,92	39,62	16,4	20,2	12,8	91	125
IOANNINA	20,82	39,70	11,6	16,9	5,8	123	116
PREVEZA	20,76	38,91	16,3	20,3	13,2	223	
TRIKALA_THESSALIAS	21,77	39,52					
LARISA	22,45	39,65	13,5	19	8,2	56	130
LIMNOS	25,23	39,92	15,2	18	12,5	42	164
ARTA	21,00	39,17					
AGHIALOS	22,78	39,21	14,3	19,36	10,2	88	151
MYTILINI	26,60	39,05	15,9	18,9	13,3	107	145
VELO	22,77	37,97					
AGRINIO	21,35	38,60					
LAMIA	22,43	38,87					
ANDRAVIDA	21,28	37,92	15,4	20,6	10,8	119	166
SKYROS	24,48	38,96	16,4	18,7	14,5	84	148
ARGOSTOLI	20,50	38,12	17,4	20,6	14,5	122	177
ARAXOS	21,42	38,15	15,6	20,6	11	80	182
TANAGRA	23,57	38,33	14,4	19,1	9,9	38	147
HIOS	26,13	38,35	15,9	19,2	12,9	30	175
PYRGOS	21,42	37,67					
TRIPOLI	22,40	37,52	11	16,8	4,9	84	147
TATOI	23,78	38,10	14,4	18,9	10,6	69	
HELLINIKO	23,73	37,90					
ELEYSINA	23,55	38,07	16,5	20,2	13,1	47	
ZAKYNTHOS	20,88	37,75	16,3	20,6	11,2	208	181
SAMOS	26,92	37,68	17,1	20,3	13,6		
ARGOS	22,75	37,63					
KALAMATA	22,02	37,07	15,2	21,3	10,3	160	182
NAXOS	25,37	37,10					
METHONI	21,70	36,82					
MHLOS	24,43	36,73					
SPATA	23,95	37,95	16,2	19,8	12,1	43	
KOS	27,08	36,80	18,3	21,8	16,2	66	
KYTHIRA	22,98	36,15					
SANTORINI	25,41	36,41	17,6	20	15,6	34	183
SOUDA	24,12	35,55	16,4	19,8	13,2	51	161
RODOS	28,08	36,40	18,7	21,3	16,4	196	191
MYKONOS	25,35	37,43					
HRAKLEIO	25,18	35,33	17,6	20,9	14,8	55	184
IERAPETRA	25,73	35,02					
SITEIA	26,10	35,21	17,6	20,2	15,6	61	180
RETHYMNO	24,50	35,36					
TYMPAKI	24,76	35,06					
KASTELI	25,33	35,18	14,9	18,5	12,1	52	184
KARPATIOS	27,15	35,42					
PAROS	25,13	37,02	16,8	19,5	14,7	24	181
SYROS	24,95	37,42	17,2	19,4	15,7	49	182
IKARIA	26,35	37,68					

11,314,58,13617810,214,16,45611,314,57,89612510,713,7820210,5165,88616112,715,410,232137

**TABLE OF DEVIATIONS
FROM NORMAL VALUES**

STATION	TMEAN (deviation) (I)	PRECI (deviation %) (II)
SERRES	3,7	67
FLORINA		
THESSALONIKI	3,7	66
ALEXANDROUPOLI	2,7	66
KOZANI	2,2	105
KERKYRA	2,2	50
IOANNINA	1,9	75
LARISA	2,7	96
LIMNOS	2,9	56
AGHIALOS	2,2	140
MYTILINI	1,4	114
AGRINIO		
SKYROS	1,7	156
ARGOSTOLI	1,7	76
ARAXOS	1	60
HIOS	2,1	36
HELLINIKO		
ZAKYNTHOS	0,5	131
SAMOS	2,6	0
KALAMATA	0,5	113
NAXOS		
METHONI		
SANTORINI	2,2	63
SOUDA	0,8	70
RODOS	2,3	222
HERAKLIO	1	94
SITIA	0,8	100

(I) deviation of mean temperature from normal values
 (II) deviation of monthly precipitation height from normal values %.

Climatic Bulletin

General Description

Precipitation amounts were very higher than normal values over most parts.
The mean temperature varied higher enough than normal values, mainly over central and north Greece.

Climatic Parameters :

- ❖ **Normal Values** : normal values for various parameters (temperature, precipitation, etc) are defined as mean values calculated for 30 years. These normal values are used as basis and represent the mean situation. They can be specified in 10 daily, monthly, seasonally and yearly level and are used for the trend comparison of 10 days, month, season or year as: rainy decameron, mild winter, cool August etc.

Measurement :

- ❖ **Precipitation**
1 mm = 1 litre/m²

Table Legend :

Tmean : Mean Temperature
TN : Minimum Temperature
TX : Maximum Temperature
RR : Precipitation height(mm)
INST : Sun Duration (hours)

UTC hours (Universal Time Coordinates) in Greece :

- ❖ Winter : UTC hour = local hour - 2
- ❖ Summer : UTC hour = local hour - 3

© Hellenic National Meteorological Service
Reproduction is prohibited without written authorization
14 El.Venizelou 16777
Helliniko, Athens
Greece