




Climatic Bulletin

March 2023

 **Max
temperature**

 **Min
temperature**

 **Mean
temperature**

 **Precipitation**

 **Sunshine
duration**

March characterized by alternation of high and low temperatures for the whole period. Also the mean precipitation values were higher than normal ones mainly over the north Ionian area, over Epirus and the eastern parts of Aegean sea. It is remarkable that significant amounts of snow recorded over the mountainous regions of mainland and Crete.



ΕΘΝΙΚΗ
ΜΕΤΕΩΡΟΛΟΓΙΚΗ
ΥΠΗΡΕΣΙΑ
HELLENIC NATIONAL METEOROLOGICAL SERVICE



Temperature

First 10-day period

More specific (varied) :

Minimum:

from -3°C to 11°C over north mainland,
 from 1°C to 14°C over central mainland,
 from 7°C to 14°C over rest parts.

Maximum:

from 8°C to 22°C over north mainland,
 from 9°C to 21°C over central mainland,
 from 12°C to 20°C over rest parts.

Second 10-day period

More specific (varied) :

Minimum:

from -5°C to 13°C over north mainland,
 from -2°C to 15°C over central mainland,
 from 4°C to 15°C over rest parts.

Maximum:

from 5°C to 22°C over north mainland,
 from 7°C to 22°C over central mainland,
 from 10°C to 20°C over rest parts.

Third 10-day period

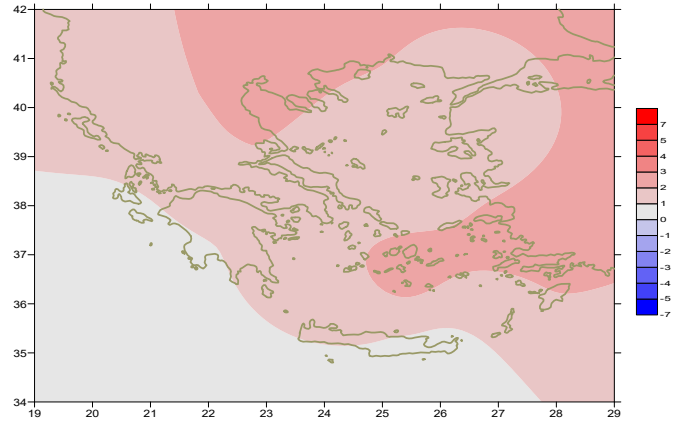
More specific (varied) :

Minimum:

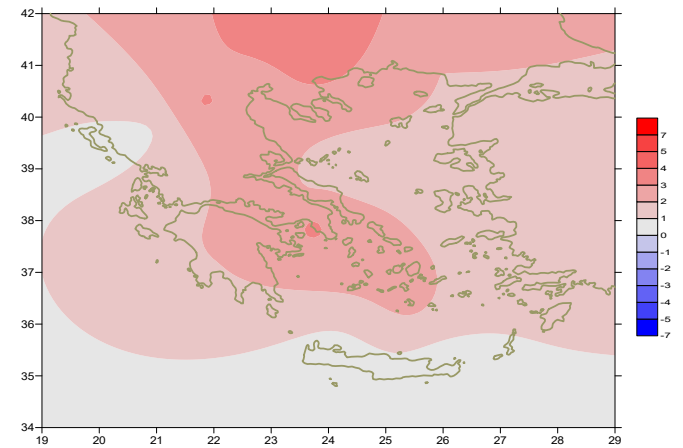
from -6°C to 10°C over north mainland,
 from -3°C to 12°C over central mainland,
 from 4°C to 15°C over rest parts.

Maximum:

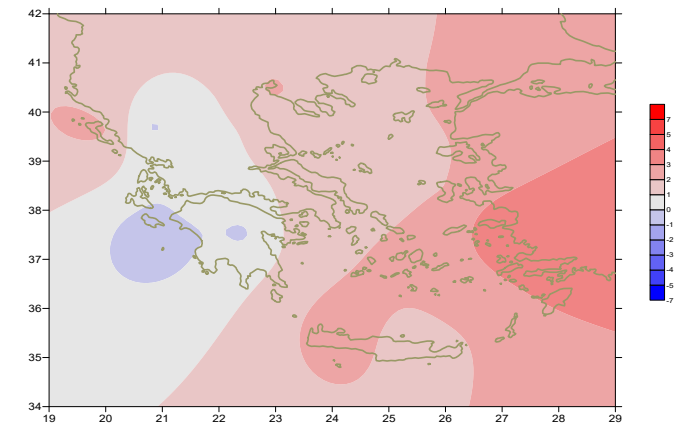
from 6°C to 25°C over north mainland,
 from 7°C to 27°C over central mainland,
 from 11°C to 22°C over rest parts.



Deviation of mean temperature from normal values



Deviation of maximum temperature from normal values



Deviation of minimum temperature from normal values



P r e c i p i t a t i o n

First 10-day period

Significant amounts of precipitation.

More specific:

13mm in Serres (1/3),
 22mm in Edessa, 19mm in Kozani, 30mm in Sofades (2/3),
 18mm in Kirenea, 17mm in Aghialos, 17mm in Lamia, 16mm in Tithorea (2/3),
 15mm in Edessa, 13mm in Polikastro, 52mm in Kerkira, 19mm in Aghialos (4/3),
 22mm in Chios, 26mm in Ikaria, 49mm in Mitilini, 14mm in Leros (5/3),
 23mm in Preveza, 30mm in Argostoli, 21mm in Kerkira, 25mm in Zakynthos,
 27mm in Adravida, 33mm in Araxos, 23mm in Antirio, 52mm in Mesologi (7/3).

Second 10-day period

Significant amounts of precipitation.

More specific:

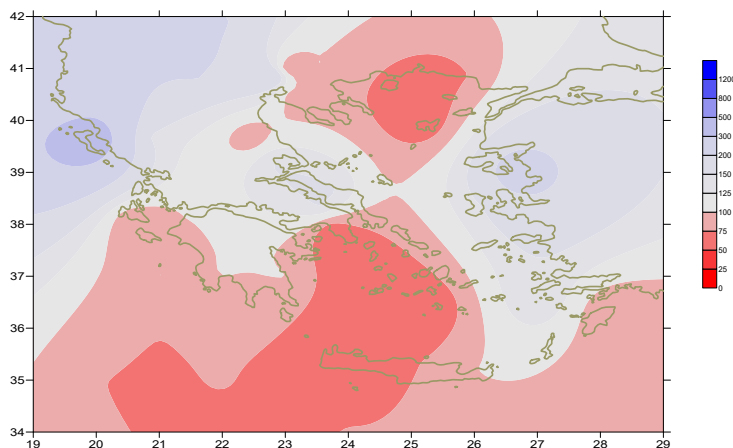
27mm in Ioannina, 18mm in Konitsa, 18mm in Antirio, 15mm in Mesologi,
 25mm in Aghialos, 11mm in Mitilini (11/3),
 26mm in Mesologi, 13mm in Kasteli, 37mm in Mitilini (12/3),
 17mm in Methoni, 16mm in Kasteli (13/3), 33mm in Kerkira (15/3),
 14mm in Alexandroupoli, 13mm in Ormenio, 15mm in Kerkira, 19mm in Methoni,
 20mm in Skiros, 27mm in Leros, 32mm in Rodos (16/3),
 12mm in Zakynthos, 32mm in Methoni, 30mm in Oreoi, 19mm in Astros,
 13mm in Argos, 15mm in Souda (17/3),
 15mm in Heraklion, 16mm in Sitia, 12mm in Kasteli (18/3).

Third 10-day period

Small amounts at the end of the period .

More specific:

6mm in Kerkira (21/3),
 12mm in Preveza, 11mm in Adravida, 14mm in Sofades,
 8mm in Karistos, 14mm in Tanagra, 8mm in Mikonos, 14mm in Leros,
 14mm in Kotroni (28/3),
 13mm in Astipalea, 9mm in Mitilini (29/3).



**Deviation of monthly precipitation height
 from normal values (%)**

TABLE OF MEAN VALUES

STATION	Longitude	Latitude	Tmean	TX	TN	RR	INST
SERRES	23,53	41,07	11,9	18,6	5,3	26	189
FLORINA	21,40	40,78					
KASTORIA	21,27	40,45	9	15,2	2	32	182
TRIKALA_IMATHIAS	22,55	40,60					
THESSALONIKI	22,97	40,52	12,1	16,2	6,6	45	203
CHRYSOUPOLI	24,62	40,92	11	15	5,8	13	182
ALEXANDROUPOLI	25,95	40,85	10,4	14,3	5,8	26	166
KOZANI	21,83	40,28	9	14,6	2,8	55	
KERKYRA	19,92	39,62	13,4	17,1	9	390	202
IOANNINA	20,82	39,70	10,1	15,6	3,2	79	169
PREVEZA	20,76	38,91	13,6	17,2	8,9	78	
TRIKALA_THESSALIAS	21,77	39,52					
LARISA	22,45	39,65	11,6	17,5	4,5	22	188
LIMNOS	25,23	39,92	11,8	14,9	8,1	17	191
ARTA	21,00	39,17					
AGHIALOS	22,78	39,21	12	16,7	6	62	201
MYTILINI	26,60	39,05	13,5	16,6	10,4	176	194
VELO	22,77	37,97					
AGRINIO	21,35	38,60					
LAMIA	22,43	38,87					
ANDRAVIDA	21,28	37,92	12,8	17,3	7,1	68	218
SKYROS	24,48	38,96	12,8	15,6	10,1	42	212
ARGOSTOLI	20,50	38,12	14	17,3	10,1	54	240
ARAXOS	21,42	38,15	13,5	17,8	8,3	55	235
TANAGRA	23,57	38,33	12	17	6,1	57	205
HIOS	26,13	38,35	13,4	16,5	9,5	79	217
PYRGOS	21,42	37,67					
TRIPOLI	22,40	37,52	9,3	15,4	2,4	68	218
TATOI	23,78	38,10					
HELLINIKO	23,73	37,90	14,3	19	10,4	5	225
ELEYSINA	23,55	38,07	13,9	18,4	9	23	
ZAKYNTHOS	20,88	37,75	13,7	17,9	8,1	62	240
SAMOS	26,92	37,68	14,4	17,1	11,4		
ARGOS	22,75	37,63					
KALAMATA	22,02	37,07	13,3	19,2	7,2	58	236
NAXOS	25,37	37,10					
METHONI	21,70	36,82					
MHLOS	24,43	36,73					
SPATA	23,95	37,95	13,1	17,3	7,7	16	
KOS	27,08	36,80	15,1	17,4	12,8	21	
KYTHIRA	22,98	36,15					
SANTORINI	25,41	36,41	15,1	17,4	12,2	22	213
SOUDA	24,12	35,55	13,8	17,1	11,2	25	210
RODOS	28,08	36,40	15,7	18,3	13,2	56	238
MYKONOS	25,35	37,43	13,4	15,7	12,3	33	
HRAKLEIO	25,18	35,33	14,6	17,7	11,5	36	213
IERAPETRA	25,73	35,02					
SITEIA	26,10	35,21	14,4	17,4	12,1	51	194
RETHYMNO	24,50	35,36					
TYMPAKI	24,76	35,06					
KASTELI	25,33	35,18	12,3	16	8,4	52	170
KARPATHOS	27,15	35,42	15,8	18,2	14,8	19	
PAROS	25,13	37,02	14,3	16,7	11,3	25	215
SYROS	24,95	37,42	14,1	17	11,7	14	226
IKARIA	26,35	37,68					

11,314,58,13617810,214,16,45611,314,57,89612510,713,7820210,5165,88616112,715,410,232137

**TABLE OF DEVIATIONS
FROM NORMAL VALUES**

STATION	TMEAN (deviation) (I)	PRECI (deviation %) (II)
SERRES	2.2	79
FLORINA		
THESSALONIKI	2.5	99
ALEXANDROUPOLI	1.9	50
KOZANI	2	131
KERKYRA	1.3	396
IOANNINA	10.2	80
LARISA	2.1	61
LIMNOS	1.9	33
AGHIALOS	2	119
MYTILINI	1.7	234
AGRINIO		
SKYROS	1.1	82
ARGOSTOLI	0.9	65
ARAXOS	1.2	92
HIOS	1.6	108
HELLINIKO	1.9	11
ZAKYNTHOS	0.8	69
SAMOS	2.2	-
KALAMATA	0.9	81
NAXOS		
METHONI		
SANTORINI	2.4	37
SOUDA	1.2	31
RODOS	2.1	74
HERAKLIO	1	63
SITIA	0.6	91

(I) deviation of mean temperature from normal values
 (II) deviation of monthly precipitation height from normal values %.

Climatic Bulletin

General Description

Precipitation amounts were lower than normal values over the most parts.
The mean temperature varied higher than normal values.

Climatic Parameters :

- ❖ **Normal Values** : normal values for various parameters (temperature, precipitation, etc) are defined as mean values calculated for 30 years. These normal values are used as basis and represent the mean situation. They can be specified in 10 daily, monthly, seasonally and yearly level and are used for the trend comparison of 10 days, month, season or year as: rainy decameron, mild winter, cool August etc.

Measurement :

- ❖ **Precipitation**
1 mm = 1 litre/m²

Table Legend :

Tmean : Mean Temperature
TN : Minimum Temperature
TX : Maximum Temperature
RR : Precipitation height(mm)
INST : Sun Duration (hours)

UTC hours (Universal Time Coordinates) in Greece :

- ❖ Winter : UTC hour = local hour - 2
- ❖ Summer : UTC hour = local hour - 3

© Hellenic National Meteorological Service
Reproduction is prohibited without written authorization
14 El.Venizelou 16777
Helliniko, Athens
Greece