




# Climatic Bulletin

May 2023

 Max  
temperature

 Min  
temperature

 Mean  
temperature

 Precipitation

 Sunshine  
duration

May was cooler than normal levels mainly over the central and north parts of Greece.  
Also the mean precipitation values were higher than normal ones almost everywhere. Meanwhile floods recorded locally over the eastern parts of Rodos island (28/5), in the down town of Thessaloniki (31/5) and locally over the western parts of Attica (31/5).



# Temperature

### First 10-day period

More specific (varied) :

**Minimum:**

from 4°C to 15°C over north mainland,  
 from 6°C to 18°C over central mainland,  
 from 9°C to 18°C over rest parts.

**Maximum:**

from 12°C to 28°C over north mainland,  
 from 16°C to 29°C over central mainland,  
 from 19°C to 27°C over rest parts.

### Second 10-day period

More specific (varied) :

**Minimum:**

from 3°C to 17°C over north mainland,  
 from 7°C to 16°C over central mainland,  
 from 10°C to 19°C over rest parts.

**Maximum:**

from 13°C to 29°C over north mainland,  
 from 13°C to 31°C over central mainland,  
 from 17°C to 31°C over rest parts.

### Third 10-day period

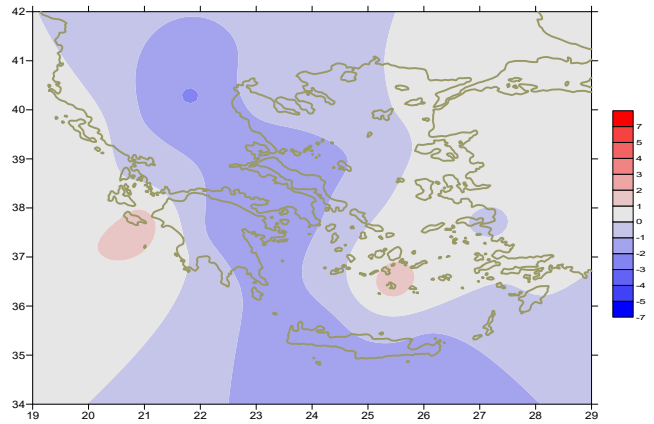
More specific (varied) :

**Minimum:**

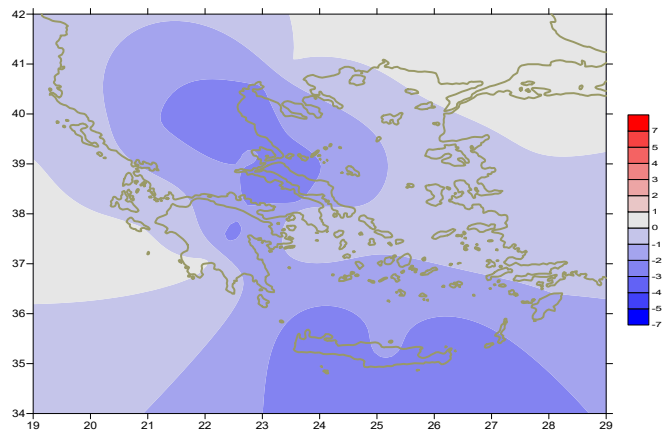
from 7°C to 17°C over north mainland,  
 from 9°C to 19°C over central mainland,  
 from 15°C to 19°C over rest parts.

**Maximum:**

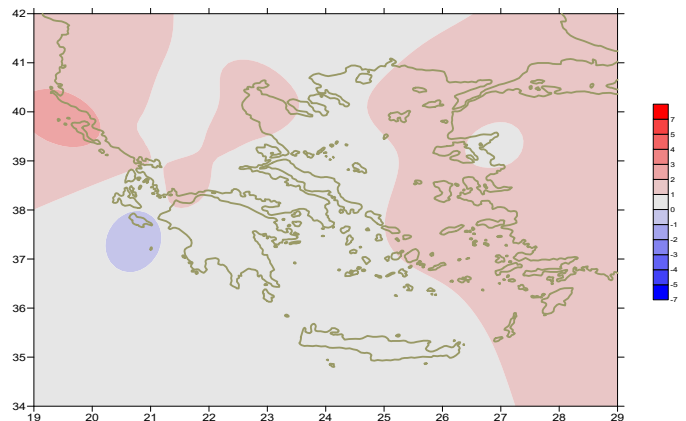
from 16°C to 30°C over north mainland,  
 from 16°C to 30°C over central mainland,  
 from 19°C to 29°C over rest parts.



*Deviation of mean temperature from normal values*



*Deviation of maximum temperature from normal values*



*Deviation of minimum temperature from normal values*



## P r e c i p i t a t i o n

### First 10-day period

Locally large amounts of precipitation.

More specific:

16mm in Othonoi, 15mm in Tripoli, 10mm in Leonidio (2/5),  
 19mm in Edessa, 18mm in Kastoria, 21mm in Kozani, 31mm in Ioannina,  
 18mm in Konitsa, 16mm in Mesologi, 18mm in Larisa, 46mm in Kranea,  
 35mm in Skiathos, 12mm in Lamia, 12mm in Tripoli, 12mm in Astros (3/5),  
 26mm in Preveza, 12mm in Ioannina, 21mm in Argostoli (4/5),  
 33mm in Skiathos, 20mm in Oreoi, 132mm in Souda, 23mm in Icaria (5/5),  
 17mm in Karpathos (6/5), 62mm in Edessa, 21mm in Thessaloniki,  
 25mm in Kastoria, 13mm in Polikastro (9/5),  
 21mm in Ioannina, 10mm in Larisa (10/5).

### Second 10-day period

Moderate amounts of precipitation locally over north parts.

More specific:

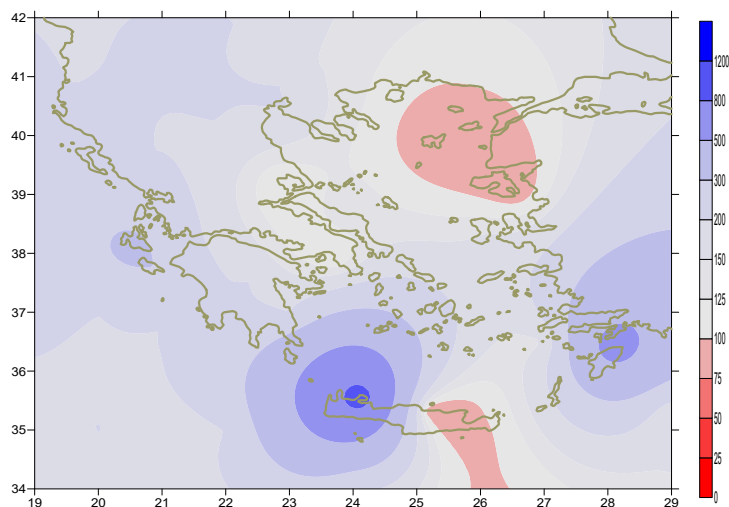
7mm in Kastoria (11 /5),  
 17mm in Konitsa, 21mm in Kastoria, 9mm in Zakynthos (16/5),  
 12mm in Doxato, 26mm in Kerkira (17/5),  
 13mm in Chrisoupoli/Kavala (18/5).

### Third 10-day period

Lacally significant amounts of precipitation.

More specific:

12mm in Adravidia, 13mm in Araxos (21/5),  
 56mm in Astros, 17mm in Tripoli (22/5),  
 20mm in Polikastro, 11mm in Ormenio (25/5).  
 24mm in Kozani, 10mm in Kalamata (27/5),  
 73mm in Rodos (28/5),  
 13mm in Serres, 14mm in Kozani (30/5),  
 35mm in Edessa, 14mm in Kastoria, 10mm in Elefsina,  
 22mm in Sofades (31/5).



**Deviation of monthly precipitation height  
from normal values (%)**

TABLE OF MEAN VALUES

STATION	Longitude	Latitude	Tmean	TX	TN	RR	INST
SERRES	23,53	41,07	18,7	25,1	12,5	67	171
FLORINA	21,40	40,78					
KASTORIA	21,27	40,45	14,7	20,2	9,5	143	142
TRIKALA_IMATHIAS	22,55	40,60					
THESSALONIKI	22,97	40,52	18,9	22,4	13,6	81	172
CHRYSOUPOLI	24,62	40,92					
ALEXANDROUPOLI	25,95	40,85	18,6	22,8	12,3	28	209
KOZANI	21,83	40,28	14,6	19,4	9,9	107	
KERKYRA	19,92	39,62	20,3	23,5	15,3	82	212
IOANNINA	20,82	39,70	16,6	21,5	10,4	122	134
PREVEZA	20,76	38,91	19,7	23,2	15,6	55	
TRIKALA_THESSALIAS	21,77	39,52					
LARISA	22,45	39,65	18,4	23,1	12,1	48	174
LIMNOS	25,23	39,92	18,3	21,3	14,3	6	239
ARTA	21,00	39,17					
AGHIALOS	22,78	39,21	18,5	22,2	12,7	30	202
MYTILINI	26,60	39,05	20,3	23,6	16	14	256
VELO	22,77	37,97					
AGRINIO	21,35	38,60					
LAMIA	22,43	38,87					
ANDRAVIDA	21,28	37,92					
SKYROS	24,48	38,96	18,1	20,1	15,1	9	239
ARGOSTOLI	20,50	38,12	19,6	22,4	15,2	62	240
ARAXOS	21,42	38,15	19,9	23,7	14,2	41	220
TANAGRA	23,57	38,33	18,6	22,5	11,9	14	227
HIOS	26,13	38,35	19,9	22,6	15,4	15	267
PYRGOS	21,42	37,67					
TRIPOLI	22,40	37,52	15,2	20,5	8,7	68	173
TATOI	23,78	38,10	18,7	22,5	13,3	22	
HELLINIKO	23,73	37,90	19,1	24	16,5	13	212
ELEYSINA	23,55	38,07	20,7	24,4	15,7	17	
ZAKYNTHOS	20,88	37,75	20,2	23,4	13,9	50	254
SAMOS	26,92	37,68	20,4	24,3	15,2		
ARGOS	22,75	37,63					
KALAMATA	22,02	37,07	19,5	24,5	13	41	212
NAXOS	25,37	37,10					
METHONI	21,70	36,82					
MHLOS	24,43	36,73					
SPATA	23,95	37,95	19,4	22,7	14,1	8	
KOS	27,08	36,80	19,5	22,5	16,9	20	
KYTHIRA	22,98	36,15					
SANTORINI	25,41	36,41					
SOUDA	24,12	35,55	18,4	21,5	15,3	120	214
RODOS	28,08	36,40	20,6	23,3	17,7	84	256
MYKONOS	25,35	37,43	18,5	21,2	16	13	
HRAKLEIO	25,18	35,33	19,4	21,8	15,3	10	225
IERAPETRA	25,73	35,02					
SITEIA	26,10	35,21	18,9	20,8	16	11	200
RETHYMNO	24,50	35,36					
TYMPAKI	24,76	35,06					
KASTELI	25,33	35,18	17,4	21	13,4	22	186
KARPATOS	27,15	35,42	19,6	22,1	18,1	21	
PAROS	25,13	37,02	19,4	21,7	15,7	3	266
SYROS	24,95	37,42	19,1	21,7	16,7	11	259
IKARIA	26,35	37,68					

11,314,58,13617810,214,16,45611,314,57,89612510,713,7820210,5165,88616112,715,410,232137

**TABLE OF DEVIATIONS  
FROM NORMAL VALUES**

<b>STATION</b>	<b>TMEAN ( deviation) (I)</b>	<b>PRECI (deviation % ) (II)</b>
SERRES	-0.8	137
FLORINA		
THESSALONIKI	-0.6	184
ALEXANDROUPOLI	0.3	77
KOZANI	-2.2	186
KERKYRA	0.7	226
IOANNINA	-0.8	182
LARISA	-1.2	129
LIMNOS	-0.1	26
AGHIALOS	-1	80
MYTILINI	0.1	66
AGRINIO		
SKYROS	-1.2	51
ARGOSTOLI	0.1	326
ARAXOS	0.1	219
HIOS		128
HELLINIKO	-1.5	90
ZAKYNTHOS	0.4	294
SAMOS	-0.1	-
KALAMATA	-0.3	180
NAXOS		
METHONI		
SANTORINI		
SOUDA	-1.6	923
RODOS	0.1	600
HERAKLIO	-0.9	66
SITIA	-1.5	85

(I) deviation of mean temperature from normal values  
 (II) deviation of monthly precipitation height from normal values %.

# Climatic Bulletin

## General Description

Precipitation amounts were higher than normal values over most parts.  
The mean temperature varied lower than normal values, mainly over central and north mainland.

### Climatic Parameters :

- ❖ **Normal Values** : normal values for various parameters (temperature, precipitation, etc) are defined as mean values calculated for 30 years. These normal values are used as basis and represent the mean situation. They can be specified in 10 daily, monthly, seasonally and yearly level and are used for the trend comparison of 10 days, month, season or year as: rainy decameron, mild winter, cool August etc.

### Measurement :

- ❖ **Precipitation**  
1 mm = 1 litre/m<sup>2</sup>

### Table Legend :

T<sub>mean</sub> : Mean Temperature  
 TN : Minimum Temperature  
 TX : Maximum Temperature  
 RR : Precipitation height(mm)  
 INST : Sun Duration (hours)

### UTC hours (Universal Time Coordinates) in Greece :

- ❖ Winter : UTC hour = local hour - 2
- ❖ Summer : UTC hour = local hour - 3

© Hellenic National Meteorological Service  
 Reproduction is prohibited without written authorization  
 14 El.Venizelou 16777  
 Helliniko, Athens  
 Greece