




Climatic Bulletin

November 2023

 **Max
temperature**

 **Min
temperature**

 **Mean
temperature**

 **Precipitation**

 **Sunshine
duration**

November started with very high temperature values and several records were broken over most parts. Also the precipitation amounts were higher enough than the normal values, mainly over the west parts of Greece and over the islands of eastern Aegean and Dodecanese as well.



Temperature

First 10-day period

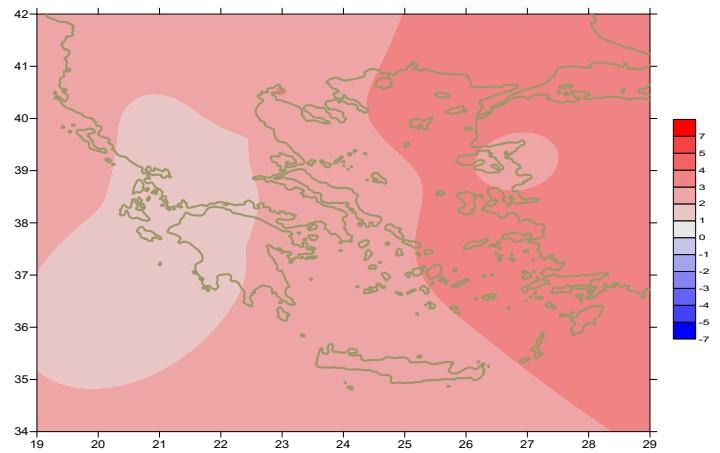
More specific (varied) :

Minimum:

from 2°C to 20°C over north mainland,
 from 6°C to 25°C over central mainland,
 from 11°C to 23°C over rest parts.

Maximum:

from 13°C to 27°C over north mainland,
 from 13°C to 29°C over central mainland,
 from 18°C to 33°C over rest parts.



Deviation of mean temperature from normal values

Second 10-day period

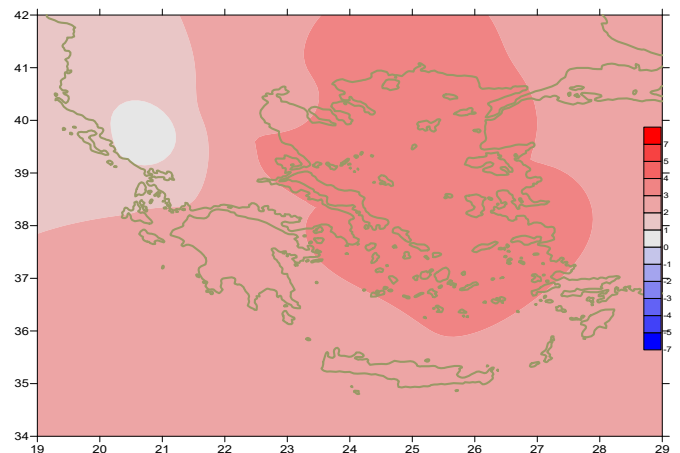
More specific (varied) :

Minimum:

from -4°C to 15°C over north mainland,
 from -1°C to 17°C over central mainland,
 from 6°C to 21°C over rest parts.

Maximum:

from 9°C to 24°C over north mainland,
 from 9°C to 26°C over central mainland,
 from 13°C to 25°C over rest parts.



Deviation of maximum temperature from normal values

Third 10-day period

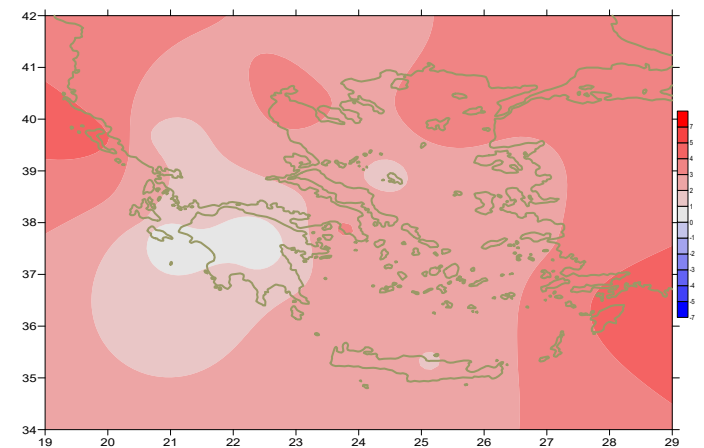
More specific (varied) :

Minimum:

from -10°C to 15°C over north mainland,
 from -3°C to 13°C over central mainland,
 from 3°C to 20°C over rest parts.

Maximum:

from 5°C to 19°C over north mainland,
 from 8°C to 25°C over central mainland,
 from 10°C to 23°C over rest parts.



Deviation of minimum temperature from normal values



Precipitation

First 10-day period

Locally significant amounts of precipitation.
More specific:

29mm in Kerkira, 20mm in Argostoli (1/11),
28mm in Kerkira, 29mm in Othoni, 24mm in Antirio, 13mm in Tripoli (2/11),
46mm in Alexandroupoli, 24mm in Ormenio, 15mm in Doxato, 13mm in Serres,
19mm in Edessa, 36mm in Polikastro, 27mm in Kastoria,
33mm in Ioannina, 44mm in Konitsa (4/11),
16mm in Antirio, 24mm in Leonidio (9/11),
20mm in Kerkira, 14mm in Zakynthos, 13mm in Argos, 13mm in Kithnos (10/11).

Second 10-day period

Locally significant amounts of precipitation.
More specific:

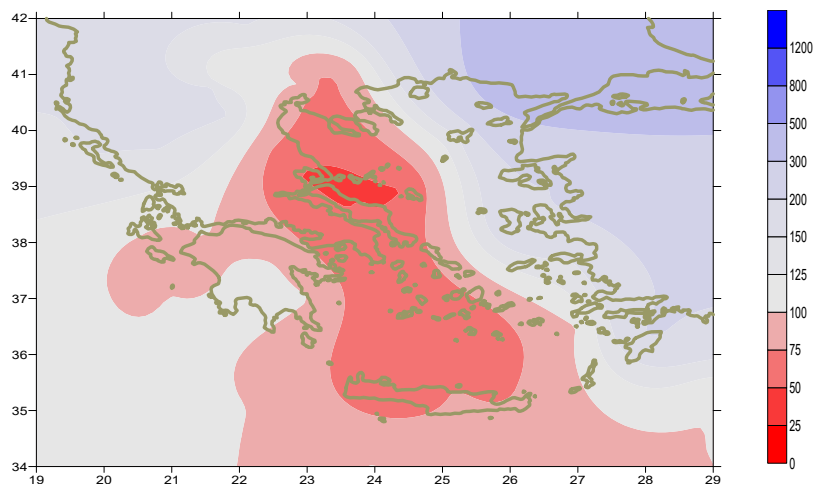
14mm in Kastoria, 28mm in Ioannina, 30mm in Konitsa, 14mm in Kozani,
19mm in Kalamata, 15mm in Antirio, 20mm in Krakea (11/11),
23mm in Preveza, 18mm in Zakynthos, 24mm in Adravida, 18mm in Araxos,
32mm in Kalamata, 13mm in Mikonos, 12mm in Astopalea, 30mm in Santorini,
16mm in Chios, 34mm in Ikaria, 46mm in Kitilini, 16mm in Kos (13/11),
24mm in Alexandroupoli, 27mm in Limnos, 13mm in Leros (18/11),
32mm in Heraklion, 11mm in Sitia (19/11).

Third 10-day period

Locally significant amounts of precipitation.

More specific:

66mm in Kerkira, 25mm in Zakynthos, 24mm in Alexandroupoli,
23mm in Karistos, 17mm in Chios, 30mm in Ikaria, 26mm in Kos,
128mm in Rodos (22/11),
58mm in Alexandroupoli, 35mm in Chios, 33mm in Limnos (23/11),
40mm in Argostoli (24/11),
32mm in Kalamata, 21mm in Siros, 28mm in Ikaria, 30mm in Rodos (25/11),
22mm in Othonoi, 19mm in Mitilini (26/11),
40mm in Kerkira, 36mm in Ioannina, 49mm in Araxos, 25mm in Antorio,
30mm in Tripoli, 16mm in Karistos, 15mm in Tithorea,
21mm in Mitilini (28/11), 15mm in Siros (29/11).



*Deviation of monthly precipitation height
from normal values (%)*

TABLE OF MEAN VALUES

STATION	Longitude	Lattitude	Tmean	TX	TN	RR	INST
SERRES	23,53	41,07	12	17,5	7,1	43	147
FLORINA	21,40	40,78					
KASTORIA	21,27	40,45	9,8	15,8	4,6	112	136
TRIKALA_IMATHIAS	22,55	40,60					
THESSALONIKI	22,97	40,52	14,5	18,2	10,5	27	150
CHRYSOUPOLI	24,62	40,92	13,5	18,7	9,1	45	141
ALEXANDROUPOLI	25,95	40,85	14,9	18,6	11	247	131
KOZANI	21,83	40,28	10,2	15,6	5,6	81	
KERKYRA	19,92	39,62	16,6	20,2	13	247	126
IOANNINA	20,82	39,70	11,1	15,8	6,6	233	100
PREVEZA	20,76	38,91	16,7	20,2	13,5	141	
TRIKALA_THESSALIAS	21,77	39,52					
LARISA	22,45	39,65	12,8	19,3	7,4	42	144
LIMNOS	25,23	39,92	16,4	19,7	13,2	78	144
ARTA	21,00	39,17					
AGHIALOS	22,78	39,21	14,8	20,6	9,9	20	182
MYTILINI	26,60	39,05	17,7	20,7	14,8	163	139
VELO	22,77	37,97					
AGRINIO	21,35	38,60					
LAMIA	22,43	38,87					
ANDRAVIDA	21,28	37,92	16,3	21,2	13	112	146
SKYROS	24,48	38,96	17,7	21,3	14,2	25	164
ARGOSTOLI	20,50	38,12	18,1	21,1	15,2	143	170
ARAXOS	21,42	38,15	16,2	21,4	11,8	128	170
TANAGRA	23,57	38,33	15,6	21,2	10,5	23	169
HIOS	26,13	38,35	17,6	21,1	14	151	147
PYRGOS	21,42	37,67					
TRIPOLI	22,40	37,52	12,4	17,9	6,9	120	165
TATOI	23,78	38,10	15,4	20,7	10,6	24	
HELLINIKO	23,73	37,90	18,7	22,8	15,5	28	167
ELEYSINA	23,55	38,07	17,7	22,2	13,5	24	
ZAKYNTHOS	20,88	37,75	17,3	21,9	13,2	114	186
SAMOS	26,92	37,68	18,4	21,9	15,1		
ARGOS	22,75	37,63					
KALAMATA	22,02	37,07	16,5	22,7	11,4	148	180
NAXOS	25,37	37,10					
METHONI	21,70	36,82					
MHLOS	24,43	36,73					
SPATA	23,95	37,95	17,6	21,9	12,1	29	
KOS	27,08	36,80	19	21,8	16,9	74	
KYTHIRA	22,98	36,15					
SANTORINI	25,41	36,41					
SOUDA	24,12	35,55	18,8	22,5	15,6	28	178
RODOS	28,08	36,40	20,1	22,8	17,8	183	188
MYKONOS	25,35	37,43	18,6	20,8	17,3	43	
HRAKLEIO	25,18	35,33	19,8	23,5	16,6	43	209
IERAPETRA	25,73	35,02					
SITEIA	26,10	35,21					
RETHYMNO	24,50	35,36					
TYMPAKI	24,76	35,06					
KASTELI	25,33	35,18	17,4	21,5	13,4	17	181
KARPATOS	27,15	35,42	20,8	23,3	18,8	32	
PAROS	25,13	37,02	18,9	21,8	16,2	18	165
SYROS	24,95	37,42	19,3	21,7	16,9	55	175
IKARIA	26,35	37,68					

11,314,58,13617810,214,16,45611,314,57,89612510,713,7820210,5165,88616112,715,410,232137

**TABLE OF DEVIATIONS
FROM NORMAL VALUES**

STATION	TMEAN (deviation) (I)	PRECI (deviation %) (II)
SERRES	2,4	80
FLORINA		
THESSALONIKI	3,1	47
ALEXANDROUPOLI	3,4	326
KOZANI	2,2	135
KERKYRA	2,4	137
IOANNINA	1,5	142
LARISA	2	72
LIMNOS	3,6	103
AGHIALOS	2,2	32
MYTILINI	2,7	174
AGRINIO		
SKYROS	2,5	47
ARGOSTOLI	1,9	89
ARAXOS	1,6	97
HIOS	3,3	182
HELLINIKO	2,7	55
ZAKYNTHOS	1,5	72
SAMOS	3,4	-
KALAMATA	1,8	104
NAXOS		
METHONI		
SANTORINI		
SOUDA	2,7	39
RODOS	3,2	207
HERAKLIO	2,7	73
SITIA		

(I) deviation of mean temperature from normal values
 (II) deviation of monthly precipitation height from normal values %.

Climatic Bulletin

General Description

Precipitation amounts were higher enough than normal values mainly over west parts of Greece and over east Aegean and Dodecanese as well.
The mean temperature varied higher enough than normal values mainly over east and south parts.

Climatic Parameters :

- ❖ **Normal Values** : normal values for various parameters (temperature, precipitation, etc) are defined as mean values calculated for 30 years. These normal values are used as basis and represent the mean situation. They can be specified in 10 daily, monthly, seasonally and yearly level and are used for the trend comparison of 10 days, month, season or year as: rainy decameron, mild winter, cool August etc.

Measurement :

- ❖ **Precipitation**
1 mm = 1 litre/m²

Table Legend :

Tmean : Mean Temperature
TN : Minimum Temperature
TX : Maximum Temperature
RR : Precipitation height(mm)
INST : Sun Duration (hours)

UTC hours (Universal Time Coordinates) in Greece :

- ❖ Winter : UTC hour = local hour - 2
- ❖ Summer : UTC hour = local hour - 3

© Hellenic National Meteorological Service
Reproduction is prohibited without written authorization
14 El.Venizelou 16777
Helliniko, Athens
Greece