




Climatic Bulletin

February 2024

 **Max
temperature**

 **Min
temperature**

 **Mean
temperature**

 **Precipitation**

 **Sunshine
duration**

February recorded as a warm month over the whole Greece since the temperature values were higher enough than normal levels.
In contrast the precipitation amounts were lower than the normal values almost everywhere.



Temperature

First 10-day period

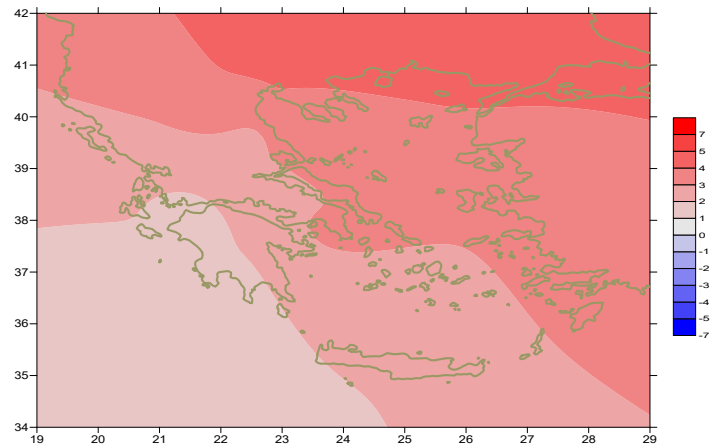
More specific (varied) :

Minimum:

from -10°C to 11°C over north mainland,
 from -7°C to 11°C over central mainland,
 from 0°C to 14°C over rest parts.

Maximum:

from 8°C to 23°C over north mainland,
 from 11°C to 24°C over central mainland,
 from 11°C to 20°C over rest parts.



Deviation of mean temperature from normal values

Second 10-day period

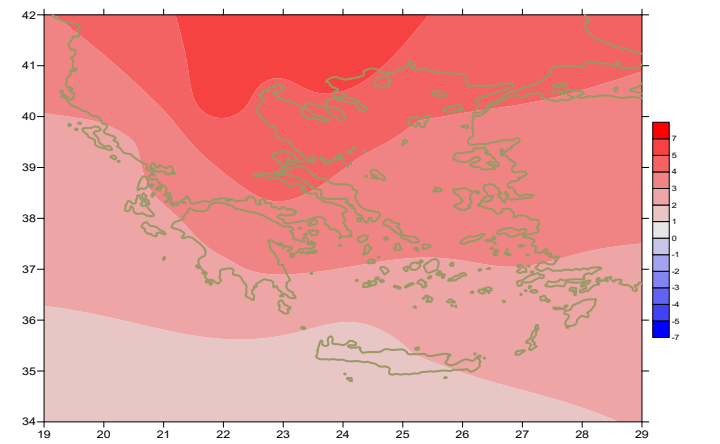
More specific (varied) :

Minimum:

from -5°C to 15°C over north mainland,
 from -3°C to 14°C over central mainland,
 from -1°C to 16°C over rest parts.

Maximum:

from 11°C to 20°C over north mainland,
 from 12°C to 21°C over central mainland,
 from 12°C to 19°C over rest parts.



Deviation of maximum temperature from normal values

Third 10-day period

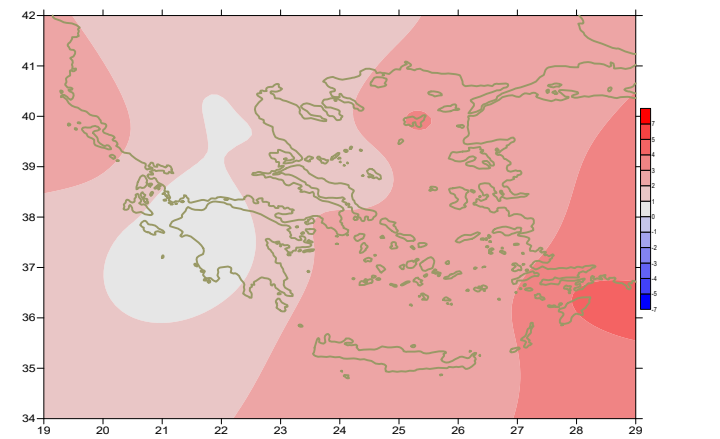
More specific (varied) :

Minimum:

from -4°C to 13°C over north mainland,
 from 2°C to 16°C over central mainland,
 from 4°C to 16°C over rest parts.

Maximum:

from 11°C to 20°C over north mainland,
 from 11°C to 22°C over central mainland,
 from 13°C to 21°C over rest parts.



Deviation of minimum temperature from normal values



Precipitation

First 10-day period

Lack of precipitation in general.

More specific:

2mm στην Χίο (8/2), 4mm στην Αστυπάλαια, 2mm στην Κω (9/2).

Second 10-day period

Locally significant amounts of precipitation.

More specific:

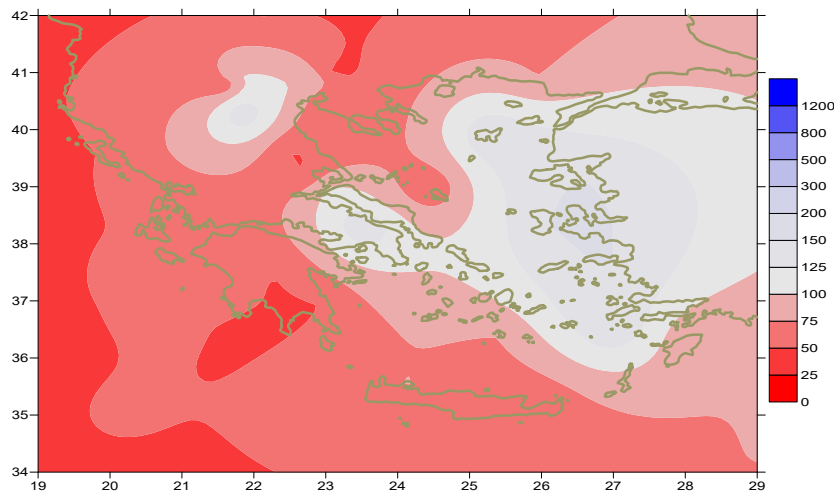
42mm in Konitsa, 16mm in Kerkira (11 /2),
33mm in Alexandroupoli, 12mm in Soufli, 15mm in Doxato, 17mm in Kastoria,
18mm in Kozani, 21mm in Preveza, 31mm in Ioannina, 26mm in Konitsa,
19mm in Kerkira, 15mm in Adravidia, 17mm in Antorio, 34mm in Paros,
32mm in Chios, 25mm in Limnos, 44mm in Mitilini, 27mm in Kos (12/2),
16mm in Araxos, 48mm in Mitilini, 14mm in Rodos (13/2),
15mm in Tanagra, 12mm in Heraklion, 20mm in Kasteli, 19mm in Tatoi (15/2),
34mm in Souda, 15mm in Kasteli ,17mm in Rodos (16/2),
12mm in Othonoi (20/2).

Third 10-day period

Locally significant amounts of precipitation.

More specific:

20mm in Argostoli, 10mm in Kalamata (21/2),
26mm in Zakynthos (22/2),
22mm in Kalamata, 16mm in Mesologgi, 25mm in Lamia, 17mm in Tithorea,
20mm in Oreoi, 36mm in Tanagra ,11mm in Karistos, 12mm in Skiros,
19mm in Tripoli, 43mm in Argos, 15mm in Mikonos, 19mm in Paros,
13mm in Santorini, 13mm in Souda, 13mm in Paleochora, 16mm in Kasteli,
27mm in Kos, 14mm in Rodos, 31mm in Spata, 26mm in Elefsina,
24mm in Kotroni, 26mm in Shinias, 11mm in Lavrio (26/2),
21mm in Rodos (27/2).



**Deviation of monthly precipitation height
from normal values (%)**

TABLE OF MEAN VALUES

STATION	Longitude	Lattitude	Tmean	TX	TN	RR	INST
SERRES	23,53	41,07	11,1	17,9	3,6	6	145
FLORINA	21,40	40,78					
KASTORIA	21,27	40,45	7,9	14,5	1,3	32	144
TRIKALA_IMATHIAS	22,55	40,60					
THESSALONIKI	22,97	40,52	11,2	16,1	5,7	19	168
CHRYSOUPOLI	24,62	40,92	10,1	15,7	4,5	17	158
ALEXANDROUPOLI	25,95	40,85	10,7	14,4	6	42	128
KOZANI	21,83	40,28	8,1	14,1	2,7	34	
KERKYRA	19,92	39,62	13	17	8,8	50	143
IOANNINA	20,82	39,70	8,9	15	1,5	73	142
PREVEZA	20,76	38,91	13,2	17,2	9,3	38	
TRIKALA_THESSALIAS	21,77	39,52					
LARISA	22,45	39,65	10	16,9	2,9	17	155
LIMNOS	25,23	39,92	12	15,3	8,8	54	164
ARTA	21,00	39,17					
AGHIALOS	22,78	39,21	11,1	17,2	5,3	13	166
MYTILINI	26,60	39,05	13,2	16,3	10,1	60	174
VELO	22,77	37,97					
AGRINIO	21,35	38,60					
LAMIA	22,43	38,87					
ANDRAVIDA	21,28	37,92	11,8	17,2	6,7	47	190
SKYROS	24,48	38,96	13,6	16,4	10,8	20	156
ARGOSTOLI	20,50	38,12	13,9	17,1	10,5	59	167
ARAXOS	21,42	38,15	12,1	17,4	6,5	45	172
TANAGRA	23,57	38,33	11,2	16,5	6,1	60	
HIOS	26,13	38,35	12,9	16,2	9,3	117	180
PYRGOS	21,42	37,67					
TRIPOLI	22,40	37,52	7,9	14	1,7	34	143
TATOI	23,78	38,10	10,9	15,7	6,4	61	
HELLINIKO	23,73	37,90	13,8	17,7	10,8		162
ELEYSINA	23,55	38,07	13,1	17,3	9	29	
ZAKYNTHOS	20,88	37,75	12,6	17,1	7,7	72	178
SAMOS	26,92	37,68	13,2	16,6	9,7		
ARGOS	22,75	37,63					
KALAMATA	22,02	37,07	12,1	18,4	6,3	36	154
NAXOS	25,37	37,10					
METHONI	21,70	36,82					
MHLOS	24,43	36,73					
SPATA	23,95	37,95	12,7	16,6	8	42	0
KOS	27,08	36,80	14,3	17	12,3	69	
KYTHIRA	22,98	36,15					
SANTORINI	25,41	36,41					
SOUDA	24,12	35,55	13,3	16,5	10,2	63	155
RODOS	28,08	36,40	15,4	17,7	12,7	66	223
MYKONOS	25,35	37,43	13,7	15,7	12,4	26	
HRAKLEIO	25,18	35,33	14,4	17,5	11,1	26	177
IERAPETRA	25,73	35,02					
SITEIA	26,10	35,21					
RETHYMNO	24,50	35,36					
TYMPAKI	24,76	35,06					
KASTELI	25,33	35,18	11,5	15,5	7,8	71	155
KARPATOS	27,15	35,42	15,6	17,8	13,5	7	
PAROS	25,13	37,02	14	16,6	11,4	60	176
SYROS	24,95	37,42	14,2	16,7	12,1	23	173
IKARIA	26,35	37,68					

11,314,58,13617810,214,16,45611,314,57,89612510,713,7820210,5165,88616112,715,410,232137

**TABLE OF DEVIATIONS
FROM NORMAL VALUES**

STATION	TMEAN (deviation) (I)	PRECI (deviation %) (II)
SERRES	4,2	14
FLORINA		
THESSALONIKI	4	47
ALEXANDROUPOLI	4,4	69
KOZANI	3,8	108
KERKYRA	2,7	37
IOANNINA	2,8	63
LARISA	2,8	49
LIMNOS	3,8	122
AGHIALOS	3	26
MYTILINI	3,4	62
AGRINIO		
SKYROS	3,4	32
ARGOSTOLI	2,2	52
ARAXOS	1,6	53
HIOS	3,1	140
HELLINIKO	3,3	-
ZAKYNTHOS	1,1	64
SAMOS	3,2	-
KALAMATA	1,4	35
NAXOS		
METHONI		
SANTORINI		
SOUDA	2,2	56
RODOS	3,4	56
HERAKLIO	2,2	34
SITIA		

(I) deviation of mean temperature from normal values
 (II) deviation of monthly precipitation height from normal values %.

Climatic Bulletin

General Description

Precipitation amounts were lower enough than normal values over most parts, with the exception of eastern Aegean area. The mean temperature varied higher enough than normal values everywhere.

Climatic Parameters :

- ❖ **Normal Values** : normal values for various parameters (temperature, precipitation, etc) are defined as mean values calculated for 30 years. These normal values are used as basis and represent the mean situation. They can be specified in 10 daily, monthly, seasonally and yearly level and are used for the trend comparison of 10 days, month, season or year as: rainy decameron, mild winter, cool August etc.

Measurement :

- ❖ **Precipitation**
1 mm = 1 litre/m²

Table Legend :

Tmean : Mean Temperature
 TN : Minimum Temperature
 TX : Maximum Temperature
 RR : Precipitation height(mm)
 INST : Sun Duration (hours)

UTC hours (Universal Time Coordinates) in Greece :

- ❖ Winter : UTC hour = local hour - 2
- ❖ Summer : UTC hour = local hour - 3

© Hellenic National Meteorological Service
 Reproduction is prohibited without written authorization
 14 El.Venizelou 16777
 Helliniko, Athens
 Greece