




Climatic Bulletin

July 2010

 Max
temperature

 Min
temperature

 Mean
temperature

 Precipitation

 Sunshine
duration



July characterized by unstable conditions which had as a result strong thunderstorms and hail locally over mainland at the beginning and the end of month . In parallel, short periods of very high temperatures recorded in the middle and mainly during last days. Meanwhile, the gale force northern winds had a very short appearance .



ΕΘΝΙΚΗ
ΜΕΤΕΩΡΟΛΟΓΙΚΗ
ΥΠΗΡΕΣΙΑ

HELLENIC NATIONAL METEOROLOGICAL SERVICE



Temperature

First Decameron

Minimum: The values were relatively low over mainland for the first three days.

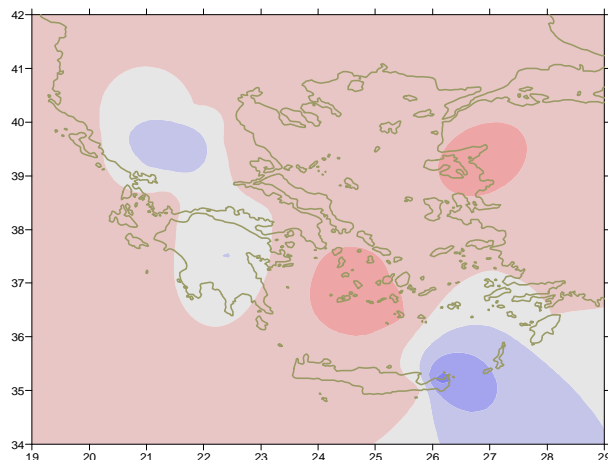
Some of the lowest:

14.6°C in *Kastoria* and 15°C in *Ioannina* at 3/7.

Maximum: High values recorded in the middle of the period.

More specific:

36.2°C in *N.Filadelfia*, 36.6°C in *Leonidio* at 5/7.



Deviation of mean temperature from normal values

Second Decameron

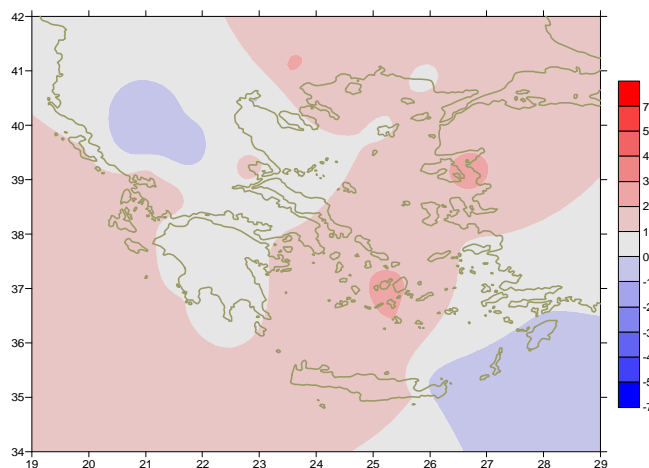
Minimum: The values increased in the middle of the period.

E.g: 27°C in *Samos*, 26°C in *Mikonos* and *Astros* at 15/7.

Maximum: High values mainly at 15/7 everywhere.

More specific:

37.8°C in *N.Filadelfia*, 38.6°C in *Agrinio*, 38.2°C in *Serres* at 15/7.



Deviation of maximum temperature from normal values

Third Decameron

Minimum: The values decreased only over Northwestern parts but high at the rest.

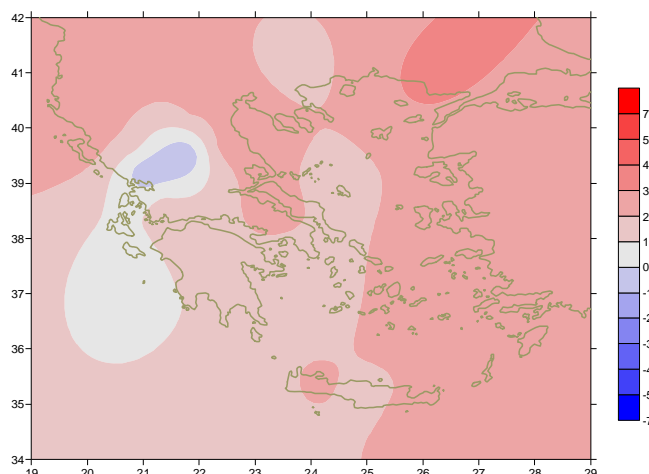
More specific:

28.4°C in *Ierapetra* and 27.4°C in *Hellinikon* at 25/7.

Maximum: high mainly at 24/7 which decreased since 26/7.

For example:

40°C in *Larisa* and 39.4°C in *N.Filadelfia* at 21/7.



Deviation of minimum temperature from normal values



Precipitation

First Decameron

Relatively high precipitation recorded in the middle of the

Period. More specific:

35mm in Limnos ,

27mm in Chissoupoli(Kavala), 21mm in Alexandroupoli at 7/7.

Second Decameron

Remarkable rainfalls and local thunderstorms recorded mainly over mainland.

More specific:

28mm in Ioannina (11/7),

21mm in Konitsa (17/7).

Third Decameron

Rainy period between 26-27/7.

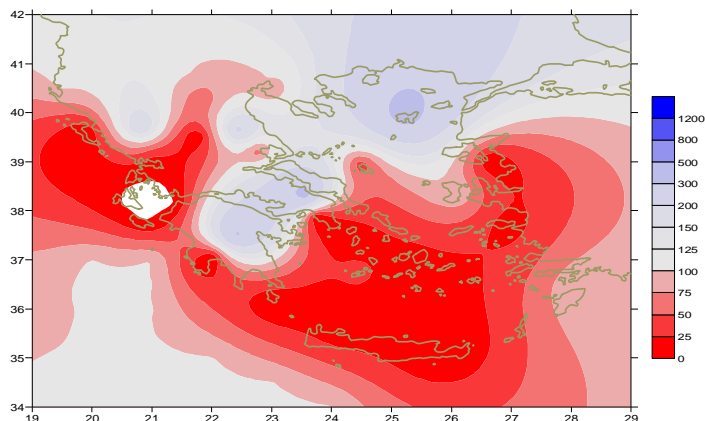
More specific:

13m in Tripoli at 21/7,

29mm in Larisa ,

26mm in Lamia,

11mm in Thessaloniki at 26/7.



Deviation of monthly precipitation height from normal values (%)

TABLE OF MEAN VALUES

STATION	Longitude	Latitude	Tmean	TX	TN	RR	INST
SERRES	23,53	41,07	27,9	34,1	19,6	42	300
FLORINA	21,40	40,78					
KASTORIA	21,27	40,45	23,5	29,1	14,9	57	303
TRIKALA_IMATHIAS	22,55	40,60	27,6	32,9	19,5	32	343
THESSALONIKI	22,97	40,52	27,5	31,3	21,3	18	353
CHRYSOUPOLI	24,62	40,92	26,6	30,3	20,7	50	299
ALEXANDROUPOLI	25,95	40,85	27,1	31	20,7	46	340
KOZANI	21,83	40,28	25	29,5	17,6	21	
KERKYRA	19,92	39,62	28	31,9	21	0	397
IOANNINA	20,82	39,70	24,5	30,1	16,3	56	322
PREVEZA	20,76	38,91	26,4	30,3	21,3	0	
TRIKALA_THESSALIAS	21,77	39,52	26,5	32,4	18,3	0	
LARISA	22,45	39,65	28,4	33,8	20,1	45	339
LIMNOS	25,23	39,92	26,9	29,9	22,2	36	351
ARTA	21,00	39,17	26,5	32,9	18,7	6	371
AGHIALOS	22,78	39,21	28,3	32,2	20,7	10	349
MYTILINI	26,60	39,05	28,8	32,7	23,7	0	413
VELO	22,77	37,97	29,5	33,3	21,2	2	366
AGRINIO	21,35	38,60	28,3	34,9	18,9	2	389
LAMIA	22,43	38,87	28,3	33,9	20,4	34	285
ANDRAVIDA	21,28	37,92	27,1	30,8	19,8	0	370
SKYROS	24,48	38,96	26,5	28,6	22,6	2	350
ARGOSTOLI	20,50	38,12	27,1	30,4	21,5	0	403
ARAXOS	21,42	38,15	27,7	31,7	20,3	0	371
TANAGRA	23,57	38,33	28,4	32,3	20,6	24	374
HIOS	26,13	38,35	28,1	30,9	23,9	0	375
PYRGOS	21,42	37,67	27,3	30,8	18,9	0	334
TRIPOLI	22,40	37,52	24,4	30,3	15,9	60	314
TATOI	23,78	38,10	27,5	31,2	21,4	30	
HELLINIKO	23,73	37,90	29,5	33,5	24,1	0	373
ELEYSINA	23,55	38,07	30	33,7	24,2	0	
ZAKYNTHOS	20,88	37,75	28,4	32,1	20,7	0	400
SAMOS	26,92	37,68	29,6	33,3	24,8	0	407
ARGOS	22,75	37,63					
KALAMATA	22,02	37,07	27,1	31,3	19,4	0	363
NAXOS	25,37	37,10	26,6	28,8	24,2	0	403
METHONI	21,70	36,82	25,8	28,7	21,7	0	379
MHLOS	24,43	36,73	27,7	29,7	23,1	0	
SPATA	23,95	37,95	27,2	31,7	21,8	3	
KOS	27,08	36,80	27	30,7	23,5	0	
KYTHIRA	22,98	36,15					
SANTORINI	25,41	36,41	27,6	30,3	24,7	0	388
SOUDA	24,12	35,55	27,8	31,6	22,8	0	384
RODOS	28,08	36,40	27,9	30,4	24,7	0	390
MYKONOS	25,35	37,43	26,3	28,5	23,7	0	
HERAKLEIO	25,18	35,33	27,4	30	23,3	0	390
IERAPETRA	25,73	35,02	29,2	32,8	25,2	0	375
SITEIA	26,10	35,21	26,3	28,1	24,4	0	396
RETHYMNO	24,50	35,36					
TYMPAKI	24,76	35,06	29,2	32,9	21,8	0	374
KASTELI	25,33	35,18	25,5	29,3	21,3	0	354
KARPATOS	27,15	35,42	26,6	29,4	24,3	0	
PAROS	25,13	37,02					
SYROS	24,95	37,42	27,6	30	23,9	0	387
IKARIA	26,35	37,68	26,4	28,1	25,1	0	

Climatic Bulletin

General Description

Precipitation amounts were higher than normal values over Northeastern and parts of central mainland but over Northern Aegean as well.

The mean temperature varied higher than normal values almost everywhere. The exception was southeastern Aegean and northwestern mainland.

Climatic Parameters :

- ❖ **Normal Values** : normal values for various parameters (temperature, precipitation, etc) are defined as mean values calculated for 30 years. These normal values are used as basis and represent the mean situation. They can be specified in 10 daily, monthly, seasonally and yearly level and are used for the trend comparison of 10 days, month, season or year as: rainy decameron, mild winter, cool August etc.

Measurement :

- ❖ **Precipitation**
1 mm = 1 litre/m²

Table Legend :

Tmean : Mean Temperature
 TN : Minimum Temperature
 TX : Maximum Temperature
 RR : Precipitation height(mm)
 INST : Sun Duration (hours)

UTC hours (Universal Time Coordinates) in Greece :

- ❖ Winter : UTC hour = local hour - 2
- ❖ Summer : UTC hour = local hour - 3

©Hellenic National Meteorological Service
 Reproduction is prohibited without written authorization
 14 El.Venizelou 16777
 Helliniko, Athens
 Greece