




# Climatic Bulletin

February 2011

 Max  
temperature

 Min  
temperature

 Mean  
temperature

 Precipitation

 Sunshine  
duration



February had every characteristic of a winter month.

Significant snowfalls recorded over Central and Southern parts while strong gale force north winds (9 locally 10 Beaufort) affected eastern parts.

Also strong rainfalls caused local floods over central mainland and Attica (18-19/2).

In parallel very strong south winds caused problems mainly over Aegean area for a few days.



ΕΘΝΙΚΗ  
ΜΕΤΕΩΡΟΛΟΓΙΚΗ  
ΥΠΗΡΕΣΙΑ

HELLENIC NATIONAL METEOROLOGICAL SERVICE



## Temperature

### First Decameron

**Minimum:** low (values below  $0^{\circ}\text{C}$ ) locally over mainland.

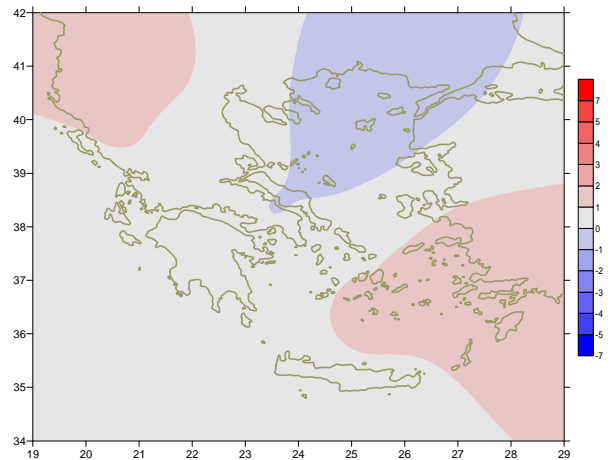
More specific:

$-10.4^{\circ}\text{C}$  in Florina and  $-6.6^{\circ}\text{C}$  in Alexandroupoli,  $-4.8^{\circ}\text{C}$  in Ioannina at 2/2 and  $-5.2^{\circ}\text{C}$  in Tripoli at 6/2.

**Maximum:** Relatively low values which increased from 7/2.

More specific:

$14.2^{\circ}\text{C}$  in Florina,  $17^{\circ}\text{C}$  in Kastoria at 8/2 while the highest values  $22^{\circ}\text{C}$  recorded in Arta and Agrinio at 8/2.



*Deviation of mean temperature from normal values*

### Second Decameron

**Minimum:** The values increased rapidly mainly at the end of period.

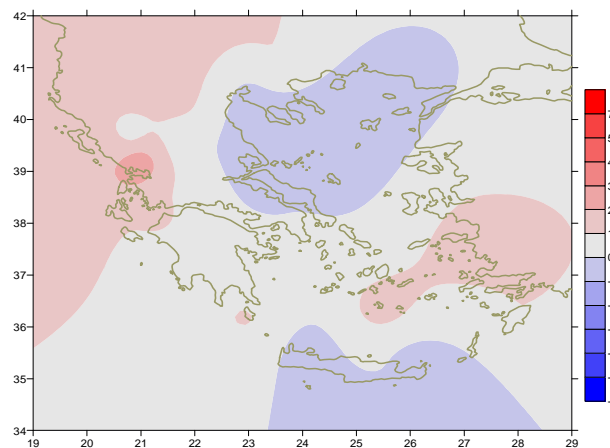
More specific:

$-6.6^{\circ}\text{C}$  in Kastoria at 11/2 but  $+3.8^{\circ}\text{C}$  in the same town at 20/2.

**Maximum:** relatively high values over most parts.

More specific:

$18^{\circ}\text{C}$  in Elefsina and Serres at 12/2,  $20^{\circ}\text{C}$  in Leonidio and Iraklion at 17/2.



*Deviation of maximum temperature from normal values*

### Third Decameron

**Minimum:** low values (slightly below  $0^{\circ}\text{C}$ ) over mainland.

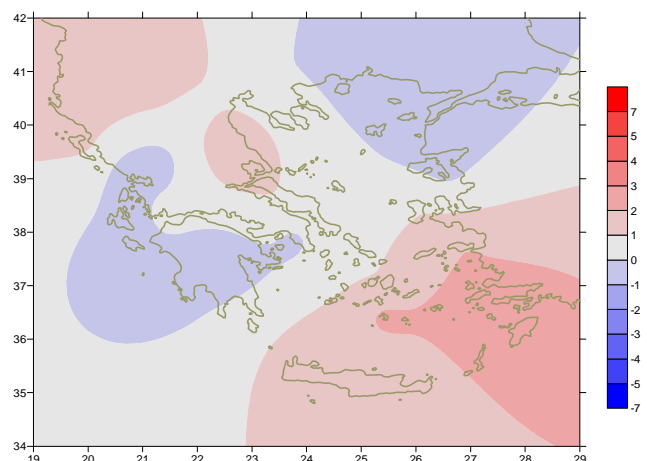
More specific:

The values varied between  $-1^{\circ}\text{C}$  and  $-2^{\circ}\text{C}$  in Florina from 22/2 to 28/2, while in Alexandroupoli the lowest value was  $-1^{\circ}\text{C}$  at 26/2 and  $-1.8^{\circ}\text{C}$  at 27/2.

**Maximum:** not exceeded  $10^{\circ}\text{C}$  over Northern mainland but reached  $16-20^{\circ}\text{C}$  over rest parts.

For example (the highest):

in Iraklion  $20^{\circ}\text{C}$  at 22/2,  $18.8^{\circ}\text{C}$  in Arta and  $17.6^{\circ}\text{C}$  in Rodos at 23/2.



*Deviation of minimum temperature from normal values*



## Precipitation

### First Decameron

High precipitation recorded

Over eastern Sterea-Evia, eastern Peloponnese and South Aegean.

More specific:

*50mm in Hellinikon at 3/2,*

*67mm in Syros and 99mm in Mikonos at 4/2.*

### Second Decameron

very strong rainfalls and thunderstorms recorded mainly over

South Aegean.

More specific:

*40mm in Iraklion at 16/2,*

*63mm in Chios at 19/2,*

*40mm in Naxos at 19/2, 33mm in Limnos at 19/2.*

### Third Decameron

Relatively high precipitation recorded over Central

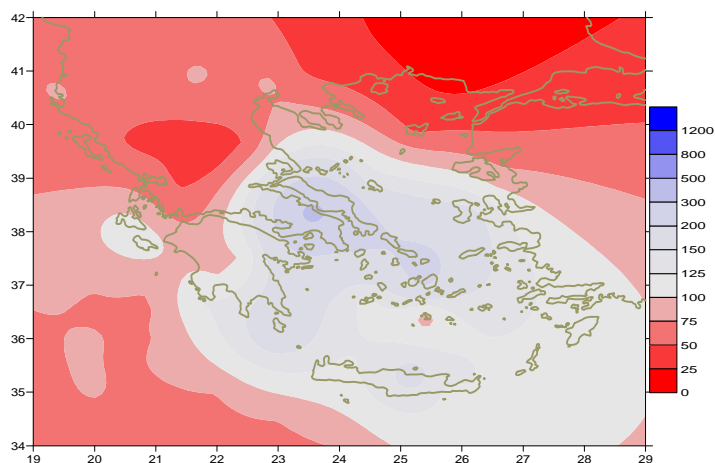
and South parts (mainly over islands where

significant snowfalls occurred). More specific:

*55mm in Samos at 23/2,*

*77mm in Leonidio at 24/2 and*

*41mm in Karpathos at 25/2.*



*Deviation of monthly precipitation height from normal values (%)*

## TABLE OF MEAN VALUES

STATION	Longitude	Latitude	Tmean	TX	TN	RR	INST
SERRES	23,53	41,07	6,5	11,6	1,6	18	93
FLORINA	21,40	40,78					
KASTORIA	21,27	40,45	5	9,3	0,1	23	106
TRIKALA_IMATHIAS	22,55	40,60	6,6	11,4	2,4	59	90
THESSALONIKI	22,97	40,52	7,1	10,6	3	30	115
CHRYSOUPOLI	24,62	40,92	6,2	9,6	3	45	113
ALEXANDROUPOLI	25,95	40,85	5	9,1	1	11	131
KOZANI	21,83	40,28	4,4	9,1	0	20	
KERKYRA	19,92	39,62	11,2	15,7	6,9	68	127
IOANNINA	20,82	39,70	7,4	12,4	1,6	52	102
PREVEZA	20,76	38,91	11,4	15,4	7,7	42	
TRIKALA_THESSALIAS	21,77	39,52					
LARISA	22,45	39,65	7,3	11,8	3,2	18	90
LIMNOS	25,23	39,92	7,3	10	4,6	20	130
ARTA	21,00	39,17	10	16,9	4,2	83	139
AGHIALOS	22,78	39,21	8,4	12	5	57	98
MYTILINI	26,60	39,05	10,2	13,3	6,8	80	146
VELO	22,77	37,97	10,1	13,9	5,9	136	113
AGRINIO	21,35	38,60	9,6	15,6	4,3	62	153
LAMIA	22,43	38,87	8,6	13,3	4,3	104	98
ANDRAVIDA	21,28	37,92	10,4	15,6	6	62	151
SKYROS	24,48	38,96	10	11,8	8	90	89
ARGOSTOLI	20,50	38,12	11,9	15,6	8,6	129	159
ARAXOS	21,42	38,15	10,9	15,4	6,7	64	162
TANAGRA	23,57	38,33	8,2	12,2	4,4	183	105
HIOS	26,13	38,35	10,4	13,4	7,4	134	150
PYRGOS	21,42	37,67	11,6	16,5	6,9	105	136
TRIPOLI	22,40	37,52	5,9	10,8	0,7	102	126
TATOI	23,78	38,10	8,8	12	5,5	164	
HELLINIKO	23,73	37,90	10,9	14,6	7,1	108	128
ELEYSINA	23,55	38,07	10,3	13,8	6,5	81	
ZAKYNTHOS	20,88	37,75	11,3	15,4	7,6	127	155
SAMOS	26,92	37,68	11,5	14,4	8,4	131	
ARGOS	22,75	37,63					
KALAMATA	22,02	37,07	10,8	16	5,6	104	153
NAXOS	25,37	37,10	13,1	15,1	10,4	130	114
METHONI	21,70	36,82	11,9	15,6	7,6	106	155
MHLOS	24,43	36,73					
SPATA	23,95	37,95	9,9	12	5,3	165	
KOS	27,08	36,80	12,1	14,6	10	136	
KYTHIRA	22,98	36,15					
SANTORINI	25,41	36,41	13,2	15,1	11,4	54	137
SOUDA	24,12	35,55	11,6	14,4	9,5	137	110
RODOS	28,08	36,40	13,8	16,2	11,2	135	177
MYKONOS	25,35	37,43	11,4	13,3	9,9	116	
HERAKLEIO	25,18	35,33	12,9	15,6	10,2	131	128
IERAPETRA	25,73	35,02					
SITEIA	26,10	35,21	13	14,7	10,9	95	135
RETHYMNO	24,50	35,36					
TYMPAKI	24,76	35,06	12,6	16,5	8,4	94	173
KASTELI	25,33	35,18	10,4	13,6	7	181	124
KARPATOS	27,15	35,42	14	16,3	12,5	95	
PAROS	25,13	37,02	12	14,7	9,9	115	139
SYROS	24,95	37,42	11,9	14	9,3	205	151
IKARIA	26,35	37,68	11,9	13,7	10,4	117	

# Climatic Bulletin

## General Description

Precipitation amounts were lower than normal values over most parts of Central and Northern mainland. In contrast they were quite higher over Aegean area, Creta and Peloponnese. The mean temperature varied close to normal values over most parts but slightly lower over Northeastern parts.

### Climatic Parameters :

- ❖ **Normal Values** : normal values for various parameters (temperature, precipitation, etc) are defined as mean values calculated for 30 years. These normal values are used as basis and represent the mean situation. They can be specified in 10 daily, monthly, seasonally and yearly level and are used for the trend comparison of 10 days, month, season or year as: rainy decameron, mild winter, cool August etc.

### Measurement :

- ❖ **Precipitation**  
1 mm = 1 litre/m<sup>2</sup>

### Table Legend :

Tmean : Mean Temperature  
 TN : Minimum Temperature  
 TX : Maximum Temperature  
 RR : Precipitation height(mm)  
 INST : Sun Duration (hours)

### UTC hours (Universal Time Coordinates) in Greece :

- ❖ Winter : UTC hour = local hour - 2
- ❖ Summer : UTC hour = local hour - 3

© Hellenic National Meteorological Service  
 Reproduction is prohibited without written authorization  
 14 El.Venizelou 16777  
 Helliniko, Athens  
 Greece